

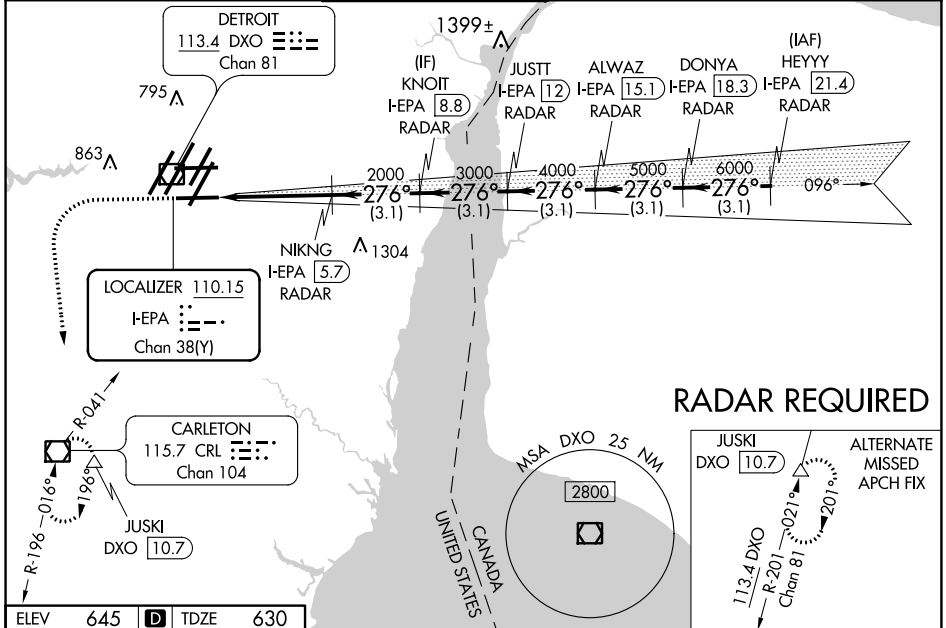
LOC/DME I-EPA 110.15	APP CRS 276°	Rwy Ldg TDZE 8500 630	Apt Elev 645
Chan 38(Y)			

ILS or LOC RWY 27L

DETROIT METRO WAYNE COUNTY (DTW)

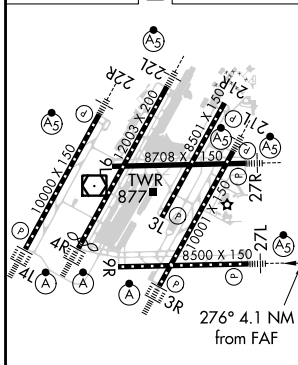
<p>▼ DME or RADAR required. Simultaneous approach authorized. **RVR 1800 authorized with use of FD or AP or HUD to DA.</p>	<p>MALS R</p>	<p>MISSED APPROACH: Climb to 1100 then climbing left turn to 4000 on heading 180° and CRL VOR/DME R-041 to CRL VOR/DME and hold, continue climb-in-hold to 4000.</p>

D-ATIS 133.675	DETROIT APP CON 124.05 284.0	METRO TOWER 128.75 317.725	GND CON 121.8 (NW) 119.45 (NE) 132.725 (SW) 119.25 (SE)	CLNC DEL 120.65	CPDLC
--------------------------	--	--------------------------------------	---	---------------------------	-------



RADAR REQUIRED

ELEV 645	D	TDZE 630
----------	----------	----------



TDZ/CL Rws 3R, 4L, 4R and 22R
REIL Rws 3L, 9L, 9R and 21R
HIRL all runways

FAF to MAP 4.1 NM

Knots	60	90	120	150	180
Min:Sec	4:06	2:44	2:03	1:38	1:22

1100	4000	CRL R-041	CRL	VGSI and ILS glidepath not coincident (VGSI Angle 3.00/TCH 71).																				
* LOC only.																								
<table border="1"> <tr> <td>1.2 NM</td> <td>2.9 NM</td> <td>3.1 NM</td> <td>3.1 NM</td> <td>3.1 NM</td> <td>3.1 NM</td> <td>3.1 NM</td> </tr> </table>					1.2 NM	2.9 NM	3.1 NM	3.1 NM	3.1 NM	3.1 NM	3.1 NM													
1.2 NM	2.9 NM	3.1 NM	3.1 NM	3.1 NM	3.1 NM	3.1 NM																		
HEYYY I-EPA 21.4 RADAR	DONYA I-EPA 18.3 RADAR	ALWAZ I-EPA 15.1 RADAR	JUST I-EPA 12 RADAR	KNOIT I-EPA 8.8 RADAR	NIKNG I-EPA 5.7 RADAR	NIKNG I-EPA 2.8 RADAR																		
* I-EPA 1.6		* I-EPA 2.8		* I-EPA 1.6		* I-EPA 1.6																		
<table border="1"> <tr> <th>CATEGORY</th> <th>A</th> <th>B</th> <th>C</th> <th>D</th> </tr> <tr> <td>S-ILS 27L **</td> <td colspan="4">830/24 200 (200-1/2)</td> </tr> <tr> <td>S-LOC 27L</td> <td>1080/24</td> <td>450 (500-1/2)</td> <td>1080/45</td> <td>450 (500-2/3)</td> </tr> <tr> <td>C CIRCLING</td> <td>1180-1</td> <td>535 (600-1)</td> <td>1180-1 1/2 535 (600-1 1/2)</td> <td>1240-2 595 (600-2)</td> </tr> </table>					CATEGORY	A	B	C	D	S-ILS 27L **	830/24 200 (200-1/2)				S-LOC 27L	1080/24	450 (500-1/2)	1080/45	450 (500-2/3)	C CIRCLING	1180-1	535 (600-1)	1180-1 1/2 535 (600-1 1/2)	1240-2 595 (600-2)
CATEGORY	A	B	C	D																				
S-ILS 27L **	830/24 200 (200-1/2)																							
S-LOC 27L	1080/24	450 (500-1/2)	1080/45	450 (500-2/3)																				
C CIRCLING	1180-1	535 (600-1)	1180-1 1/2 535 (600-1 1/2)	1240-2 595 (600-2)																				
GS 3.00° TCH 56																								

EC-1, 02 DEC 2021 to 30 DEC 2021

EC-1, 02 DEC 2021 to 30 DEC 2021