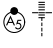


LOC I-DMI 108.5	APP CRS 276°	Rwy ldg TDZE Apt Elev	8708 635 645
---------------------------	------------------------	-----------------------------	---

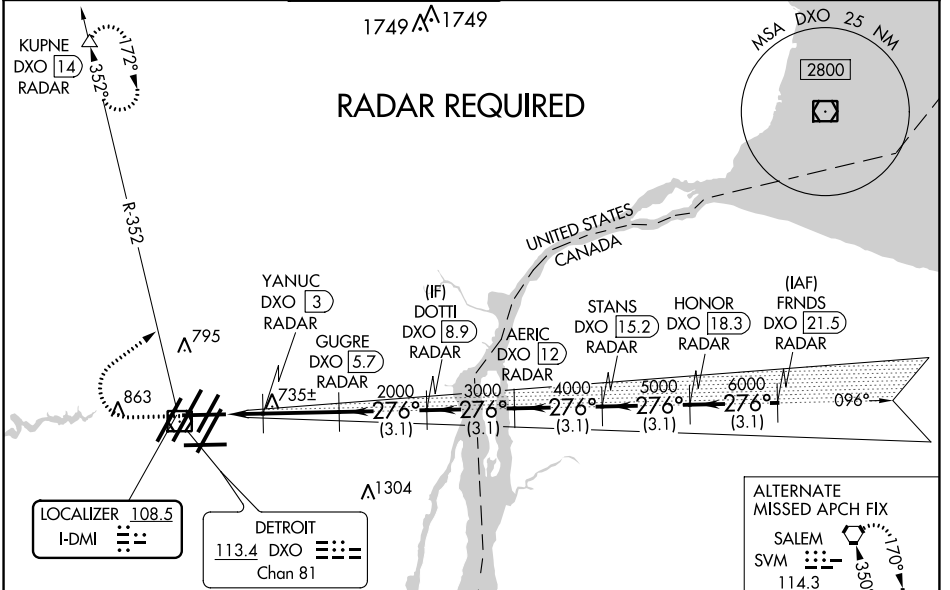
ILS or LOC RWY 27R

DETROIT METRO WAYNE COUNTY (DTW)

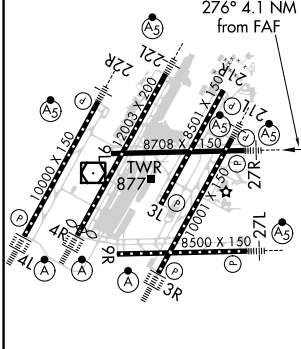
▽ DME or RADAR required. Simultaneous approach authorized. DME from DXO VOR/DME. Simultaneous reception of I-DMI and DXO DME required. For inop ALS, increase S-LOC 27R Cats C and D visibility to RVR 5500.
 ** RVR 1800 authorized with use of FD or AP or HUD to DA.

MALS

MISSED APPROACH: Climb to 1100 then climbing right turn to 4000 on DXO VOR/DME R-352 to KUPNE/DXO 14 DME/RADAR and hold, continue climb-in-hold to 4000.

D-ATIS 133.675	DETROIT APP CON 125.15 284.0	METRO TOWER 118.4 317.725	GND CON 121.8 (NW) 119.45 (NE) 132.725 (SW) 119.25 (SE)	CLNC DEL 120.65	CPDLC
--------------------------	--	-------------------------------------	---	---------------------------	-------



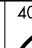
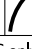
ELEV 645	D	TDZE 635
----------	----------	----------



TDZ/CL Rwy 3R, 4L, 4R and 22R
 REIL Rwy 3L, 9L, 9R and 21R
 HIRL all runways

FAF to MAP 4.1 NM

Knots	60	90	120	150	180
Min:Sec	4:06	2:44	2:03	1:38	1:22

1100	4000	KUPNE	VGSI and ILS glidepath not coincident (VGSI Angle 3.00/TCH 61).
		DXO R-352	Δ
*LOC only.			
DXO 1.6 RADAR	YANUC DXO 3 RADAR	GUGRE DXO 5.7 RADAR	DOTLI DXO 8.9 RADAR
AERIC DXO 12 RADAR	STANS DXO 15.2 RADAR	HONOR DXO 18.3 RADAR	FRNDS DXO 21.5 RADAR
276° 7000	2000	3000	4000
5000	6000	7000	7000
GS 3.00°	TCH 50		
1.4 NM - 2.7 NM - 3.1 NM - 3.1 NM - 3.1 NM - 3.1 NM - 3.1 NM			

CATEGORY	A	B	C	D
S-ILS 27R	** 835/24 200 (200-½)			
S-LOC 27R	1000/24	365 (400-½)	1000/35	365 (400-¾)
C CIRCLING	1180-1	535 (600-1)	1180-1½ 535 (600-½)	1240-2 595 (600-2)

EC-1, 02 DEC 2021 to 30 DEC 2021

EC-1, 02 DEC 2021 to 30 DEC 2021