

DETROIT, MICHIGAN

AL-119 (FAA)

ILS PRM RWY 4R (SA CAT I) (CLOSE PARALLEL)

21168

LOC/DME I-DTW 110.7 Chan 44	APP CRS 036°	Rwy Idg 11494
		TDZE 640
		Apt Elev 645

DETROIT METRO WAYNE COUNTY (DTW)

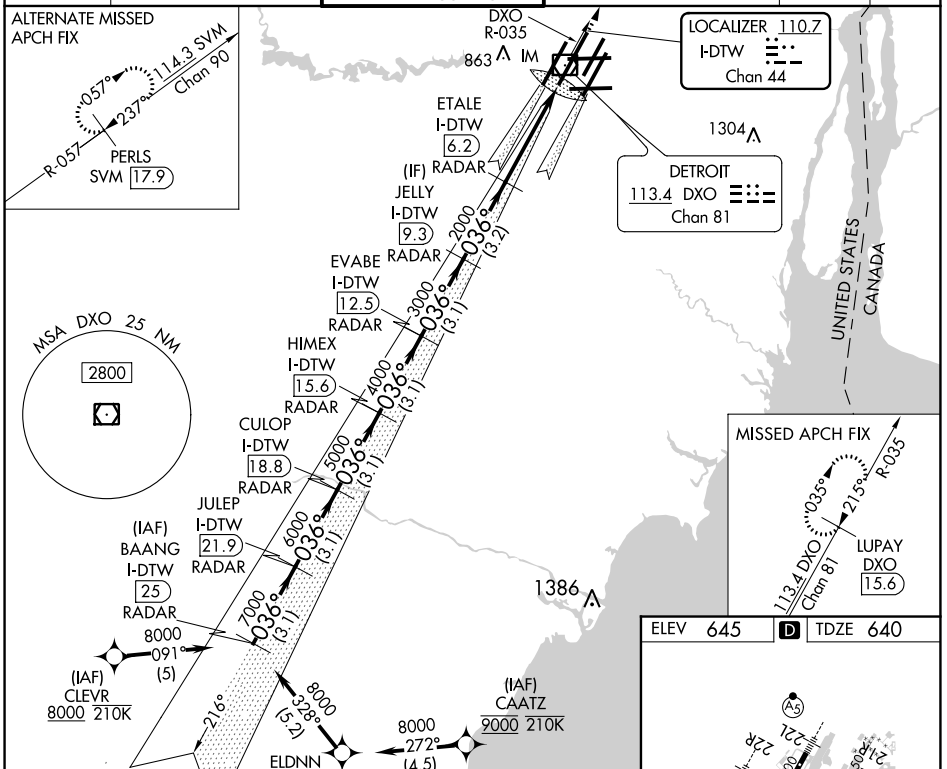
RNAV 1-GPS. DME or RADAR required. CLEVR, CAATZ and ELDNN: RNAV 1-DME/DME/IRU or GPS required. Aircraft not DME/DME/IRU or GPS equipped- RADAR required for procedure entry.

ALSIF-2

MISSED APPROACH: Climb to 4000 on DXO VOR/DME R-035 to LUPAY/DXO VOR/DME 15.6 DME and hold.

Simultaneous approach authorized. Use of FD or AP required during simultaneous operations. Dual VHF Comm required. See additional requirements on AAUP. Procedure NA when glideslope not available. Requires specific OPSPEC, MSPEC, or LOA approval and use of HUD to DH.

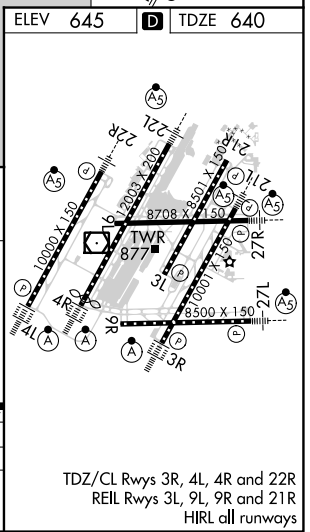
D-ATIS 133.675	DETROIT APP CON 124.05 284.0	METRO TOWER 128.125 317.725 PRM 135.775	GND CON 121.8 (NW) 119.45 (NE) 132.725 (SW) 119.25 (SE)	CLNC DEL 120.65	CPDLC
--------------------------	--	---	---	---------------------------	-------



BAANG I-DTW 25 RADAR	JULEP I-DTW 21.9 RADAR	CULOP I-DTW 18.8 RADAR	HIMEX I-DTW 15.6 RADAR	EVABE I-DTW 12.3 RADAR	JELLY I-DTW 9.3 RADAR	ETALE I-DTW 6.2 RADAR	IM
8000	7000	6000	5000	4000	3000	2000	2000
3.1 NM	3.1 NM	3.1 NM	3.1 NM	3.1 NM	3.2 NM	4.1 NM	980'

GS 3.00° TCH 52

4000 DXO R-035 LUPAY DXO **15.6**



CATEGORY	A	B	C	D
S-ILS 4R	RA 154/14		150 DA 790	

SA CATEGORY I ILS - SPECIAL AIRCREW & AIRCRAFT CERTIFICATION REQUIRED

DETROIT, MICHIGAN
Amdt 3A 13SEP18

42°13'N-83°21'W

DETROIT METRO WAYNE COUNTY (DTW)

ILS PRM RWY 4R (SA CAT I) (CLOSE PARALLEL)

EC-1, 02 DEC 2021 to 30 DEC 2021

EC-1, 02 DEC 2021 to 30 DEC 2021