

ILS PRM Y RWY 22R (CLOSE PARALLEL)

DETROIT METRO WAYNE COUNTY (DTW)

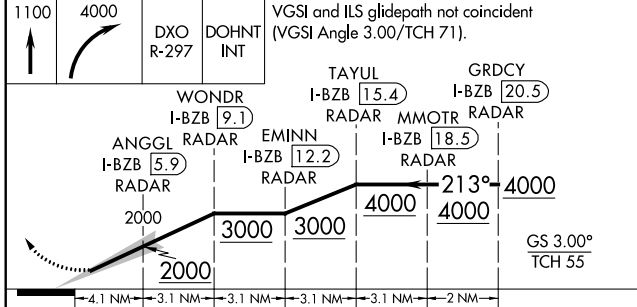
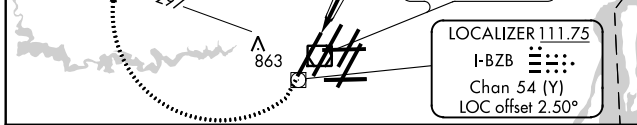
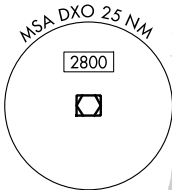
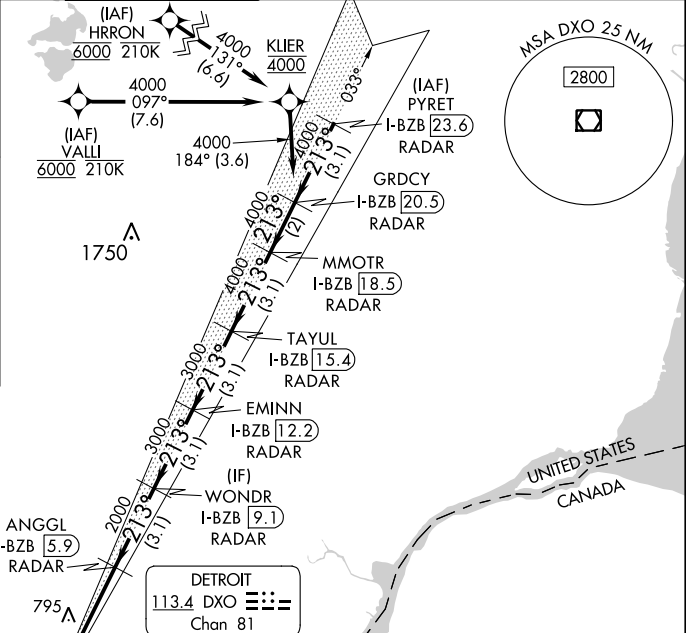
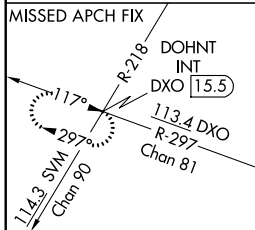
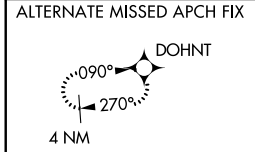
LOC/DME I-BZB 111.75	APP CRS 213°	Rwy Idg TDZE Apt Elev	10000 642 645
Chan 54 (Y)			

RNAV 1-GPS, HRRON and VALLI: RNAV 1-DME/DME/IRU or GPS required.
Aircraft not DME/DME/IRU or GPS equipped - RADAR required for procedure entry.

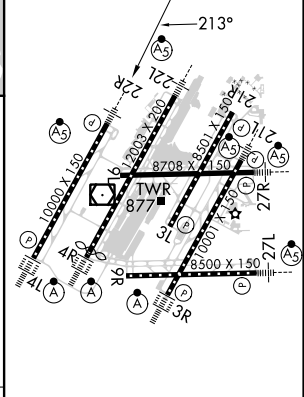
Simultaneous approach authorized.
Procedure NA when glide slope not available (ILS procedures only).
Dual VHF Comm required. See additional requirements on AAUP.

MALSR
MISSED APPROACH: Climb to 1100 then climbing right turn to 4000 on DXO VOR/DME R-297 to DOHNT INT/DXO 15.5 DME and hold.

D-ATIS 133.675	DETROIT APP CON 124.05 284.0	METRO TOWER 135.0 317.725 PRM 127.05	GND CON 121.8 (NW) 119.45 (NE) 132.725 (SW) 119.25 (SE)	CLNC DEL 120.65	CPDLC
--------------------------	--	--	---	---------------------------	-------



ELEV 645 TDZE 642



CATEGORY	A	B	C	D
S-ILS 22R		892/24	250 (300-1/2)	

TDZ/CL Rwy 3R, 4L, 4R and 22R
REIL Rwy 3L, 9L, 9R and 21R
HIRL all runways

EC-1, 02 DEC 2021 to 30 DEC 2021

EC-1, 02 DEC 2021 to 30 DEC 2021