

LOC/DME I-ALA <b>111.75</b>	APP CRS <b>038°</b>	Rwy Idg TDZE Apt Elev	<b>10000</b> <b>645</b> <b>645</b>
Chan <b>54</b> (Y)			

# ILS PRM Y RWY 4L (CLOSE PARALLEL)

DETROIT METRO WAYNE COUNTY (DTW)

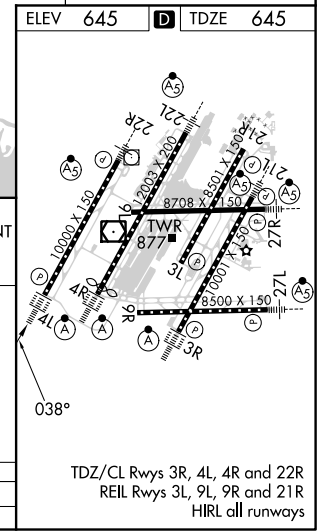
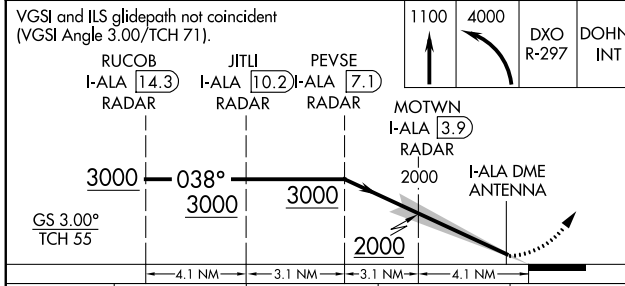
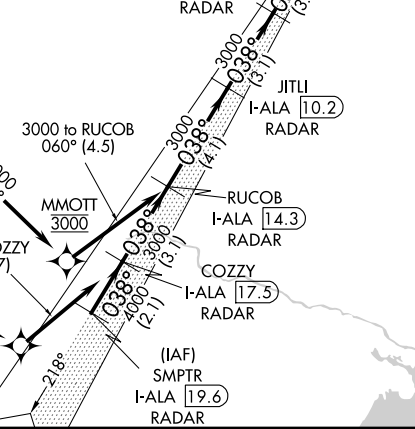
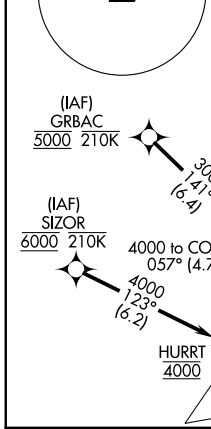
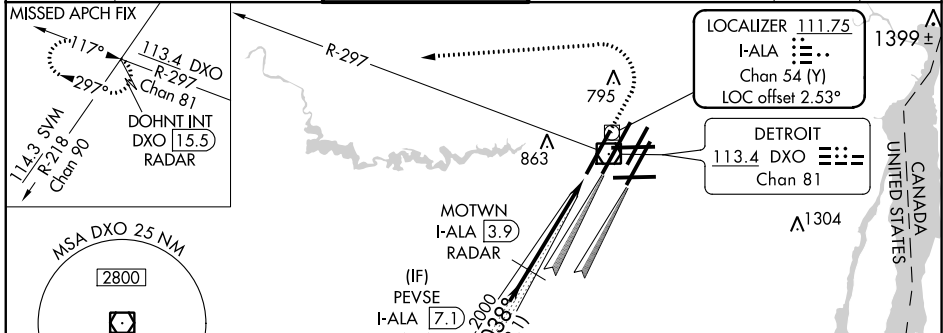
From GRBAC, SIZOR: RNAV 1-DME/DME/IRU or GPS required.  
Aircraft not DME/DME/IRU or GPS equipped - RADAR required for procedure entry.  
DME or RADAR required.

▼ Rwy 4L and 4R separated by 3000 feet centerline to centerline. Simultaneous approach authorized. Use of FD or AP required during simultaneous operations.  
Dual VHF Comm required. See additional requirements on AAUP.

ALSF-2

MISSED APPROACH: Climb to 1100 then climbing left turn to 4000 on DXO VOR/DME R-297 to DOHNT INT/DXO 15.5 DME/RADAR and hold.

D-ATIS <b>133.675</b>	DETROIT APP CON <b>124.05 284.0</b>	METRO TOWER <b>135.0 317.725</b> <b>PRM 127.05</b>	GND CON <b>121.8</b> (NW) <b>119.45</b> (NE) <b>119.25</b> (SE)	CLNC DEL <b>120.65</b>	CPDLC
--------------------------	--	--	---	---------------------------	-------



CATEGORY	A	B	C	D
S-ILS 4L	895/24 250 (300-1/2)			

EC-1, 02 DEC 2021 to 30 DEC 2021

EC-1, 02 DEC 2021 to 30 DEC 2021