

LOC/DME I-JKI 111.95	APP CRS 216°	Rwy Idg 10000
Chan 56 (Y)		TDZE 642
		Apt Elev 645

ILS Z or LOC RWY 22R

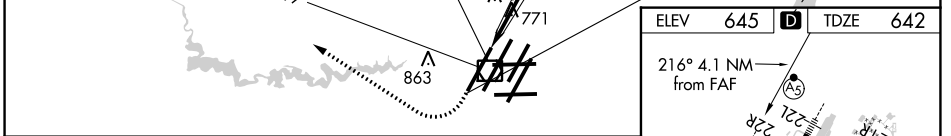
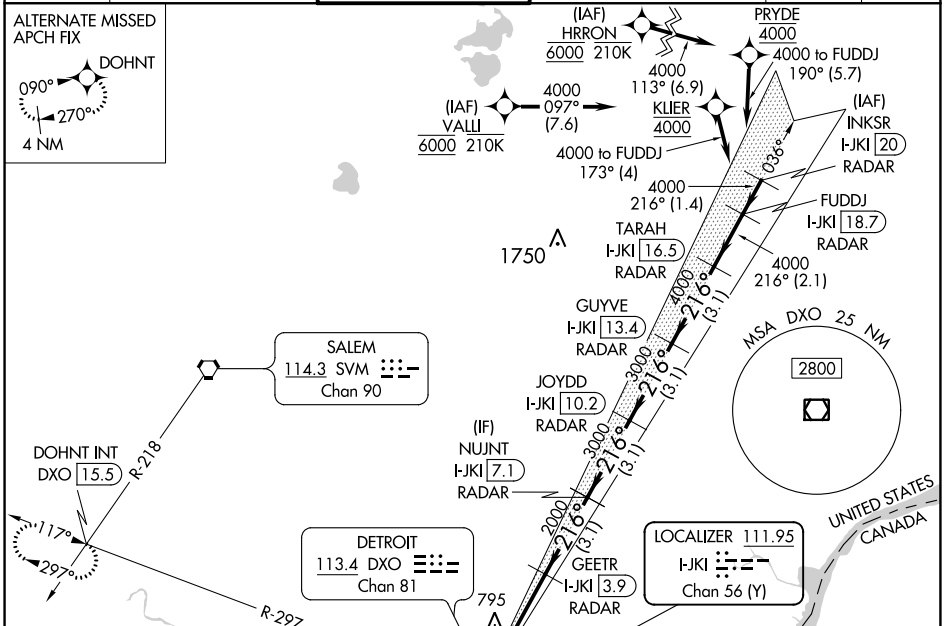
DETROIT METRO WAYNE COUNTY (DTW)

RNAV 1-GPS, HRRON and VALLI: RNAV 1-DME/DME/IRU or GPS required.
 Aircraft not DME/DME/IRU or GPS equipped - RADAR required for procedure entry.

MALSR MISSED APPROACH: Climb to 1100 then climbing right turn to 4000 on DXO VOR/DME R-297 to DOHNT INT/DXO 15.5 DME and hold.

Simultaneous approach authorized.
 **RVR 1800 authorized with use of FD or AP or HUD to DA.

D-ATIS 133.675	DETROIT APP CON 124.05 284.0	METRO TOWER 135.0 317.725	GND CON 121.8 (NW) 119.45 (NE) 132.725 (SW) 119.25 (SE)	CLNC DEL 120.65	CPDLC
--------------------------	--	-------------------------------------	---	---------------------------	-------



ELEV 645	TDZE 642	VGSi and ILS glidepath not coincident (VGSi Angle 3.00/TCH 71).			
DXO R-297	DOHNT INT	JOYDD I-JKI 10.2	GUYVE I-JKI 13.4	TARAH I-JKI 16.5	FUDDJ I-JKI 18.7
*LOC only.					
GEETR I-JKI 3.9	NUJNT I-JKI 7.1	RADAR			
I-JKI DME ANTENNA I-JKI 0.2	I-JKI 0.9	RADAR			
1100	4000	216° 4000			
11056	1.1 NM	3 NM	3.1 NM	3.1 NM	3.1 NM
CATEGORY	A	B	C	D	
S-ILS 22R**	842/24		200 (200-1/2)		
S-LOC 22R	1060/24	418 (500-1/2)	1060/40	418 (500-3/4)	
GS 3.00° TCH 55					
CI RINGING	1180-1	535 (600-1)	1180-1/2	535 (600-1/2)	1240-2
	595 (600-2)				

TDZ/CL Rwys 3R, 4L, 4R and 22R					
REIL Rwys 3L, 9L, 9R and 21R					
HIRL all Rwys					
FAF to MAP 4.1 NM					
Knots	60	90	120	150	180
Min:Sec	4:06	2:44	2:03	1:38	1:22

EC-1, 02 DEC 2021 to 30 DEC 2021

EC-1, 02 DEC 2021 to 30 DEC 2021