

(KAYLN2.KAYLN) 21112

DETROIT METRO WAYNE COUNTY (DTW)

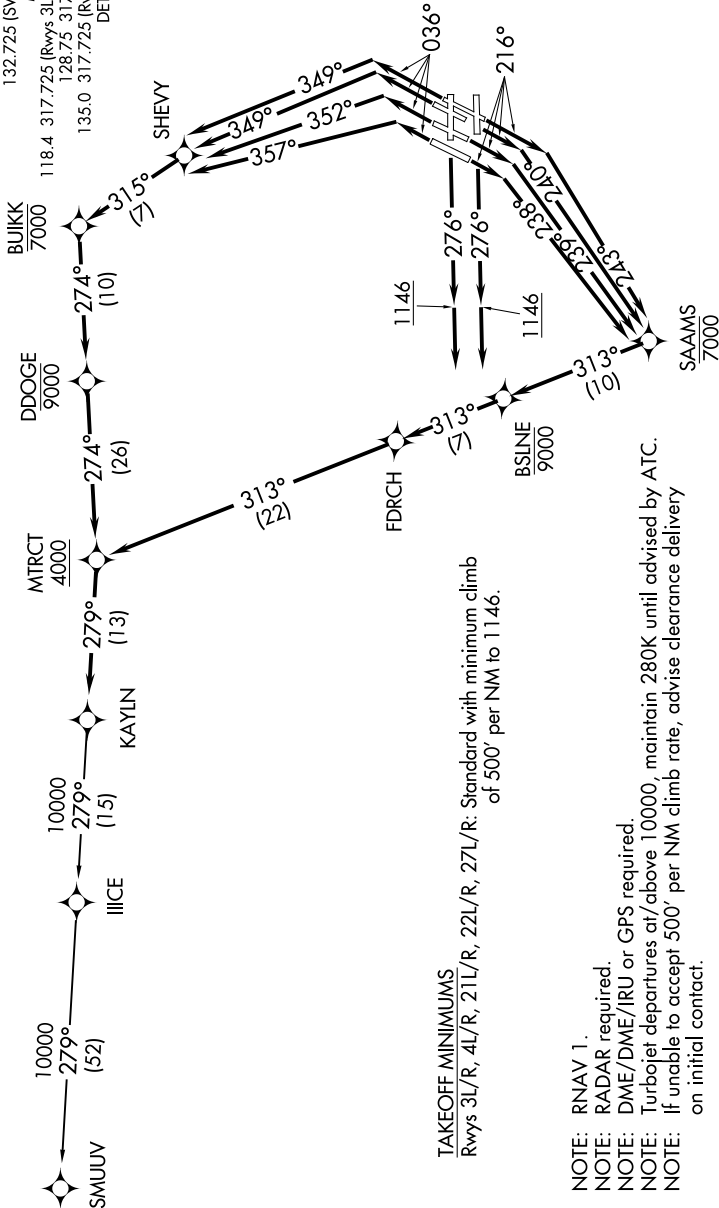
KAYLN TWO DEPARTURE (RNAV) AL-119 (FAA)

DETROIT, MICHIGAN

D-ATIS 118.125
 CLINC DEL 120.65
 CPDIC
 GND CON
 121.8 (NW) 119.45 (NE)
 132.725 (SW) 119.25 (SE)
 METRO TOWER
 118.4 317.725 (Rwys 3L/R, 21L/R, 27R)
 128.75 317.725 (Rwy 27L)
 135.0 317.725 (Rwy 4L/R, 22L/R)
 DETROIT DEP CON
 125.525 284.0

EC-1, 02 DEC 2021 to 30 DEC 2021

**TOP ALTITUDE:
17000**



TAKEOFF MINIMUMS

Rwys 3L/R, 4L/R, 21L/R, 22L/R, 27L/R, 27R: Standard with minimum climb of 500' per NM to 1146.

NOTE: RNAV 1.

NOTE: RADAR required.

NOTE: DME/DME/IRU or GPS required.

NOTE: Turbojet departures at/above 10000, maintain 280K until advised by ATC.

NOTE: If unable to accept 500' per NM climb rate, advise clearance delivery on initial contact.

NOTE: Chart not to scale.

(NARRATIVE ON FOLLOWING PAGE)

EC-1, 02 DEC 2021 to 30 DEC 2021

KAYLN TWO DEPARTURE (RNAV)

(KAYLN2.KAYLN) 15AUG19

DETROIT, MICHIGAN

DETROIT METRO WAYNE COUNTY (DTW)