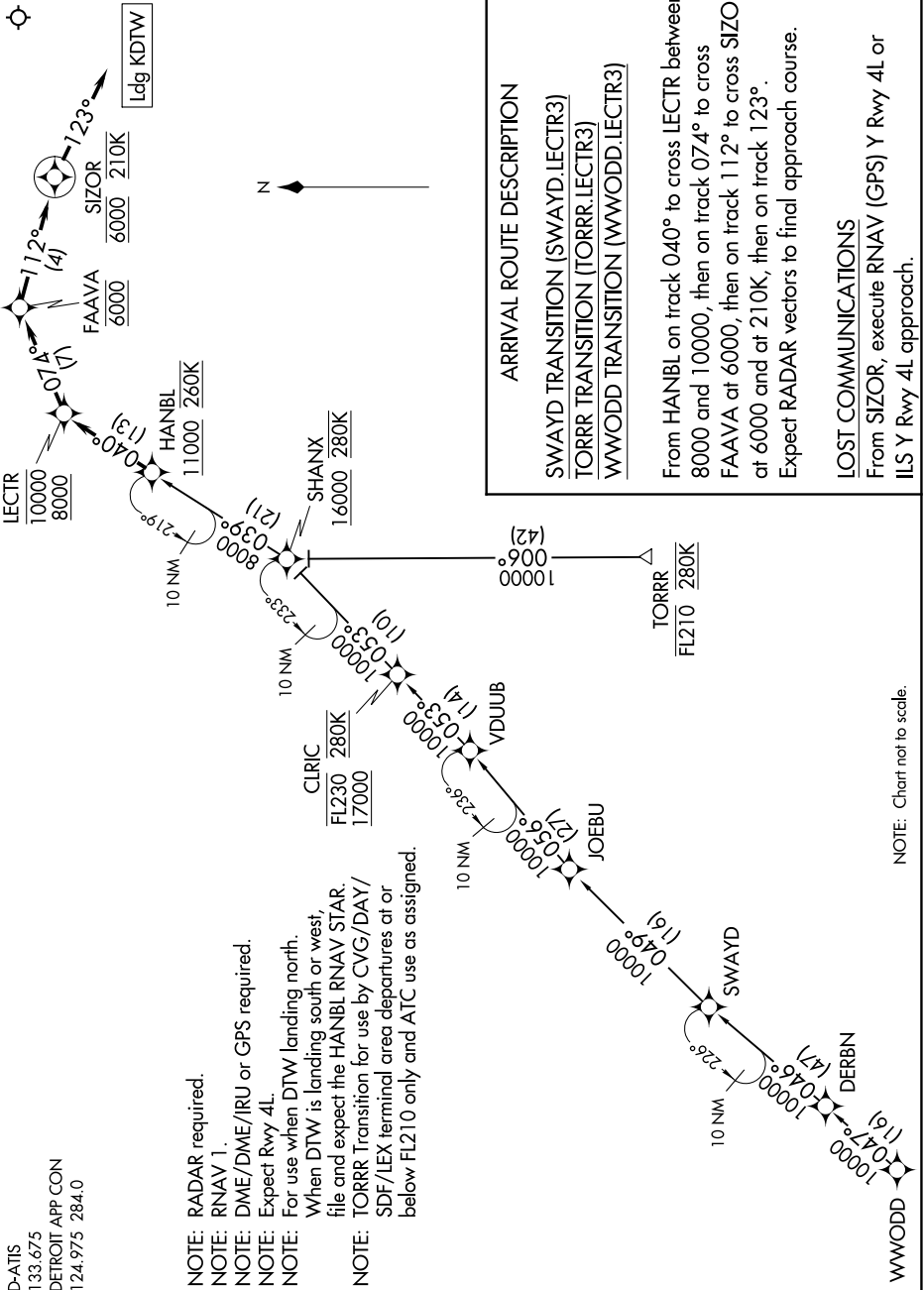


EC-1, 02 DEC 2021 to 30 DEC 2021

D-ATIS  
133.675  
DETROIT APP CON  
124.975 284.0

- NOTE: RADAR required.
- NOTE: RNAV 1.
- NOTE: DME/DME/IRU or GPS required.
- NOTE: Expect Rwy 4L.
- NOTE: For use when DTW landing north.  
When DTW is landing south or west,  
file and expect the HANBL RNAV STAR.
- NOTE: TORRR Transition for use by CVG/DAY/  
SDF/LEX terminal area departures at or  
below FL210 only and ATC use as assigned.



ARRIVAL ROUTE DESCRIPTION

- SWAYD TRANSITION (SWAYD.LECTR3)
- TORRR TRANSITION (TORRR.LECTR3)
- WWODD TRANSITION (WWODD.LECTR3)

From HANBL on track 040° to cross LECTR between 8000 and 10000, then on track 074° to cross FAAVA at 6000, then on track 112° to cross SIZOR at 6000 and at 210K, then on track 123°.  
Expect RADAR vectors to final approach course.

LOST COMMUNICATIONS

From SIZOR, execute RNAV (GPS) Y Rwy 4L or ILS Y Rwy 4L approach.

NOTE: Chart not to scale.

EC-1, 02 DEC 2021 to 30 DEC 2021