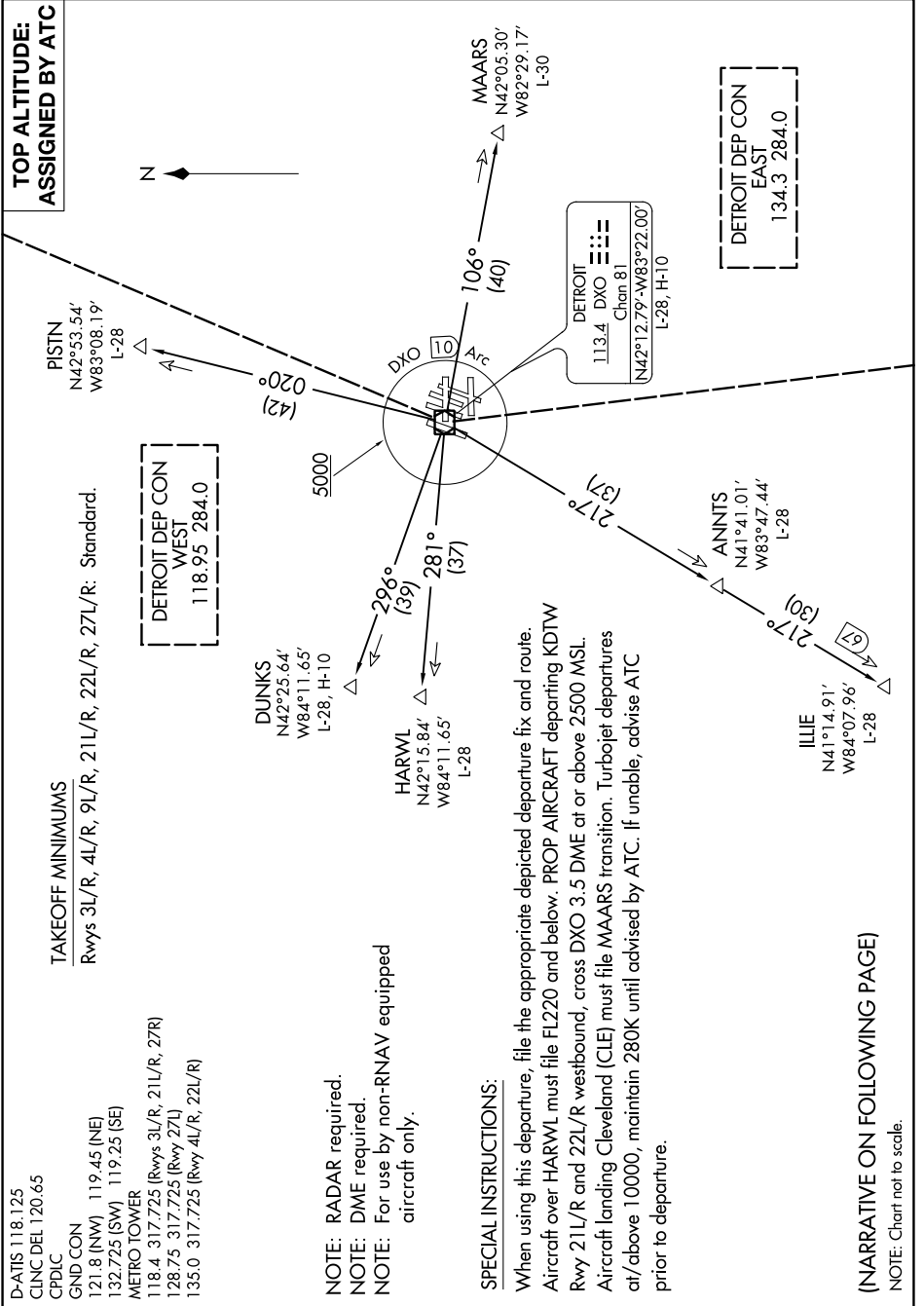


METRO THREE DEPARTURE

AL-119 (FAA)

DETROIT, MICHIGAN

EC-1, 02 DEC 2021 to 30 DEC 2021



NOTE: RADAR required.
NOTE: DME required.
NOTE: For use by non-RNAV equipped aircraft only.

SPECIAL INSTRUCTIONS:
 When using this departure, file the appropriate depicted departure fix and route. Aircraft over HARWL must file FL220 and below. PROP AIRCRAFT departing KDTW Rwy 21L/R and 22L/R westbound, cross DXO 3.5 DME at or above 2500 MSL. Aircraft landing Cleveland (CLE) must file MAARS transition. Turbojet departures at/above 10000, maintain 280K until advised by ATC. If unable, advise ATC prior to departure.

(NARRATIVE ON FOLLOWING PAGE)
 NOTE: Chart not to scale.

EC-1, 02 DEC 2021 to 30 DEC 2021

METRO THREE DEPARTURE