


RNAV (GPS) PRM Y RWY 22R (CLOSE PARALLEL)

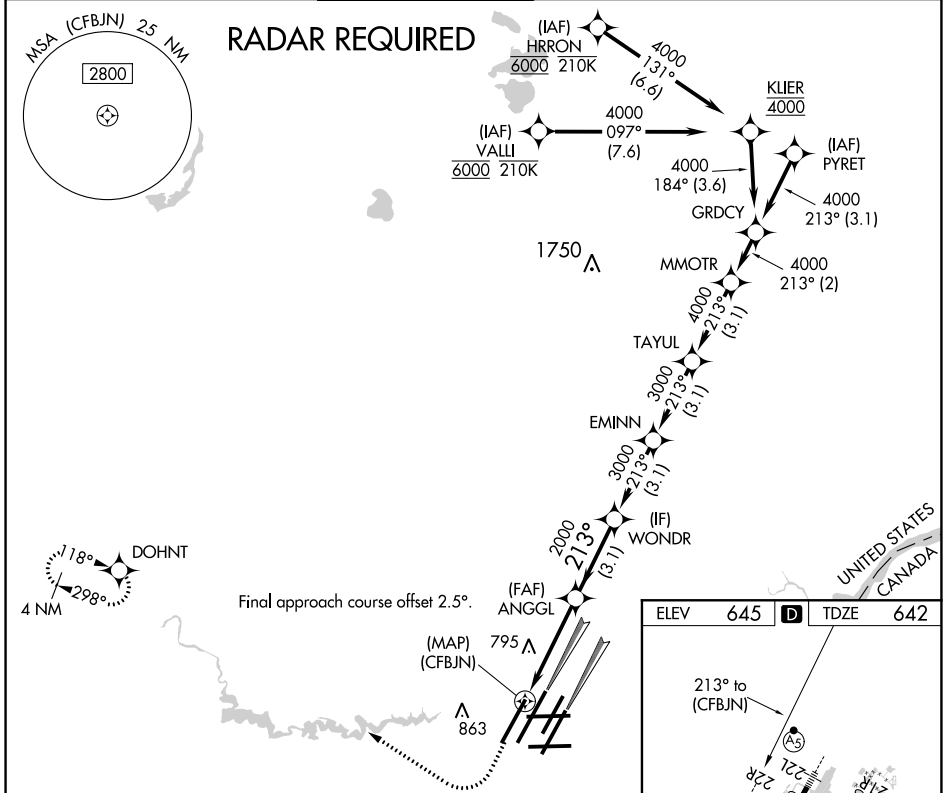
DETROIT METRO WAYNE COUNTY (DTW)

WAAS CH 42939 W22B	APP CRS 213°	Rwy Idg TDZE 642 Apt Elev 645
--	------------------------	---

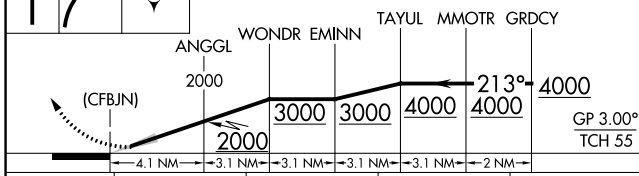
▼ For uncompensated Baro-VNAV systems, LNAV/VNAV NA below -19°C (-2°F) or above 54°C (130°F). DME/DME RNP-0.3 NA. Use of FD or AP providing RNAV track guidance required during simultaneous operations. Simultaneous approach authorized. Dual VHF comm required. See additional requirements on AAUP.

MALSR  MISSED APPROACH: Climb to 1100 then climbing right turn to 4000 direct DOHNT and hold.

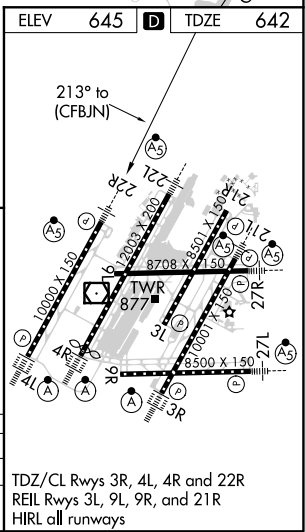
D-ATIS 133.675	DETROIT APP CON 124.05 284.0	METRO TOWER 135.0 317.725 PRM 127.05	GND CON 121.8 (NW) 119.45 (NE) 132.725 (SW) 119.25 (SE)	CLNC DEL 120.65	CPDLC
--------------------------	--	--	---	---------------------------	-------



1100 4000 DOHNT VGS1 and RNAV glidepath not coincident (VGS1 Angle 3.00/TCH 71).



CATEGORY	A	B	C	D
LPV DA		892/24	250 (300-½)	
LNAV/VNAV DA		1050/45	408 (500-¾)	



TDZ/CL Rws 3R, 4L, 4R and 22R
REIL Rws 3L, 9L, 9R, and 21R
HIRL all runways

EC-1, 02 DEC 2021 to 30 DEC 2021

EC-1, 02 DEC 2021 to 30 DEC 2021

RNAV (GPS) PRM Y RWY 22R (CLOSE PARALLEL)