

DETROIT, MICHIGAN

AL-119 (FAA)

RNAV (GPS) PRM Z RWY 22L (CLOSE PARALLEL)

DETROIT METRO WAYNE COUNTY (DTW)

WAAS CH 99601 W22A	APP CRS 216°	Rwy Idg TDZE Apt Elev	12003 637 645
--	------------------------	-----------------------------	--

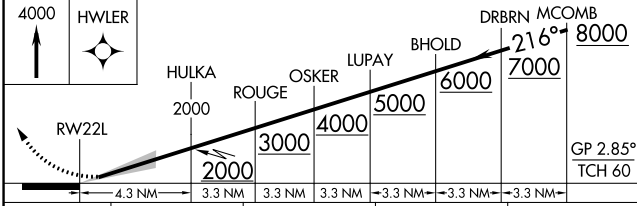
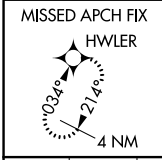
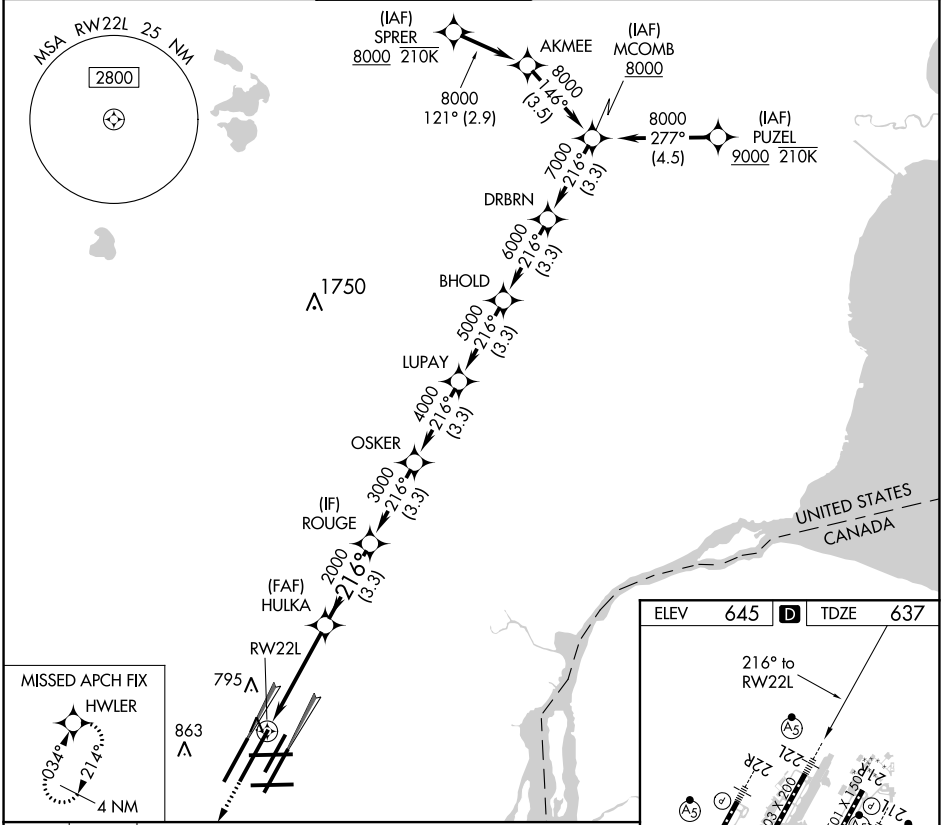
RNP APCH.

▼ For uncompensated Baro-VNAV systems, LNAV/VNAV NA below -10°C or above 54°C. Simultaneous approach authorized. Use of FD or AP required during simultaneous operations. Dual VHF comm required. See additional requirements on AAUP. For inop ALS, increase LNAV/VNAV all Cats visibility to RVR 4500. * RVR 1800 authorized with use of FD or AP or HUD to DA.

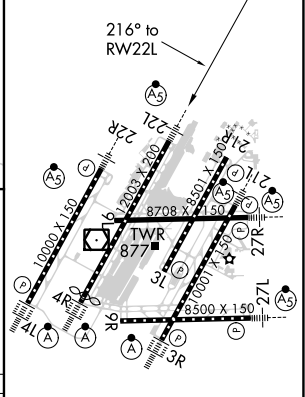


MISSED APPROACH:
Climb to 4000 direct
HWLER and hold.

D-ATIS 133.675	DETROIT APP CON 124.05 284.0	METRO TOWER 128.125 317.725 PRM 135.775	GND CON 121.8 (NW) 119.45 (NE) 132.725 (SW) 119.25 (SE)	CLNC DEL 120.65	CPDLC
--------------------------	--	---	---	---------------------------	-------



ELEV	645	D	TDZE	637
------	-----	---	------	-----



CATEGORY	A	B	C	D
LPV DA *		837/24	200 (200-1/2)	
LNAV/VNAV DA		938/24	301 (300-1/2)	

TDZ/CL Rwsy 3R, 4L, 4R, and 22R
REIL Rwsy 3L, 9L, 9R, and 21R
HIRL all runways

DETROIT, MICHIGAN
Amdt 1A 28FEB19

RNAV (GPS) PRM Z RWY 22L (CLOSE PARALLEL)

DETROIT METRO WAYNE COUNTY (DTW)

42°13'N-83°21'W

EC-1, 02 DEC 2021 to 30 DEC 2021

EC-1, 02 DEC 2021 to 30 DEC 2021