

DETROIT, MICHIGAN

AL-119 (FAA)

RNAV (GPS) PRM Z RWY 4R (CLOSE PARALLEL)

DETROIT METRO WAYNE COUNTY (DTW)

WAAS CH 87139 W04B	APP CRS 036°	Rwy Idg 11494 TDZE 640 Apt Elev 645
--	------------------------	--

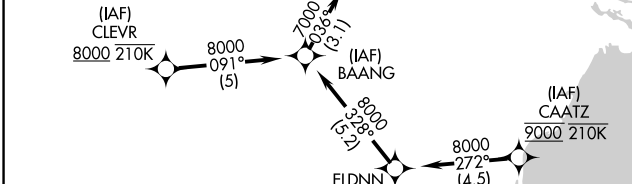
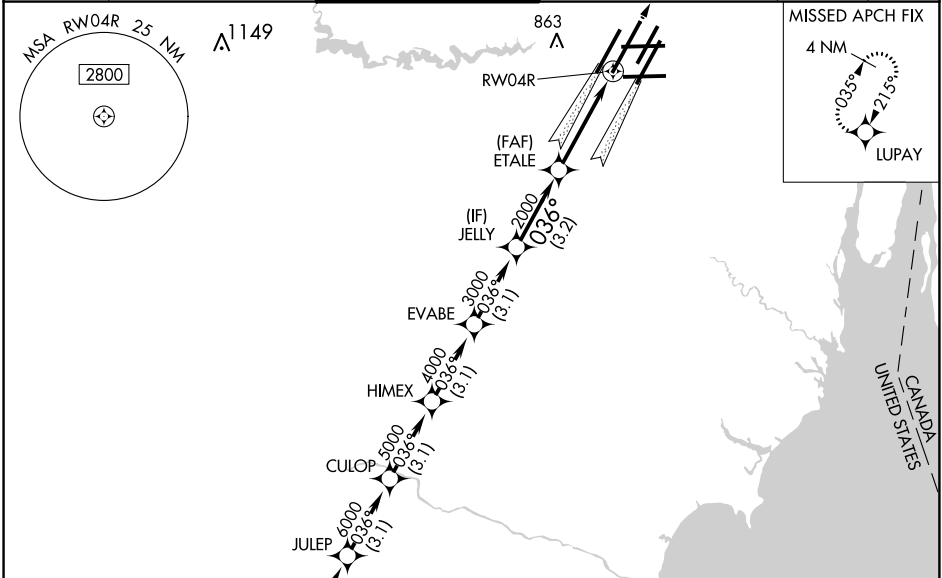
RNP APCH.

▽ For uncompensated Baro-VNAV systems, LNAV/VNAV NA below -19°C or above 54°C. Simultaneous approach authorized. Use of FD or AP required during simultaneous operations. Dual VHF comm required. See additional requirements on AAUP.

ALS-2

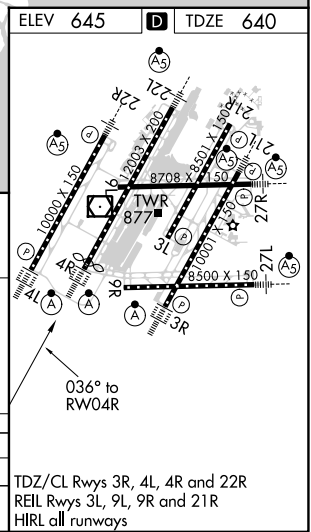
MISSED APPROACH:
Climb to 4000 direct LUPAY and hold.

D-ATIS 133.675	DETROIT APP CON 124.05 284.0	METRO TOWER 128.125 317.725 PRM 135.775	GND CON 121.8 (NW) 119.45 (NE) 132.725 (SW) 119.25 (SE)	CINC DEL 120.65	CPDLC
--------------------------	--	---	---	---------------------------	-------



BAANG	JULEP	CULOP	HIMEX	EVABE	JELLY	ETALE	RWY 4R
8000	7000	6000	5000	4000	3000	2000	2000
GP 3.00°		TCH 52					
3.1 NM		3.1 NM		3.1 NM		3.2 NM	
A		B		C		D	

CATEGORY						
LPV DA		840/18		200 (200-½)		
LNAV/VNAV DA		1021/35		381 (400-¾)		



DETROIT, MICHIGAN
Amdt 1A 28FEB19

RNAV (GPS) PRM Z RWY 4R (CLOSE PARALLEL)

DETROIT METRO WAYNE COUNTY (DTW)

42°13'N-83°21'W

EC-1, 02 DEC 2021 to 30 DEC 2021

EC-1, 02 DEC 2021 to 30 DEC 2021