

APP CRS	Rwy Idg	12003
216°	TDZE	637
	Apt Elev	645

RNAV (RNP) X RWY 22L

DETROIT METRO WAYNE COUNTY (DTW)

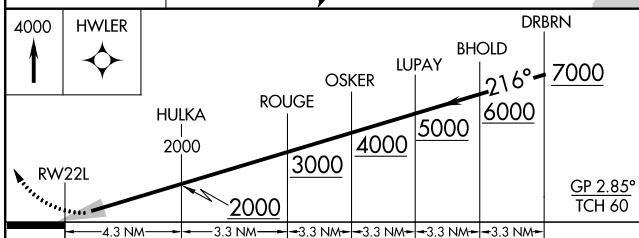
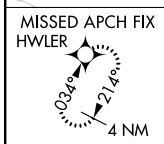
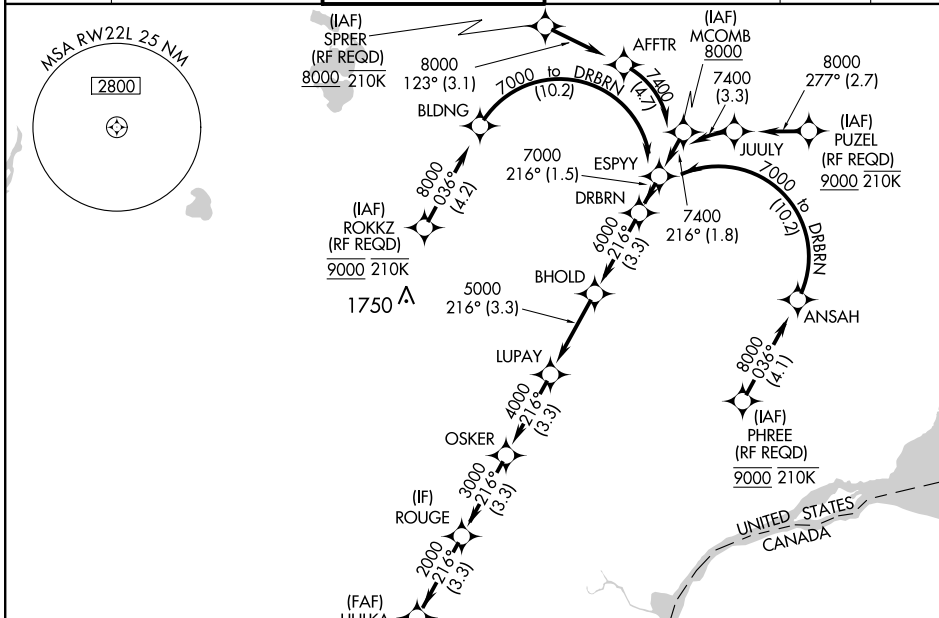
RNP AR APCH.

▼ For uncompensated Baro-VNAV systems, procedure NA below -10°C (14°F) or above 54°C (130°F). Simultaneous approach authorized. For inop ALS, increase RNP 0.15 all Cats visibility to RVR 4500 and RNP 0.30 all Cats visibility to RVR 6000.

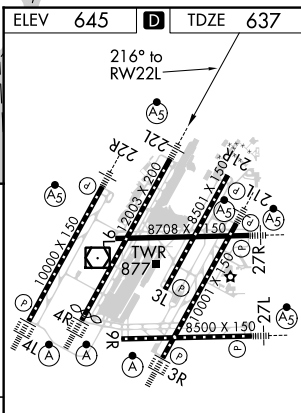
MALS R

MISSED APPROACH:
Climb to 4000 direct **HWLER** and hold.

D-ATIS 133.675	DETROIT APP CON 124.05 284.0	METRO TOWER 128.125 317.725	GND CON 121.8 (NW) 119.45 (NE) 132.725 (SW) 119.25 (SE)	CLNC DEL 120.65	CPDLC
--------------------------	--	--	--	---------------------------	-------



CATEGORY	A	B	C	D
RNP 0.15 DA	941/24		304 (300-½)	
RNP 0.30 DA	1040/40		403 (400-¾)	



TDZ/CL Rws 3R, 4L, 4R and 22R
REIL Rws 3L, 9L, 9R and 21R
HIRL all runways

AUTHORIZATION REQUIRED

EC-1, 02 DEC 2021 to 30 DEC 2021

EC-1, 02 DEC 2021 to 30 DEC 2021