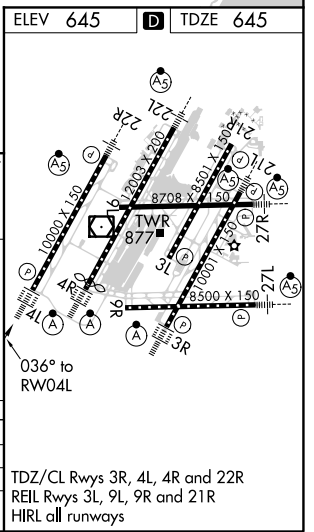
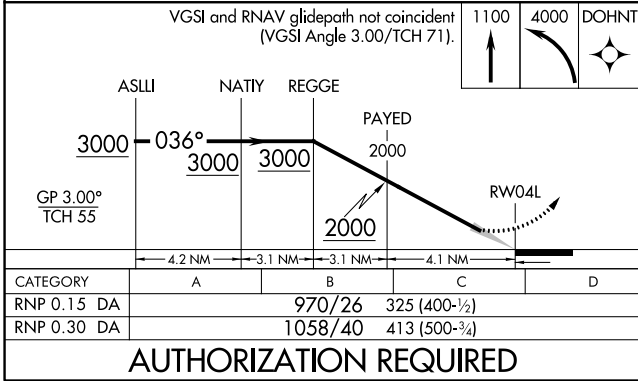
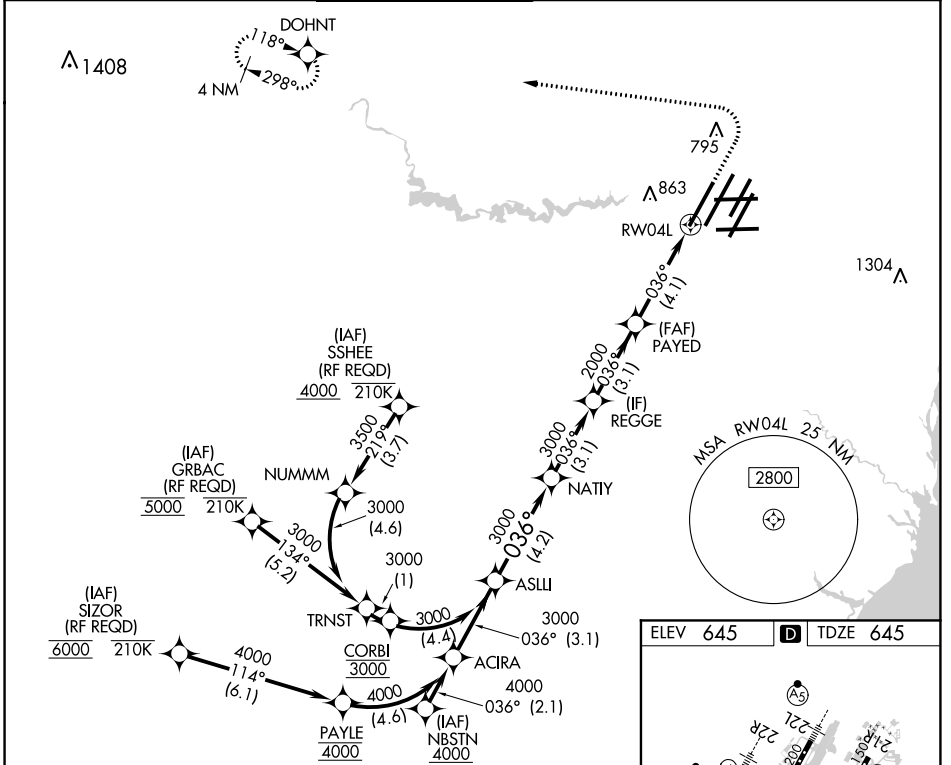


APP CRS <b>036°</b>	Rwy Idg <b>10000</b>
	TDZE <b>645</b>
	Apt Elev <b>645</b>

# RNAV (RNP) X RWY 4L

DETROIT METRO WAYNE COUNTY (DTW)

RNP AR APCH.		ALSF-2	MISSED APPROACH: Climb to 1100 then climbing left turn to 4000 direct DOHNT and hold.		
Simultaneous approach authorized. For uncompensated Baro-VNAV systems, procedure NA below -19°C or above 54°C. For inop ALS, increase RNP 0.30 DA all Cats visibility to RVR 6000.					
D-ATIS <b>133.675</b>	DETROIT APP CON <b>124.05 284.0</b>	METRO TOWER <b>135.0 317.725</b>	GND CON <b>121.8 (NW) 119.45 (NE)</b> <b>132.725 (SW) 119.25 (SE)</b>	CLNC DEL <b>120.65</b>	CPDLC



EC-1, 02 DEC 2021 to 30 DEC 2021

EC-1, 02 DEC 2021 to 30 DEC 2021