


WAAS CH 99601 W22A	APP CRS 216°	Rwy Idg 12003 TDZE 637 Apt Elev 645
--	------------------------	--

RNAV (GPS) Z RWY 22L

DETROIT METRO WAYNE COUNTY (DTW)

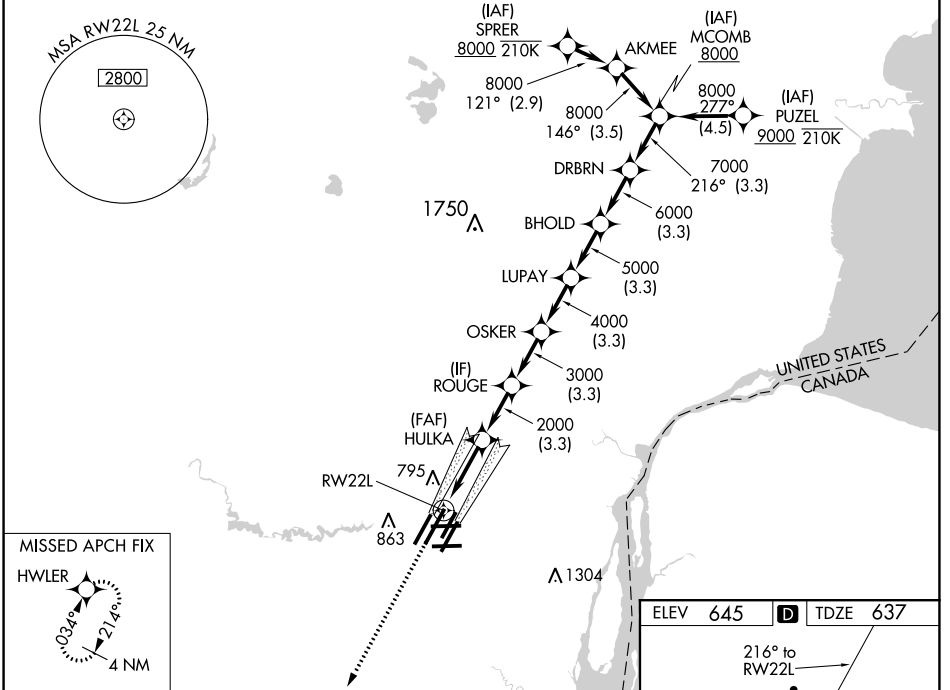
RNP APCH.

▼ For uncompensated Baro-VNAV systems, LNAV/VNAV NA below -10°C (14°F) or above 54°C (130°F). Simultaneous approach authorized. LNAV procedure NA during simultaneous operations. Use of FD or AP required during simultaneous operations. For inop ALS, increase LNAV/VNAV all Cats visibility to RVR 4500 and LNAV Cat C/D visibility to 1½ SM. #RVR 1800 authorized with use of FD or AP or HUD to DA.

MALSRS 

MISSED APPROACH: Climb to 4000 direct HWLER and hold.

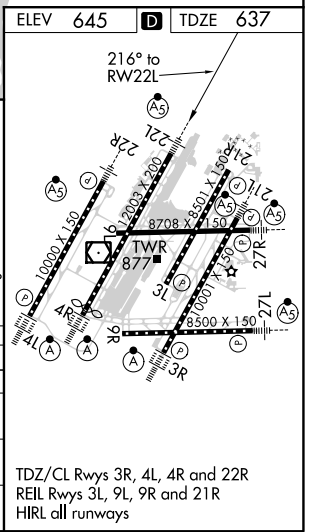
D-ATIS 133.675	DETROIT APP CON 124.05 284.0	METRO TOWER 128.125 317.725	GND CON 121.8 (NW) 119.45 (NE) 132.725 (SW) 119.25 (SE)	CLNC DEL 120.65	CPDLC
--------------------------	--	---------------------------------------	---	---------------------------	-------



MISSED APCH FIX
HWLER

4 NM

4000	HWLER				
*LNAV only.		DRBRN MCOMB 8000			
* 1.3 NM to RW22L		216°			
RW22L		HULKA 2000	ROUGE 3000	OSKER 4000	LUPAY 5000
				BHOLD 6000	DRBRN 7000
					MCOMB 8000
					GP 2.85° TCH 60
CATEGORY	3	A	B	C	D
LPV DA#			837/24	200 (200-½)	
LNAV/VNAV DA			938/24	301 (300-½)	
LNAV MDA	1100/24	463 (500-½)		1100/50	463 (500-¾)
CIRCLING	1180-1	535 (600-1)		1180-1½	1240-2
				535 (600-½)	595 (600-2)



EC-1, 02 DEC 2021 to 30 DEC 2021

EC-1, 02 DEC 2021 to 30 DEC 2021