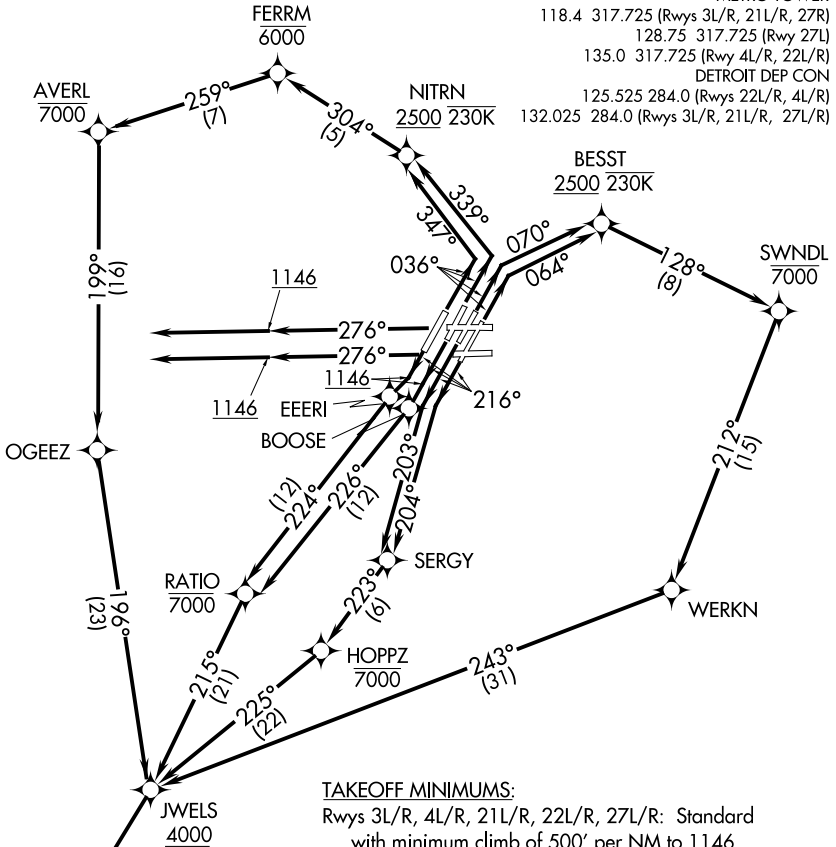


SNDRS TWO DEPARTURE (RNAV) Departure Routes

**TOP ALTITUDE:
17000**

D-ATIS 118.125
 CLNC DEL 120.65
 CPDLC
 GND CON
 121.8 (NW) 119.45 (NE)
 132.725 (SW) 119.25 (SE)
 METRO TOWER
 118.4 317.725 (Rwys 3L/R, 21L/R, 27R)
 128.75 317.725 (Rwy 27L)
 135.0 317.725 (Rwy 4L/R, 22L/R)
 DETROIT DEP CON
 125.525 284.0 (Rwys 22L/R, 4L/R)
 132.025 284.0 (Rwys 3L/R, 21L/R, 27L/R)



TAKEOFF MINIMUMS:

Rwys 3L/R, 4L/R, 21L/R, 22L/R, 27L/R: Standard with minimum climb of 500' per NM to 1146.

- NOTE: RNAV 1.
- NOTE: RADAR required.
- NOTE: DME/DME/IRU or GPS required.
- NOTE: Turbojet departures at/above 10000, maintain 280K until advised by ATC.
- NOTE: TORRR TRANSITION: For use by KIND and KCVG area arrivals only and flights filed at or below FL220, or as assigned by ATC.
- NOTE: If unable to accept 500' per NM climb rate, advise clearance delivery on initial contact.

◆ SNDRS
 See following page for Transition Routes

(CONTINUED ON FOLLOWING PAGE)

NOTE: Chart not to scale.

EC-1, 02 DEC 2021 to 30 DEC 2021

EC-1, 02 DEC 2021 to 30 DEC 2021