

TPGUN TWO ARRIVAL(RNAV)

AL-119 (FAA)

DETROIT, MICHIGAN

EC-1, 02 DEC 2021 to 30 DEC 2021

NOTE: RADAR required.

NOTE: RNAV 1.

NOTE: DME/DME/IRU or GPS required.

NOTE: Expect Rwy 21L.

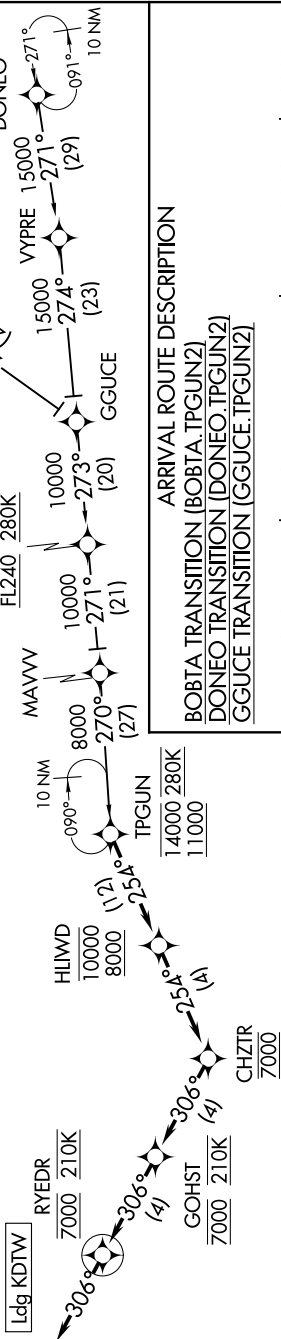
NOTE: Jet aircraft descend via Mach number until intercepting

280K. Maintain 280K until slowed by the STAR.

NOTE: For use when DTW landing south or west. When DTW

landing north, file and expect the CUUGR RNAV STAR.

NOTE: GGUCE TRANSITION: Except for flights originating in Canada, do not file, to be assigned by ATC.



ARRIVAL ROUTE DESCRIPTION

BOBTA TRANSITION (BOBTA.TPGUN2)

DONEO TRANSITION (DONEO.TPGUN2)

GGUCE TRANSITION (GGUCE.TPGUN2)

From TPGUN on track 254° to cross HLIWD between 8000 and 10000, then on track 254° to CHZTR at 7000, then on track 306° to cross GOHST at 7000 and at 210K, then on track 306° to cross RYEDR at 7000 and at 210K, then on track 306°. Expect RADAR vectors to final approach course.

LOST COMMUNICATIONS:

From RYEDR, execute ILS Rwy 21L approach.

NOTE: Chart not to scale.

TPGUN TWO ARRIVAL (RNAV)

(TPGUN.TPGUN2) 10OCT19

DETROIT, MICHIGAN

DETROIT METRO WAYNE COUNTY (DTW)

EC-1, 02 DEC 2021 to 30 DEC 2021