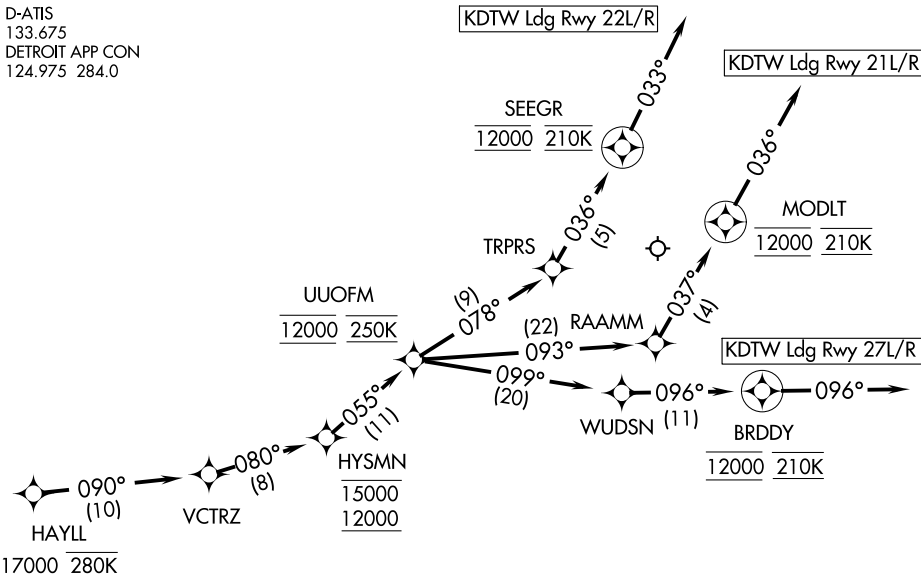


VCTRZ TWO ARRIVAL (RNAV) Arrival Routes

D-ATIS  
133.675  
DETROIT APP CON  
124.975 284.0



- NOTE: RADAR required.
- NOTE: RNAV 1.
- NOTE: DME/DME/IRU or GPS required.
- NOTE: Use Runway 22R transition or as assigned by ATC.  
Expect runway assignment from Detroit APP CON no later than 10 NM from UUOFM.
- NOTE: For use when DTW landing south or west. When DTW landing north, file and expect the HAYLL RNAV STAR.
- NOTE: For use by flights departing KMDW, KSBN, KAZO, KMCI, KLAS, KLAX, KPHX, KSAN, AND KSNA area airports only, or as assigned by ATC.

NOTE: Chart not to scale.

ARRIVAL ROUTE DESCRIPTION

From HAYLL on track 090° to VCTRZ, then on track 080° to cross HYSMNM between 12000 and 15000, then on track 055° to cross UUOFM at 12000 and at 250K.

LANDING RUNWAY 21L/R: From UUOFM on track 093° to RAAMM, then on track 037° to cross MODLT at 12000 and at 210K, then on track 036°. Expect RADAR vectors to final approach course.

LANDING RUNWAY 22L/R: From UUOFM on track 078° to TRPRS, then on track 036° to cross SEEGR at 12000 and at 210K, then on track 033°. Expect RADAR vectors to final approach course.

LANDING RUNWAY 27L/R: From UUOFM on track 099° to WUDSN, then on track 096° to cross BRDDY at 12000 and at 210K, then on track 096°. Expect RADAR vectors to final approach course.