

LOC I-CRG <b>111.7</b>	APP CRS <b>321°</b>	Rwy Idg TDZE Apt Elev	<b>4008</b> <b>41</b> <b>41</b>
---------------------------	------------------------	-----------------------------	---------------------------------------

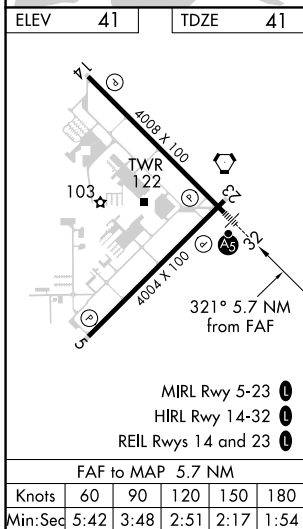
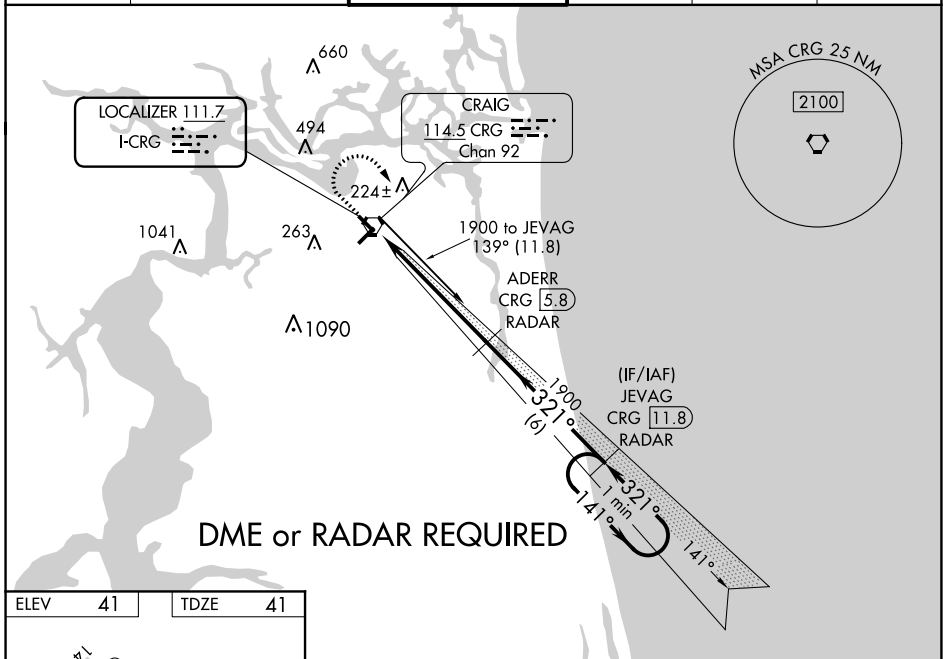
# ILS or LOC RWY 32

JACKSONVILLE EXEC AT CRAIG (CRG)

**⚠** Night landing: Rwy 5 NA. DME or radar required. Helicopter visibility reduction below 1 SM NA. When local altimeter setting not received, use Jacksonville Intl altimeter setting and increase all DA 32 feet and all MDA 40 feet. For inop MALSRL, increase S-LOC 32 Cats C/D visibility to 1 1/4 mile. For inop MALSRL, when using Jacksonville Intl altimeter setting, increase S-LOC 32 Cats C/D visibility to 1 3/8 mile.

**MALSRL** MISSED APPROACH: Climb to 700 then climbing right turn to 1900 on heading 180° and on CRG VORTAC R-139 to JEVAG/CRG VORTAC 11.8 DME/RADAR and hold.

ATIS <b>125.4</b>	JACKSONVILLE APP CON <b>124.9 308.4</b>	CRAIG TOWER ★ <b>132.1 (CTAF) 269.525</b>	GND CON <b>121.8</b>	CLNC DEL <b>118.35</b>	UNICOM <b>122.95</b>
----------------------	--	--	-------------------------	---------------------------	-------------------------



700	1900	CRG R-139	JEVAG CRG 11.8	ADERR CRG 5.8 RADAR	JEVAG CRG 11.8 RADAR	One Minute Holding Pattern
-----	------	-----------	----------------	---------------------	----------------------	----------------------------

CATEGORY	A	B	C	D
S-ILS 32		241-1	200 (200-1)	
S-LOC 32		480-1	439 (500-1)	
CIRCLING	500-1 459 (500-1)	580-1 539 (600-1)	580-1 1/2 539 (600-1 1/2)	600-2 559 (600-2)