

WAAS CH <b>63031</b> <b>W14A</b>	APP CRS <b>141°</b>	Rwy Idg <b>4008</b> TDZE <b>41</b> Apt Elev <b>41</b>
--	------------------------	---

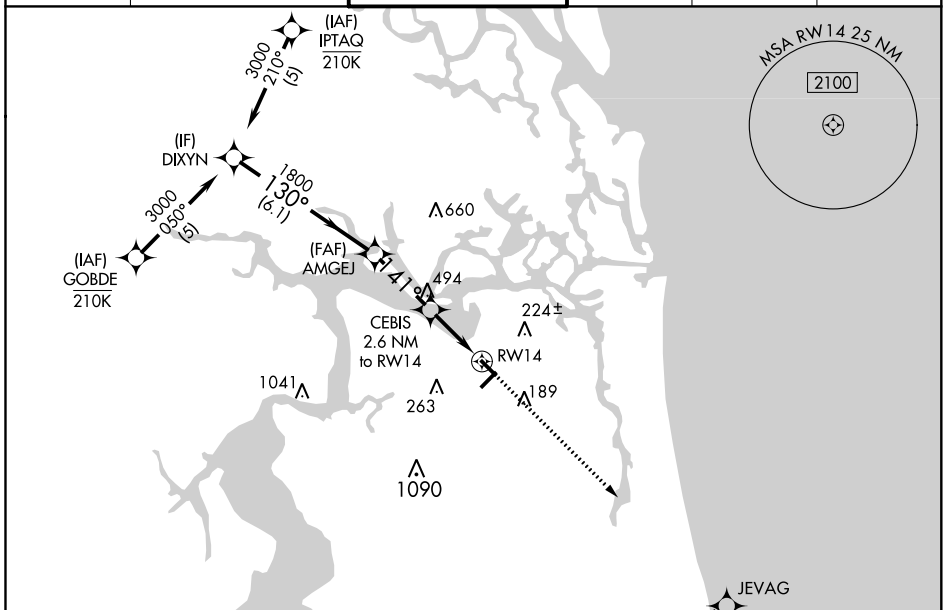
# RNAV (GPS) RWY 14

JACKSONVILLE EXEC AT CRAIG (CRG)

**▼** Procedure NA at night. Baro-VNAV NA when using Jacksonville Intl altimeter setting. For uncompensated Baro-VNAV systems, LNAV/VNAV NA below -3°C (27°F) or above 54°C (130°F). DME/DME RNP-0.3 NA. Helicopter visibility reduction below 1 SM NA. When local altimeter setting not received, use Jacksonville Intl altimeter setting and increase all DA 32 feet and all MDA 40 feet. Increase LNAV/VNAV all Cats visibility to 1¾ and LNAV Cat D visibility to 1½.

**MISSED APPROACH:**  
Climb to 1900 direct JEVAG and hold.

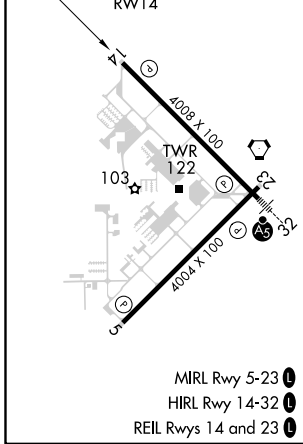
ATIS <b>125.4</b>	JACKSONVILLE APP CON <b>124.9 308.4</b>	<b>CRAIG TOWER ★</b> <b>132.1</b> (CTAF) <b>269.525</b>	GND CON <b>121.8</b>	CLNC DEL <b>118.35</b>	UNICOM <b>122.95</b>
----------------------	--	--	-------------------------	---------------------------	-------------------------



SE-3, 02 DEC 2021 to 30 DEC 2021

SE-3, 02 DEC 2021 to 30 DEC 2021

ELEV	41	TDZE	41
------	----	------	----



	DIXYN	AMGEJ	CEBIS 2.6 NM to RWY 14	RWY 14	1900	JEVAG
	3000			*900	↑	✧
	130°	141°			*LNAV only.	
	1800					
	6.1 NM	2.8 NM	2.6 NM			
CATEGORY	A	B	C	D		
LPV DA		293-1	252 (300-1)			
LNAV/VNAV DA		418-1¼	377 (400-1¼)			
LNAV MDA	500-1	459 (500-1)	500-1¾	459 (500-1¾)		
CIRCLING	500-1 459 (500-2)	580-1 539 (600-2)	580-1½ 539 (600-1½)	600-2 559 (600-2)		