

# CONDR THREE ARRIVAL (RNAV)

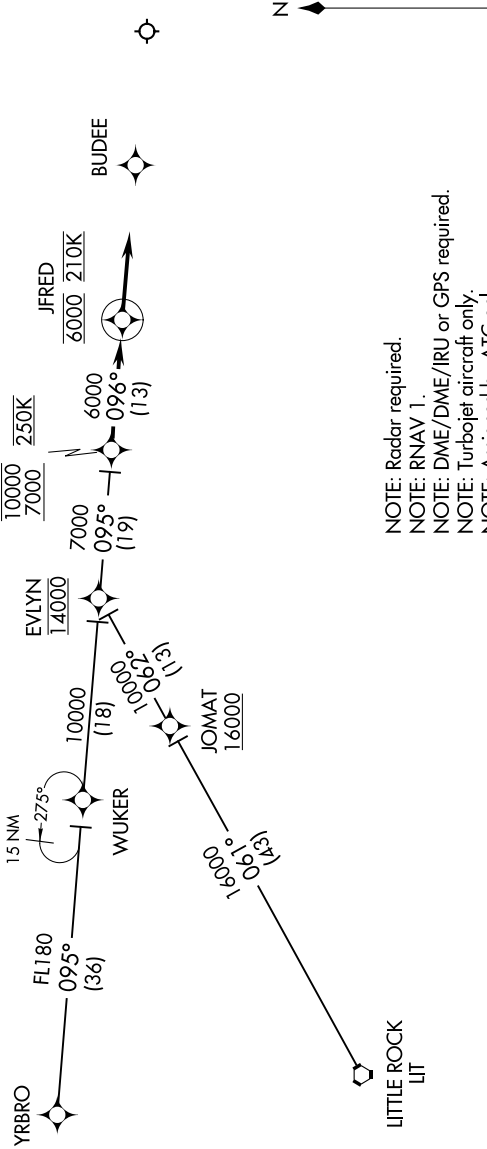
SE-1, 02 DEC 2021 to 30 DEC 2021

## ARRIVAL ROUTE DESCRIPTION

EVLYN TRANSITION (EVLYN.CONDR3):  
LITTLE ROCK TRANSITION (LIT.CONDR3):  
YRBRO TRANSITION (YRBRO.CONDR3):

From over CONDR on track 096° to JFRED, cross JFRED at 6000 at 210K, then on track 096°. Expect radar vectors to final approach course.

MEMPHIS APP CON  
119.1 291.6 (176°-355°)  
125.8 338.3 (356°-175°)  
D-ATIS  
127.75



NOTE: Radar required.  
NOTE: RNAV 1.  
NOTE: DME/DME/IRU or GPS required.  
NOTE: Turbojet aircraft only.  
NOTE: Assigned by ATC only.

NOTE: Chart not to scale.

# CONDR THREE ARRIVAL (RNAV)

(CONDR.CONDR3) 01FEB18

SE-1, 02 DEC 2021 to 30 DEC 2021