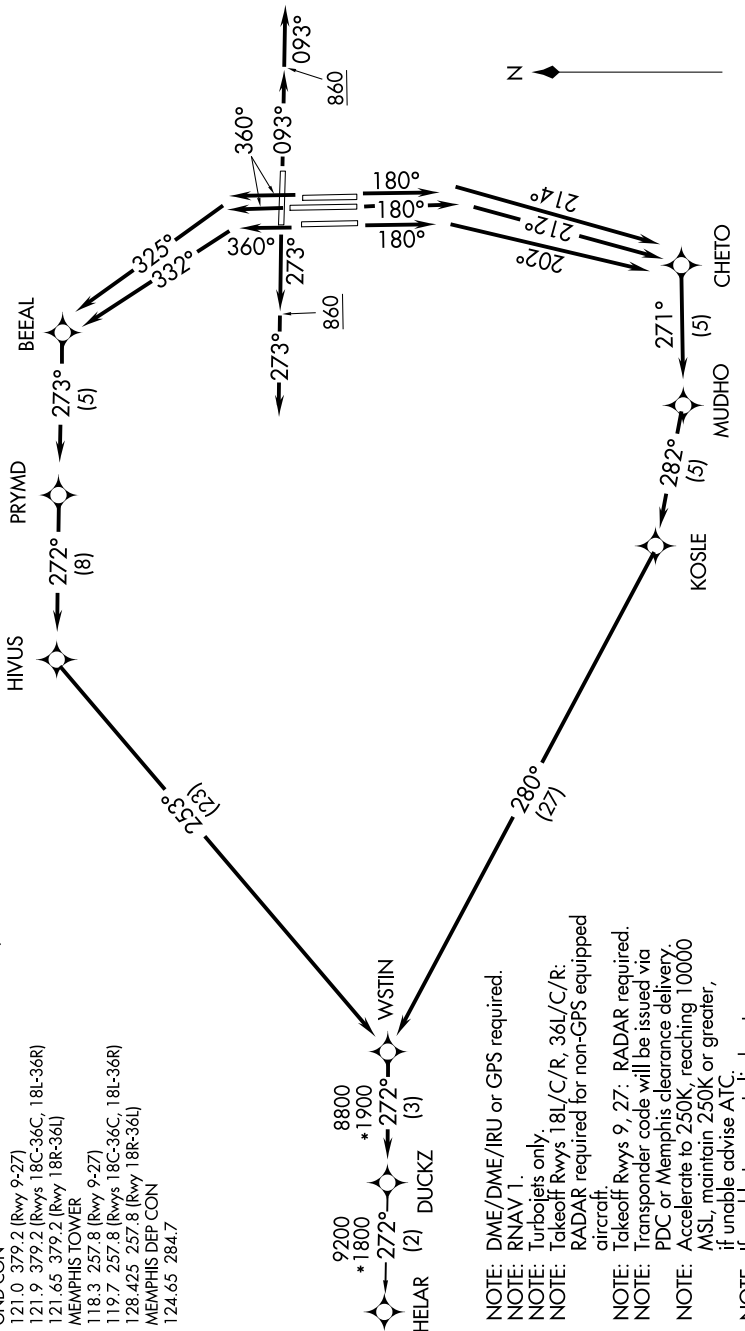


DUCKZ FIVE DEPARTURE (RNAV)

**TOP ALTITUDE:
5000**

TAKEOFF MINIMUMS:
Rwys 9, 18L/C/R, 27, 36L/C/R:
Standard with minimum climb of
500' per NM to 860.

- D-ATIS 127.75
- CLNC DEL 125.2
- CPDLC
- GND CON 121.0 379.2 (Rwy 9-27)
- 121.9 379.2 (Rwys 18C-36C, 18L-36R)
- 121.65 379.2 (Rwy 18R-36L)
- MEMPHIS TOWER 118.3 257.8 (Rwy 9-27)
- 119.7 257.8 (Rwys 18C-36C, 18L-36R)
- 128.425 257.8 (Rwy 18R-36L)
- MEMPHIS DEP CON 124.65 284.7



- NOTE: DME/DME/IRU or GPS required.
- NOTE: RNAV 1.
- NOTE: Turbojets only.
- NOTE: Takeoff Rwys 18L/C/R, 36L/C/R.
- NOTE: RADAR required for non-GPS equipped aircraft.
- NOTE: Takeoff Rwys 9, 27: RADAR required.
- NOTE: Transponder code will be issued via PDC or Memphis clearance delivery.
- NOTE: Accelerate to 250K, reaching 10000 MSL, maintain 250K or greater, if unable advise ATC.
- NOTE: if unable to accept climb rates, advise ATC on initial contact.

(NARRATIVE ON FOLLOWING PAGE)

NOTE: Chart not to scale.

SE-1, 02 DEC 2021 to 30 DEC 2021

SE-1, 02 DEC 2021 to 30 DEC 2021

DUCKZ FIVE DEPARTURE (RNAV)