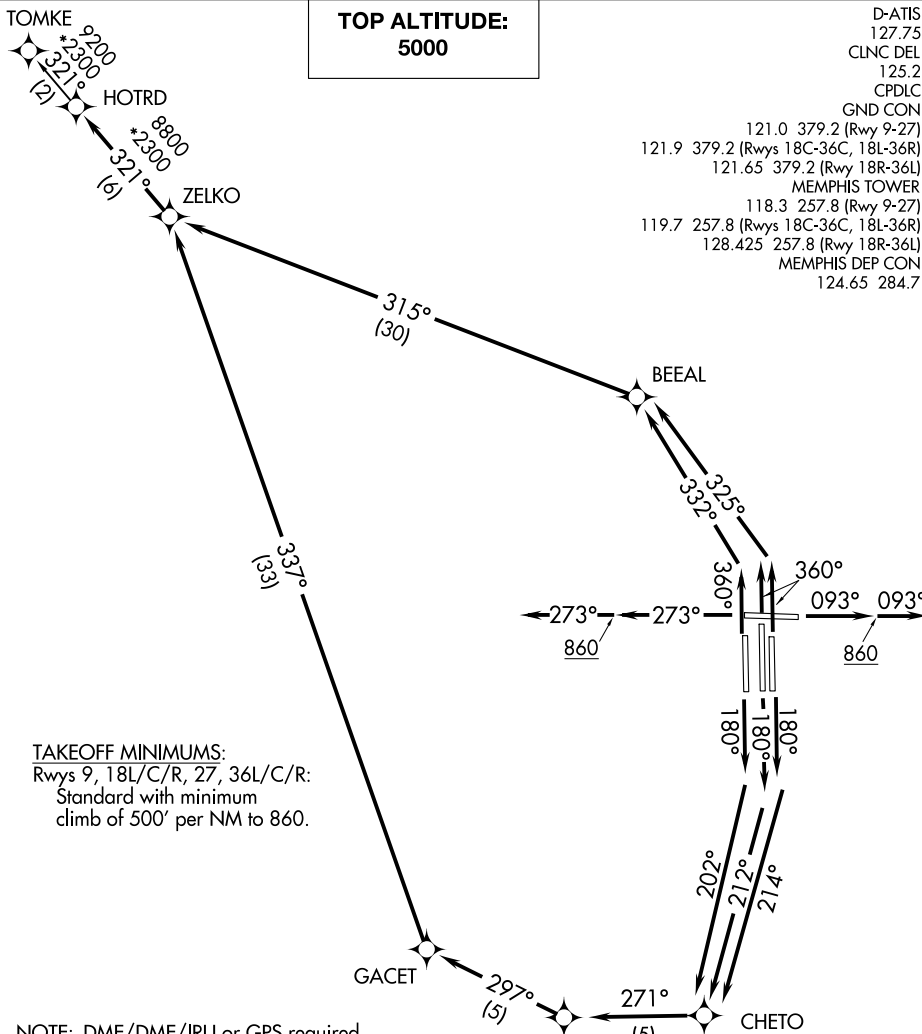


HOTRD FIVE DEPARTURE (RNAV)

MEMPHIS, TENNESSEE

TOP ALTITUDE:
5000

D-ATIS
127.75
CLNC DEL
125.2
CPDLC
GND CON
121.0 379.2 (Rwy 9-27)
121.9 379.2 (Rwys 18C-36C, 18L-36R)
121.65 379.2 (Rwy 18R-36L)
MEMPHIS TOWER
118.3 257.8 (Rwy 9-27)
119.7 257.8 (Rwys 18C-36C, 18L-36R)
128.425 257.8 (Rwy 18R-36L)
MEMPHIS DEP CON
124.65 284.7



TAKEOFF MINIMUMS:

Rwys 9, 18L/C/R, 27, 36L/C/R:

Standard with minimum
climb of 500' per NM to 860.

NOTE: DME/DME/IRU or GPS required.

NOTE: RNAV 1.

NOTE: Turbojets only.

NOTE: Takeoff Rwys 18L/C/R, 36L/C/R: Radar required
for non-GPS equipped aircraft.

NOTE: Takeoff Rwys 9, 27: Radar required.

NOTE: Transponder code will be issued via PDC or Memphis
clearance delivery.

NOTE: Procedure authorized 0200-0600 local only.

NOTE: Accelerate to 250K, reaching 10000 MSL, maintain
250K or greater, if unable advise ATC.

NOTE: If unable to accept climb rates, advise ATC on initial contact.

(NARRATIVE ON FOLLOWING PAGE)

NOTE: Chart not to scale.

HOTRD FIVE DEPARTURE (RNAV)

MEMPHIS, TENNESSEE

SE-1, 02 DEC 2021 to 30 DEC 2021

SE-1, 02 DEC 2021 to 30 DEC 2021