

LOC/DME I-OHN 108.9 Chan 26	APP CRS 360°	Rwy Idg 9320 TDZE 321 Apt Elev 341
---	------------------------	---

ILS RWY 36L (CAT II & III)

MEMPHIS INTL (MEM)

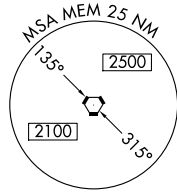
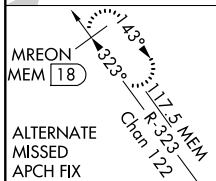
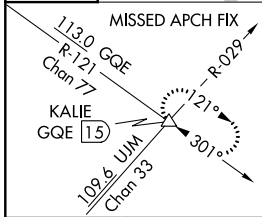
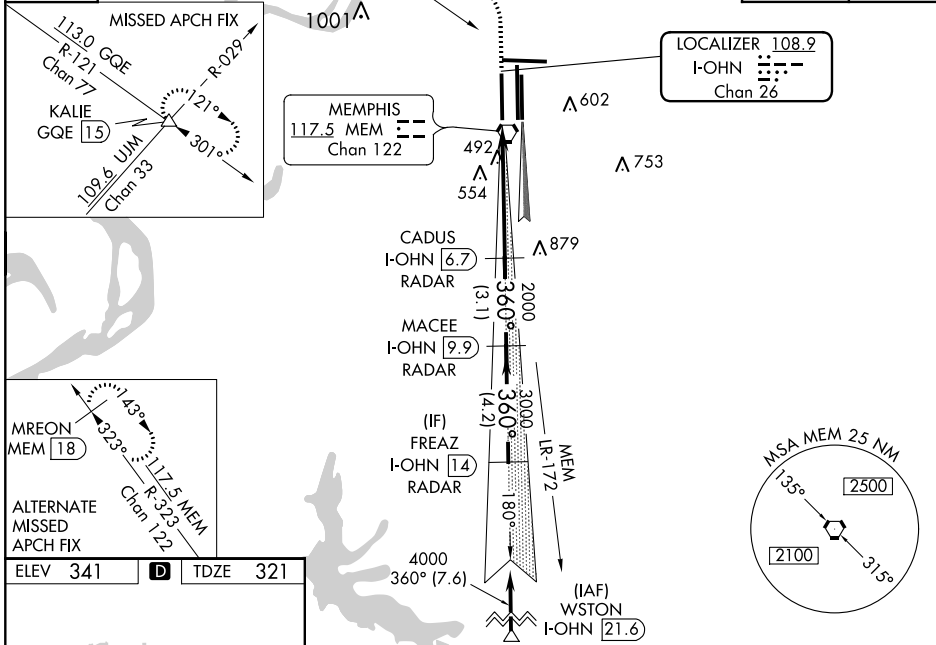
Simultaneous approach authorized with Rwy 36C/R.
DME or RADAR required.



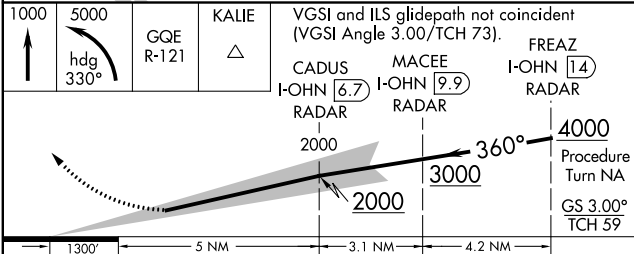
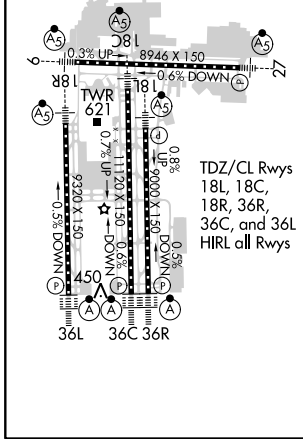
MISSED APPROACH: Climb to 1000 then climbing left turn to 5000 via heading 330° and GQE VOR/DME R-121 to KALIE INT/GQE 15 DME and hold, continue climb-in-hold to 5000.

MEMPHIS APP CON 119.1 291.6 (176°-355°) 125.8 338.3 (356°-175°)	MEMPHIS TOWER (Rwy 9-27) 118.3 257.8 (Rwys 18C-36C, 18L-36R) 119.7 257.8 (Rwy 18R-36L) 128.425 257.8	GND CON (Rwy 9-27) 121.0 379.2 (Rwys 18C-36C, 18L-36R) 121.9 379.2 (Rwy 18R-36L) 121.65 379.2
---	--	---

D-ATIS 127.75	113.0 GQE --- R-121 Chan 77	R-121 Λ 720	CLNC DEL 125.2	CPDLC
-------------------------	--------------------------------	----------------	--------------------------	-------



ELEV 341	D	TDZE 321
-----------------	----------	-----------------



CATEGORY	A	B	C	D
S-ILS 36L	CAT II RA 100/12 100 DA 421			
S-ILS 36L	CAT IIIa RVR 07		RVR 07	
S-ILS 36L	CAT IIIb RVR 03		RVR 03	
S-ILS 36L	CAT IIIc NA		NA	

CATEGORY II & III ILS - SPECIAL AIRCREW & AIRCRAFT CERTIFICATION REQUIRED

SE-1, 02 DEC 2021 to 30 DEC 2021

SE-1, 02 DEC 2021 to 30 DEC 2021