

LOC I-SDU <b>111.95</b>	APP CRS <b>180°</b>	Rwy ldg TDZE Apt Elev	<b>11120</b> <b>290</b> <b>341</b>
----------------------------	------------------------	-----------------------------	--

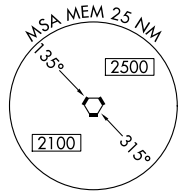
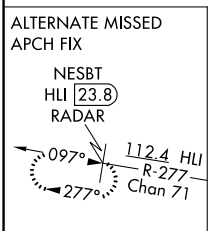
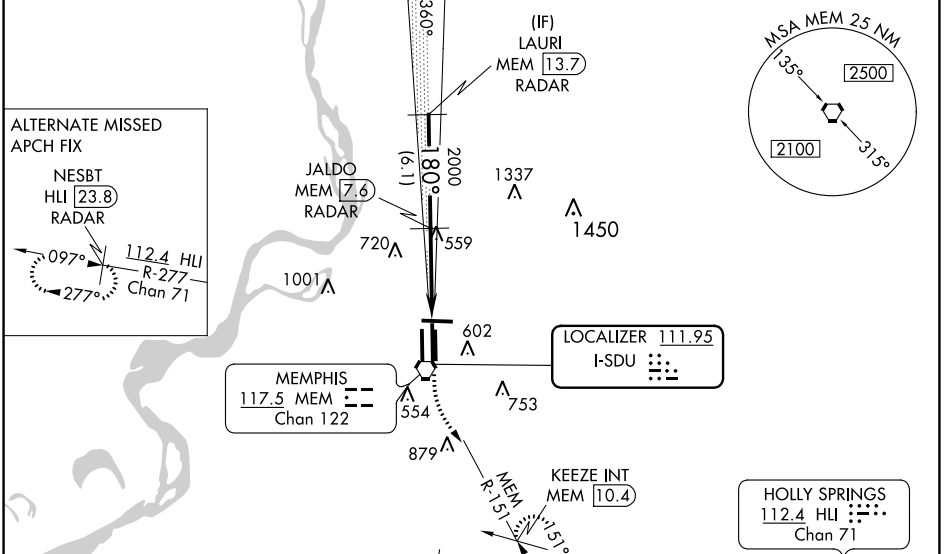
# ILS or LOC RWY 18C

MEMPHIS INTL (MEM)

**Simultaneous approach authorized.**  
**DME or RADAR required.**  
 For inop ALS, increase S-ILS 18C all Cats visibility to 1½ SM.  
**MALS**  
**MISSED APPROACH:** Climb to 900 then climbing left turn to 5000 on MEM VORTAC R-151 to KEEZE INT/MEM 10.4 DME and hold, continue climb-in-hold to 5000.

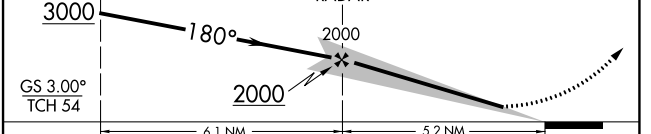
MEMPHIS APP CON <b>119.1 291.6</b> (176°-355°) <b>125.8 338.3</b> (356°-175°)	MEMPHIS TOWER (Rwy 9-27) <b>118.3 257.8</b> (Rwys 18C-36C, 18L-36R) <b>119.7 257.8</b> (Rwy 18R-36L) <b>128.425 257.8</b>	GND CON (Rwy 9-27) <b>121.0 379.2</b> (Rwys 18C-36C, 18L-36R) <b>121.9 379.2</b> (Rwy 18R-36L) <b>121.65 379.2</b>
---	--	---

D-ATIS <b>127.75</b>	CLNC DEL <b>125.2</b>	CPDLC
-------------------------	--------------------------	-------



ELEV 341	<b>D</b>	TDZE 290
----------	----------	----------

180° 5.2 NM from FAF



CATEGORY	A	B	C	D	E
S-ILS 18C	657/40 367 (400-¾)				
S-LOC 18C	860/24	570 (600-½)	860/50 570 (600-1)	860/60 570 (600-1¼)	860-1½ 570 (600-1½)
<b>C</b> CIRCLING	940-1	599 (600-1)	940-1½ 599 (600-1½)	1020-2¼ 679 (700-2¼)	1140-2¾ 799 (800-2¾)

FAF to MAP 5.2 NM					
Knots	60	90	120	150	180
Min:Sec	5:12	3:28	2:36	2:05	1:44

SE-1, 02 DEC 2021 to 30 DEC 2021

SE-1, 02 DEC 2021 to 30 DEC 2021