


LOC/DME I-EXS 111.15	APP CRS 180°	Rwy Idg TDZE Apt Elev	9000 301 341
Chan 48(Y)			

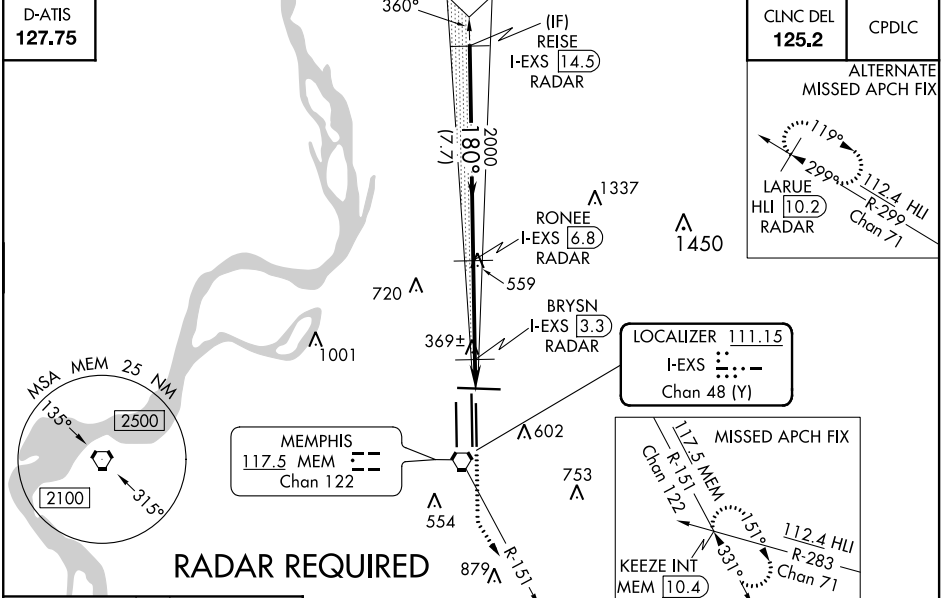
ILS or LOC RWY 18L

MEMPHIS INTL (MEM)

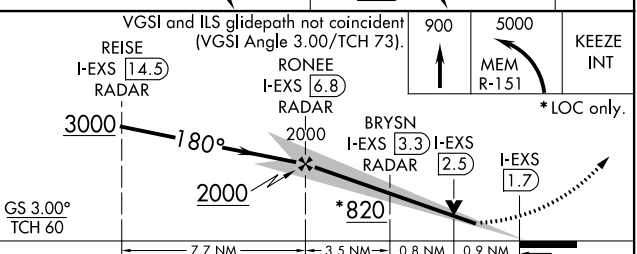
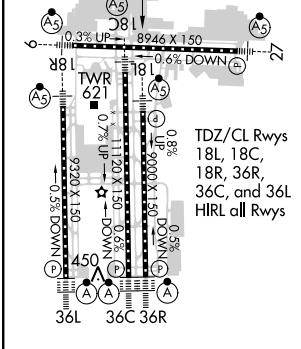
⚠ Simultaneous approach authorized. DME or RADAR required. For inop ALS, increase S-ILS 18L Cat E visibility to RVR 4000, S-LOC 18L Cat E visibility to 1 3/4 SM, BRYSN fix minimums, increase S-LOC 18L Cats D and E visibility to RVR 5000.

MALSR  MISSED APPROACH: Climb to 900 then climbing left turn to 5000 on MEM VORTAC R-151 to KEEZE INT/MEM 10.4 DME and hold, continue climb-in-hold to 5000.

MEMPHIS APP CON	MEMPHIS TOWER	GND CON
119.1 291.6 (176°-355°)	(Rwy 9-27) 118.3 257.8	(Rwy 9-27) 121.0 379.2
125.8 338.3 (356°-175°)	(Rwys 18C-36C, 18L-36R) 119.7 257.8	(Rwys 18C-36C, 18L-36R) 121.9 379.2
	(Rwy 18R-36L) 128.425 257.8	(Rwy 18R-36L) 121.65 379.2



ELEV 341	TDZE 301
180° 5.2 NM from FAF	



CATEGORY	A	B	C	D	E
S-ILS 18L	501/18 200 (200-1/2)		501/24 200 (200-1/2)		
S-LOC 18L	820/24 519 (500-1/2)	820/50 519 (500-1)	820/60 519 (500-1 1/4)		
C CIRCLING	940-1 599 (600-1)	940-1 1/2 599 (600-1 1/2)	1020-2 1/4 679 (700-2 1/4)	1140-2 3/4 799 (800-2 3/4)	
BRYSN FIX MINIMUMS					
S-LOC 18L	620/24 319 (300-1/2)	620/40 319 (300-3/4)			
C CIRCLING	940-1 599 (600-1)	940-1 1/2 599 (600-1 1/2)	1020-2 1/4 679 (700-2 1/4)	1140-2 3/4 799 (800-2 3/4)	

FAF to MAP 5.2 NM					
Knots	60	90	120	150	180
Min:Sec	5:12	3:28	2:36	2:05	1:44

SE-1, 02 DEC 2021 to 30 DEC 2021

SE-1, 02 DEC 2021 to 30 DEC 2021