

LOC I-JIM 108.7	APP CRS 273°	Rwy Idg TDZE Apt Elev 8946 292 341
---------------------------	------------------------	--

ILS or LOC RWY 27

MEMPHIS INTL (MEM)

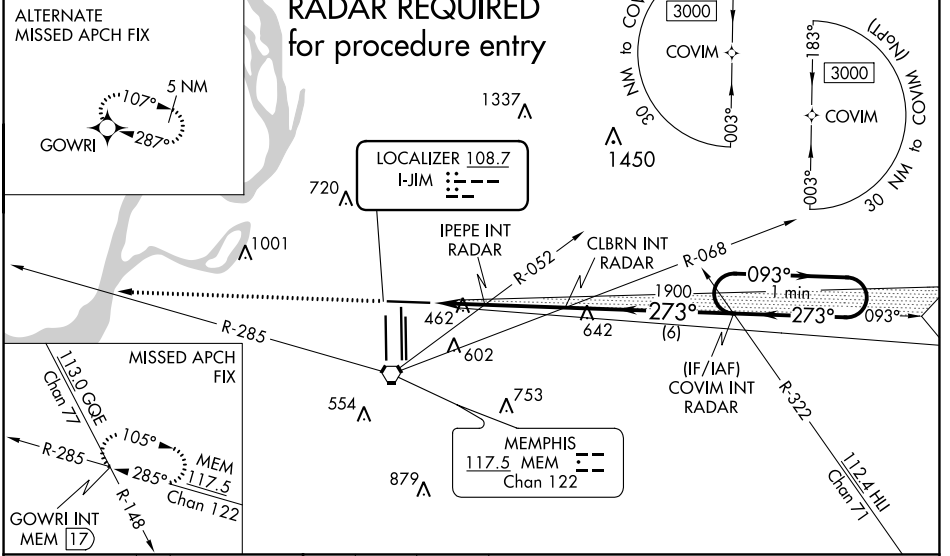
▼ For inop ALS, increase S-ILS Cat E visibility to RVR 4000, and S-LOC Cat E visibility to 2 SM, IPEPE fix minimums S-LOC Cat E visibility to 1½ SM.
**RVR 1800 authorized with use of FD or AP or HUD to DA.

MALSRL MISSED APPROACH: Climb 5000 and intercept MEM VORTAC R-285 to GOWRI INT/17 DME and hold, continue climb-in-hold to 5000.

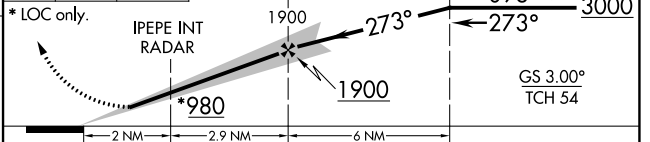
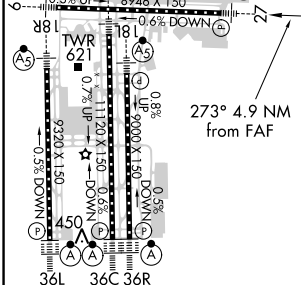
MEMPHIS APP CON 119.1 291.6 (176°-355°) 125.8 338.3 (356°-175°)	MEMPHIS TOWER (Rwy 9-27) 118.3 257.8 (Rwys 18C-36C, 18L-36R) 119.7 257.8 (Rwy 18R-36L) 128.425 257.8	GND CON (Rwy 9-27) 121.0 379.2 (Rwys 18C-36C, 18L-36R) 121.9 379.2 (Rwy 18R-36L) 121.65 379.2
---	--	---

D-ATIS 127.75	CLNC DEL 125.2	CPDLC
-------------------------	--------------------------	-------

RNAV 1-GPS or RADAR REQUIRED for procedure entry



ELEV 341	TDZE 292	5000	MEM R-285	GOWRI INT	CLBRN INT RADAR	COVIM INT RADAR	One Minute Holding Pattern
-----------------	-----------------	------	-----------	-----------	-----------------	-----------------	----------------------------



HIRL all Rwys TDZ/CL Rwys 18L, 18C, 18R, 36R, 36C, and 36L	FAF to MAP 4.9 NM	36L	36C	36R	
Knots	60	90	120	150	180
Min:Sec	4:54	3:16	2:27	1:58	1:38
CATEGORY	A	B	C	D	E
S-ILS 27 **	492/24 200 (200-½)				
S-LOC 27	980/24	688 (700-½)	980-1½ 688 (700-1½)		
C CIRCLING	980-1	639 (700-1)	980-2	1020-2¼	1140-2¾
IPEPE FIX MINIMUMS (DUAL VOR RECEIVERS OR RADAR REQUIRED)					
S-LOC 27	720/24	428 (400-½)	720/40 428 (400-¾)		
C CIRCLING	940-1	599 (600-1)	940-1½	1020-2¼	1140-2¾
599 (600-1½) 679 (700-2¼) 799 (800-2¾)					

SE-1, 02 DEC 2021 to 30 DEC 2021

SE-1, 02 DEC 2021 to 30 DEC 2021