

SE-1, 02 DEC 2021 to 30 DEC 2021

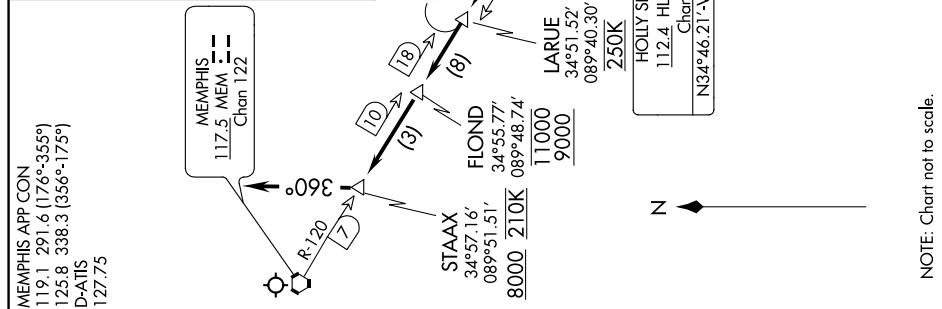
**ARRIVAL ROUTE DESCRIPTION**

**CHOO CHOO TRANSITION (GQO.LUGOH3):** From over GQO VORTAC on GQO R-262 and RQZ R-080 to RQZ VORTAC, then on RQZ R-261 and MSL R-081 to MSL VORTAC, then on MSL R-266 to CRAMM, then on HLI R-102 to LUGOH, thence....  
**TUPELO TRANSITION (OTB.LUGOH3):** From over OTB VOR/DME on OTB R-323 to LUGOH, thence....

**LANDING NORTH:** From over LUGOH on HLI R-102 to cross MASHH at 10000 and 230K, then on heading 270°, expect RADAR vectors to final approach course.  
**LANDING SOUTH:** From over LUGOH on HLI R-102 to cross MASHH at or above 14000 and at or below 16000, then on HLI R-102 to HLI, then on MEM R-120 to cross LARUE at 250K, then on MEM R-120 to cross FLOUND at or above 9000 and at or below 11000, then on MEM R-120 to cross STAXX at or above 8000 and at 210K, then on heading 360°, expect RADAR vectors to final approach course.

MEMPHIS APP CON  
 119.1 291.6 (176°-355°)  
 125.8 338.3 (356°-175°)  
 D-ATIS  
 127.75

MEMPHIS  
 117.5 MEM  
 Chan 122



CHOO CHOO  
 115.8 GQO  
 Chan 105  
 N34°57.68'-W85°09.20'  
 L-25, H-9-12

MUSCLE SHOALS  
 116.5 MSL  
 Chan 112  
 N34°42.41'-W87°29.49'

ROCKET  
 112.2 RQZ  
 Chan 59  
 N34°47.83'-W86°38.03'

TUPELO  
 109.8 OTB  
 Chan 35  
 N34°13.43'-W88°47.84'  
 L-18

- NOTE: DME and RADAR required.
- NOTE: Procedure not available for RNAV capable turbojets.
- NOTE: RNAV capable turbojets must file the VANZE RNAV STAR.
- NOTE: Maintain last assigned altitude until cleared to "descend via the LUGOH THREE," then comply with altitude restrictions as published.

SE-1, 02 DEC 2021 to 30 DEC 2021