

# MONAA THREE ARRIVAL (RNAV)

SE-1, 02 DEC 2021 to 30 DEC 2021

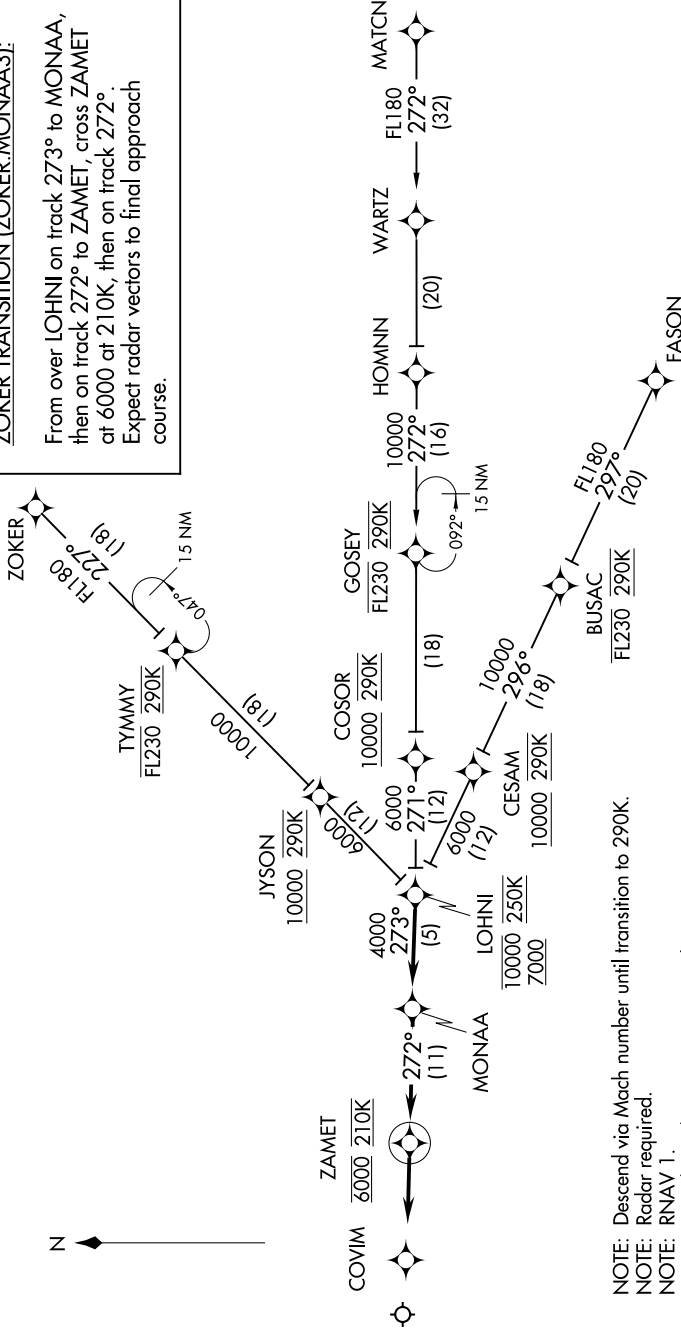
MEMPHIS APP CON  
119.1 291.6 (176°-355°)  
125.8 338.3 (356°-175°)  
D-ATIS  
127.75



## ARRIVAL ROUTE DESCRIPTION

FASON TRANSITION (FASON.MONAA3):  
HOMNN TRANSITION (HOMNN.MONAA3):  
MATCHN TRANSITION (MATCHN.MONAA3):  
ZOKER TRANSITION (ZOKER.MONAA3):

From over LOHNI on track 273° to MONAA,  
then on track 272° to ZAMET, cross ZAMET  
at 6000 at 210K, then on track 272°.  
Expect radar vectors to final approach  
course.



- NOTE: Descend via Mach number until transition to 290K.
- NOTE: Radar required.
- NOTE: RNAV 1.
- NOTE: DME/DME/IRU or GPS required.
- NOTE: Turbojet aircraft only.
- NOTE: Assigned by ATC only.

NOTE: Chart not to scale.

SE-1, 02 DEC 2021 to 30 DEC 2021

# MONAA THREE ARRIVAL (RNAV)

(MONAA.MONAA3) 01FEB18