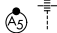


APP CRS <b>180°</b>	Rwy Idg <b>9320</b>
	TDZE <b>295</b>
	Apt Elev <b>341</b>

# RNAV (RNP) X RWY 18R

MEMPHIS INTL (MEM)

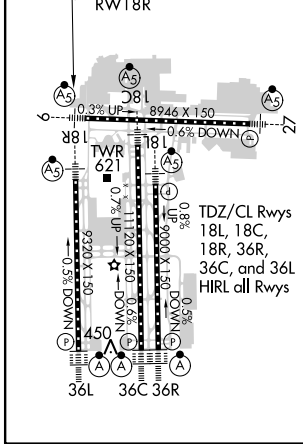
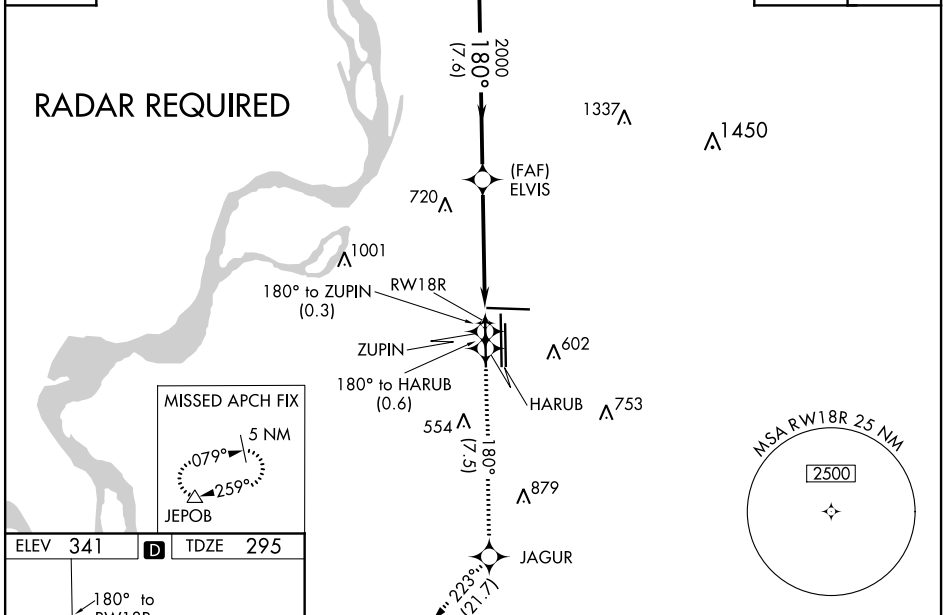
**▽** For uncompensated Baro-VNAV systems, procedure NA below -9°C (16°F) or above 48°C (118°F). Simultaneous approach authorized. GPS required. Missed approach requires RNP less than 1.0. Use of FD or AP required during simultaneous operations.

**MALSR**  
  
**MISSED APPROACH:** Climb to 5000 on track 180° to ZUPIN and on track 180° to HARUB and on track 180° to JAGUR and on track 223° to JEPOB and hold.

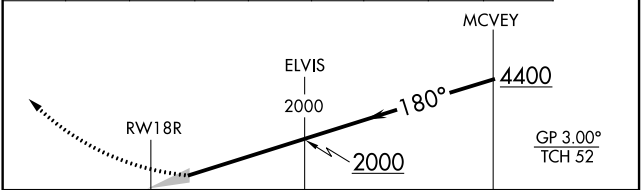
MEMPHIS APP CON <b>119.1 291.6</b> (176°-355°) <b>125.8 338.3</b> (356°-175°)	MEMPHIS TOWER <b>118.3 257.8</b> (Rwy 9-27) <b>119.7 257.8</b> (Rwys 18C-36C, 18L-36R) <b>128.425 257.8</b> (Rwy 18R-36L)	GND CON <b>121.0 379.2</b> (Rwy 9-27) <b>121.9 379.2</b> (Rwys 18C-36C, 18L-36R) <b>121.65 379.2</b> (Rwy 18R-36L)
---	--	---

D-ATIS  
**127.75**

CLNC DEL  
**125.2** CPDLC



5000	↑	tr 180°	ZUPIN	tr 180°	HARUB	tr 180°	JAGUR	tr 223°	JEPOB
------	---	---------	-------	---------	-------	---------	-------	---------	-------



CATEGORY	A	B	C	D
RNP 0.14 DA	737/45 442 (400-7/8)			

**AUTHORIZATION REQUIRED**

SE-1, 02 DEC 2021 to 30 DEC 2021

SE-1, 02 DEC 2021 to 30 DEC 2021