


RNAV (RNP) Y RWY 18C

MEMPHIS INTL (MEM)

| | | |
|-------------|----------|--------------|
| APP CRS | Rwy Idg | 11120 |
| 180° | TDZE | 290 |
| | Apt Elev | 341 |

▽ For uncompensated Baro-VNAV systems, procedure NA below -10°C (14°F) or above 54°C (130°F). GPS required. For inop ALS, increase RNP 0.30* all Cats visibility to 1½ SM and RNP 0.30 all Cats visibility to 1½ SM. Simultaneous approach authorized. Use of FD or AP required during simultaneous operations.

MALSR

MISSED APPROACH: Climb to 5000 on track 180° to CEDEN on track 137° to KEEZE and hold, continue climb-in-hold to 5000. *Missed approach requires a minimum climb of 400 feet per NM to 1000.

MEMPHIS APP CON

| | |
|--------------------|-------------|
| 119.1 291.6 | (176°-355°) |
| 125.8 338.3 | (356°-175°) |

MEMPHIS TOWER

| | |
|-------------------------|----------------------|
| (Rwy 9-27) | 118.3 257.8 |
| (Rwys 18C-36C, 18L-36R) | 119.7 257.8 |
| (Rwy 18R-36L) | 128.425 257.8 |

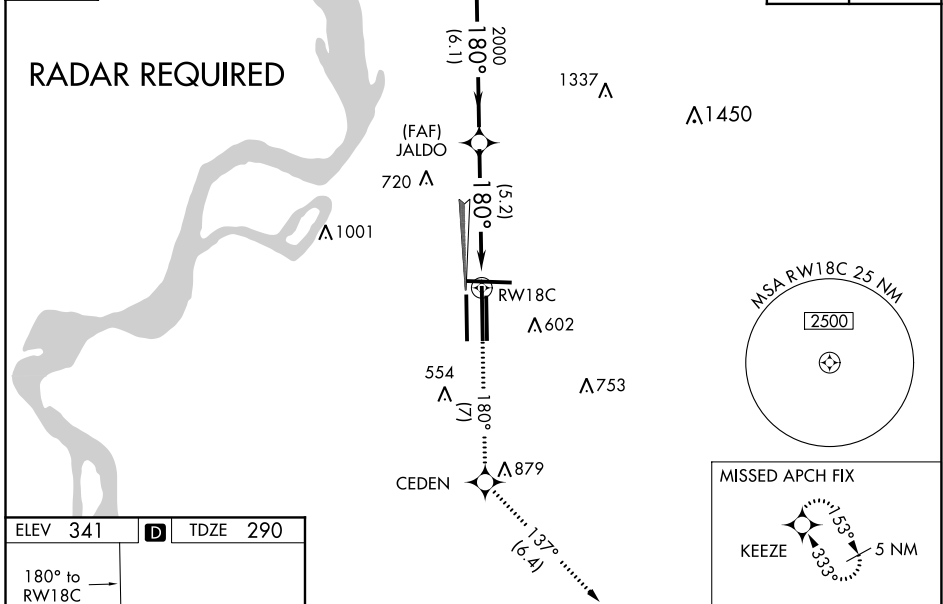
GND CON

| | |
|-------------------------|---------------------|
| (Rwy 9-27) | 121.0 379.2 |
| (Rwys 18C-36C, 18L-36R) | 121.9 379.2 |
| (Rwy 18R-36L) | 121.65 379.2 |

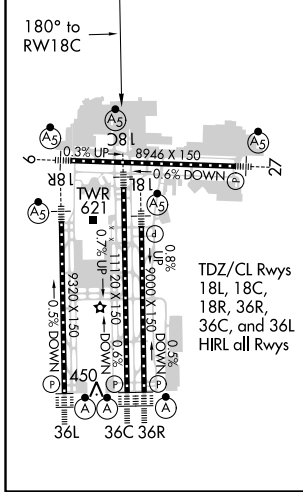
D-ATIS

127.75

| | |
|--------------|-------|
| CLNC DEL | CPDLC |
| 125.2 | |



| | | |
|----------|----------|----------|
| ELEV 341 | D | TDZE 290 |
|----------|----------|----------|



| | | | | | | |
|--------------|---|---------|-------------|---------|--------|-----------------|
| 5000 | ↑ | tr 180° | CEDEN | tr 137° | KEEZE | LAURI |
| | | | JALDO | | | 3900 |
| | | | RWY 18C | 2000 | 2000 | |
| | | | | 5.2 NM | 6.1 NM | |
| | | | | | | GP 3.00° TCH 54 |
| CATEGORY | A | B | C | D | | |
| RNP 0.30 DA* | | 655/35 | 365 (400-%) | | | |
| RNP 0.30 DA | | 747/54 | 457 (500-1) | | | |

AUTHORIZATION REQUIRED

SE-1, 02 DEC 2021 to 30 DEC 2021

SE-1, 02 DEC 2021 to 30 DEC 2021