


# RNAV (RNP) Y RWY 18L

MEMPHIS INTL (MEM)

APP CRS	Rwy Idg	<b>9000</b>
<b>180°</b>	TDZE	<b>301</b>
	Apt Elev	<b>341</b>

**▼** For uncompensated Baro-VNAV systems, procedure NA below -9°C (16°F) or above 48°C (118 °F). GPS required. Simultaneous approach authorized. For Inop ALS, increase RNP 0.30 \*all Cats visibility to RVR 6000 and RNP 0.30 all Cats visibility to 1¼ SM.

**MALSR**  
  
**MISSED APPROACH:** Climb to 5000 on track 180° to PENLE and on track 136° to KEEZE and hold, continue climb-in-hold to 5000. \*Missed approach requires minimum climb of 400 feet per NM to 1000.

MEMPHIS APP CON

<b>119.1 291.6</b>	(176°-355°)
<b>125.8 338.3</b>	(356°-175°)

MEMPHIS TOWER

(Rwy 9-27)	<b>118.3 257.8</b>
(Rwys 18C-36C, 18L-36R)	<b>119.7 257.8</b>
(Rwy 18R-36L)	<b>128.425 257.8</b>

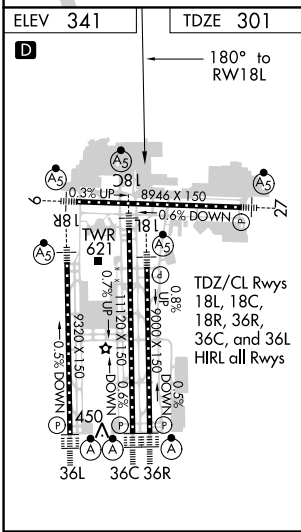
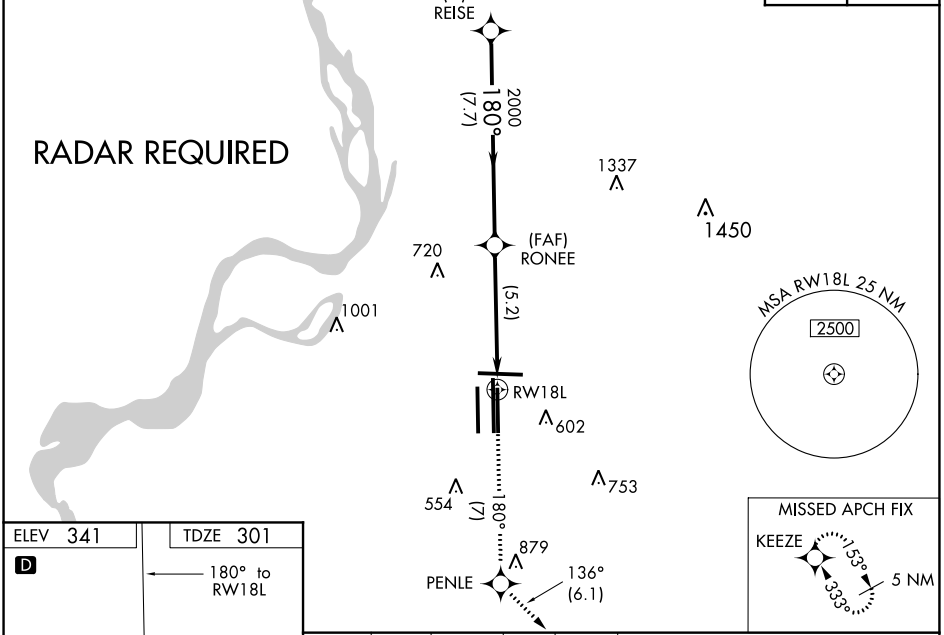
GND CON

(Rwy 9-27)	<b>121.0 379.2</b>
(Rwys 18C-36C, 18L-36R)	<b>121.9 379.2</b>
(Rwy 18R-36L)	<b>121.65 379.2</b>

D-ATIS

<b>127.75</b>
---------------

CLNC DEL	CPDLC
<b>125.2</b>	



5000	↑	tr 180°	PENLE	tr 136°	KEEZE	VGSI and RNAV glidepath not coincident (VGSI Angle 3.00/TCH 73).
			RONEE		REISE	
			RWY 18L	2000	4400	GP 3.00° TCH 60
			5.2 NM	7.7 NM		
CATEGORY	A	B	C	D		
RNP 0.30 DA*		698/50	397 (400-1)			
RNP 0.30 DA		791/60	490 (500-1¼)			

## AUTHORIZATION REQUIRED

SE-1, 02 DEC 2021 to 30 DEC 2021

SE-1, 02 DEC 2021 to 30 DEC 2021