

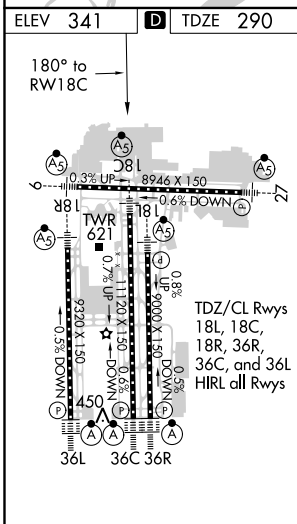
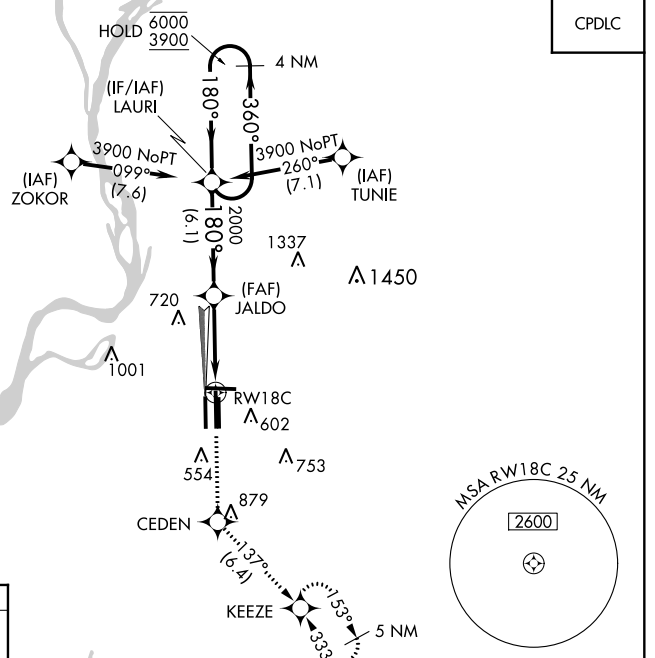
WAAS CH 97507	APP CRS 180°	Rwy Idg TDZE Apt Elev	1120 290 341
-------------------------	------------------------	-----------------------------	-----------------------------------------

RNAV (GPS) Z RWY 18C

MEMPHIS INTL (MEM)

RNP APCH - GPS.		MALSR 	MISSED APPROACH: Climb to 5000 direct CEDEN and on track 137° to KEEZE and hold, continue climb-in-hold to 5000.
Simultaneous approach authorized. For uncompensated Baro-VNAV systems, LNAV/VNAV NA below -15°C or above 54°C. Use of FD or AP required during simultaneous operations. LNAV procedure NA during simultaneous operations. For Inop ALS, increase LPV all Cats visibility to RVR 5500 and LNAV/VNAV all Cats visibility to 1 3/8 SM.			
MEMPHIS APP CON	MEMPHIS TOWER	GND CON	CLNC DEL
119.1 291.6 (176°-355°)	(Rwy 9-27) 118.3 257.8	(Rwy 9-27) 121.0 379.2	125.2
125.8 338.3 (356°-175°)	(Rwys 18C-36C, 18L-36R) 119.7 257.8	(Rwys 18C-36C, 18L-36R) 121.9 379.2	
	(Rwy 18R-36L) 128.425 257.8	(Rwy 18R-36L) 121.65 379.2	

D-ATIS 127.75	CPDLC
-------------------------	-------



5000	CEDEN	tr 137°	KEEZE	4 NM Holding Pattern
RWY 18C 1.7 NM to RWY 18C JALDO 2000 180° 360° 6000 3900 GP 3.00° TCH 54				
1.7 NM 3.5 NM 6.1 NM				
CATEGORY	A	B	C	D
LPV DA	665/35 375 (400-5%)			
LNAV/VNAV DA	782/50 492 (500-1)			
LNAV MDA	880/24	590 (600-1/2)	880-1 1/4	590 (600-1 1/4)
CIRCLING	940-1	599 (600-1)	940-1 3/4	1020-2 1/4 679 (700-2 1/4)

SE-1, 02 DEC 2021 to 30 DEC 2021

SE-1, 02 DEC 2021 to 30 DEC 2021