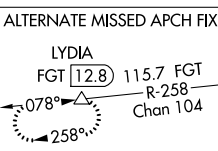
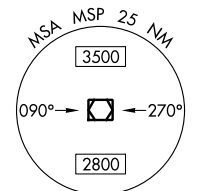
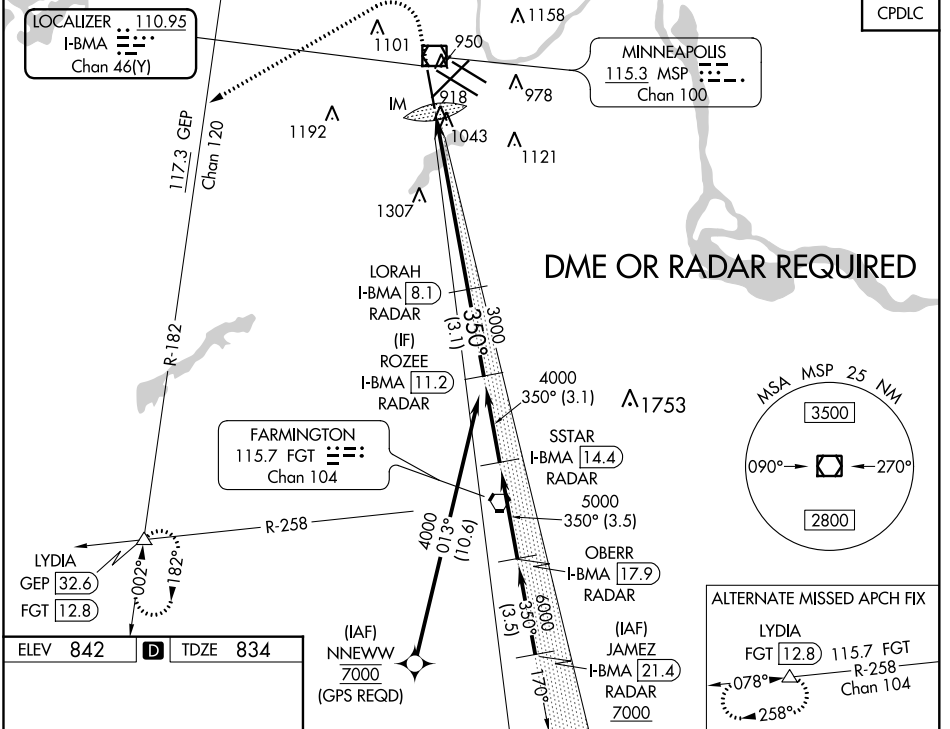


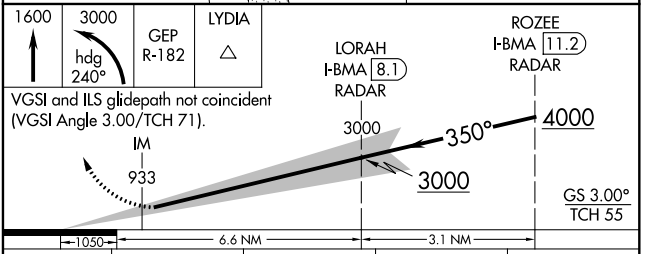
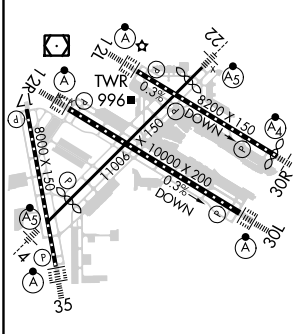
LOC/DME I-BMA <b>110.95</b> Chan <b>46</b> (Y)	APP CRS <b>350°</b>	Rwy ldg TDZE <b>8000 834</b> Apt Elev <b>842</b>
--	------------------------	--

**ILS RWY 35 (CAT II & III)**  
MINNEAPOLIS-ST PAUL INTL/WOLD-CHAMBERLAIN (MSP)

<p><b>DME or RADAR required.</b></p>		<p>ALSF-2</p>	<p><b>MISSED APPROACH:</b> Climb to 1600 then climbing left turn to 3000 on heading 240° and on GEP VORTAC R-182 to LYDIA INT/GEP 32.6 DME and hold.</p>	
D-ATIS ARR <b>135.35 239.275</b> DEP <b>120.8</b>	<p>MINNEAPOLIS APP CON</p> <p><b>118.725 335.65</b> (Rwy 35) <b>119.3 335.65</b> (12L-30R, 4-22, 17) <b>126.95 335.65</b> (12R-30L)</p>	<p>MINNEAPOLIS TOWER</p> <p><b>123.675 273.55</b> (17-35) <b>123.95 273.55</b> (12L-30R) <b>126.7 273.55</b> (12R-30L, 4-22)</p>	GND CON <b>N 121.8 348.6</b> <b>S 121.9 348.6</b> <b>W 127.925 348.6</b>	<p>CLNC DEL</p> <p><b>133.2</b></p>



ELEV 842	D	TDZE 834
----------	---	----------



CATEGORY	A	B	C	D
S-ILS 35	CAT II RA 106/12 110 DA 944			
S-ILS 35	CAT III RVR 06			

**CATEGORY II & III ILS - SPECIAL AIRCREW & AIRCRAFT CERTIFICATION REQUIRED**

HIRL all Rwys  
REIL Rwy 17  
TDZ/CL Rwys 12L, 12R, 30L, and 35