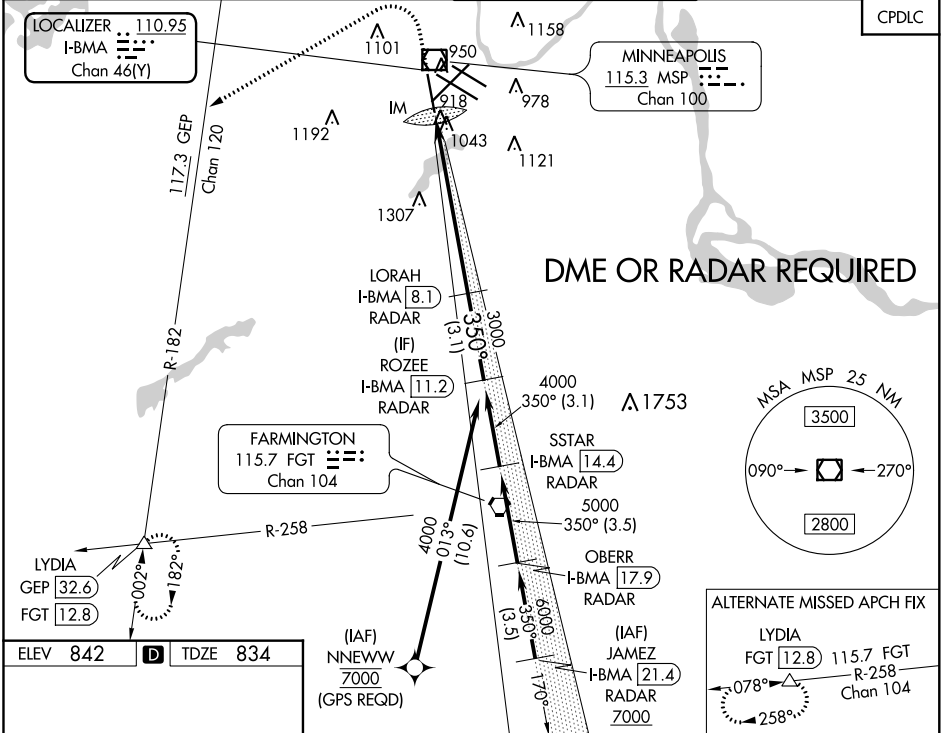


LOC/DME I-BMA 110.95 Chan 46 (Y)	APP CRS 350°	Rwy ldg TDZE Apt Elev	8000 834 842
--	------------------------	-----------------------------	---

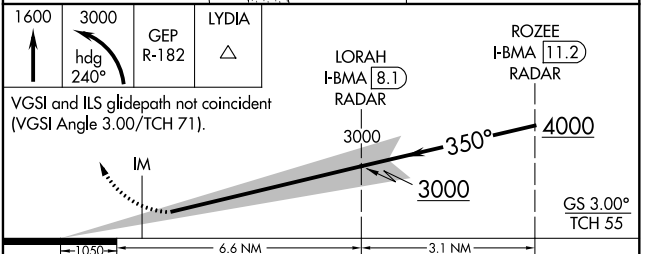
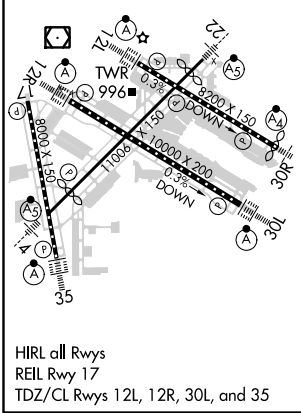
ILS RWY 35 (SA CAT I)

MINNEAPOLIS-ST PAUL INTL/WOLD-CHAMBERLAIN (MSP)

V DME or RADAR required. Requires specific OPSPEC, MSPEC, or LOA approval and use of HUD to DH. A ALSF-2	MISSED APPROACH: Climb to 1600 then climbing left turn to 3000 on heading 240° and on GEP VORTAC R-182 to LYDIA INT/GEP 32.6 DME and hold.			
	D-ATIS ARR 135.35 239.275 DEP 120.8	MINNEAPOLIS APP CON 118.725 335.65 (Rwy 35) 119.3 335.65 (12L-30R, 4-22, 17) 126.95 335.65 (12R-30L)	MINNEAPOLIS TOWER 123.675 273.55 (17-35) 123.95 273.55 (12L-30R) 126.7 273.55 (12R-30L, 4-22)	GND CON N 121.8 348.6 S 121.9 348.6 W 127.925 348.6



ELEV 842	D	TDZE 834
----------	----------	----------



CATEGORY	A	B	C	D
S-ILS 35	RA 157/14 150 DA 984			

SA CATEGORY I ILS - SPECIAL AIRCREW & AIRCRAFT CERTIFICATION REQUIRED

NC-1, 02 DEC 2021 to 30 DEC 2021

NC-1, 02 DEC 2021 to 30 DEC 2021