

LOC/DME I-PJL <b>110.7</b> Chan <b>44</b>	APP CRS <b>121°</b>	Rwy Idg TDZE Apt Elev	<b>7620</b> <b>841</b> <b>842</b>
---	------------------------	-----------------------------	---

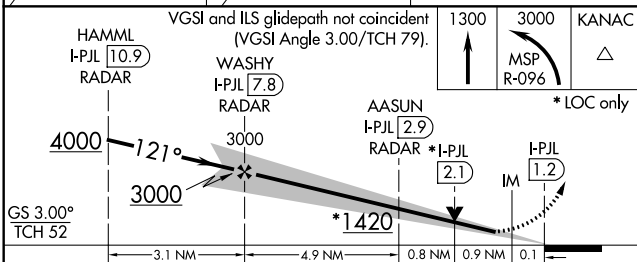
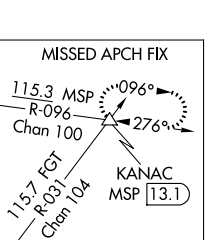
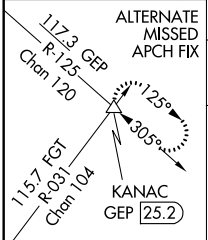
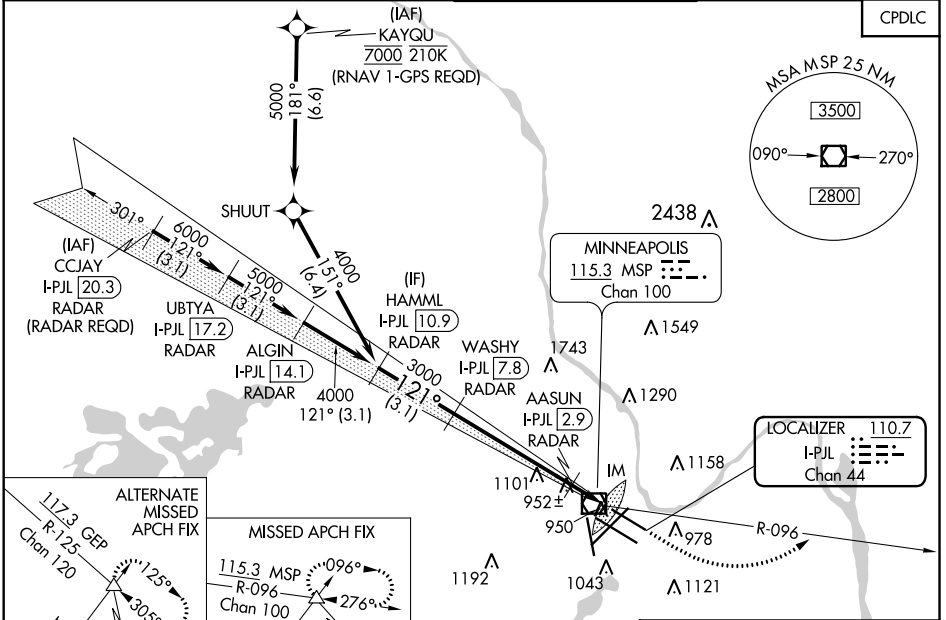
# ILS or LOC RWY 12L

MINNEAPOLIS-ST PAUL INTL/WOLD-CHAMBERLAIN (MSP)

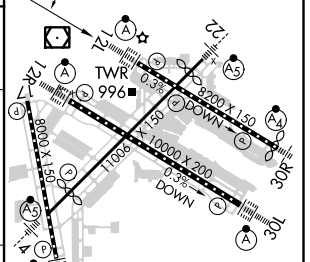
**⚠** Simultaneous approach authorized with Rwy 12R. For inop ALS, increase S-ILS 12L Cat E visibility to RVR 4000, S-LOC 12L Cat C/D/E visibility to RVR 5500. DME or RADAR required.

ALS F-2 MISSED APPROACH: Climb to 1300, then climbing left turn to 3000 on MSP VOR/DME R-096 to KANAC INT/MSP 13.1 DME and hold.

D-ATIS ARR <b>135.35</b> <b>239.275</b> DEP <b>120.8</b>	MINNEAPOLIS APP CON <b>118.725</b> <b>335.65</b> (Rwy 35) <b>119.3</b> <b>335.65</b> (12L-30R, 4-22, 17) <b>126.95</b> <b>335.65</b> (12R-30L)	MINNEAPOLIS TOWER <b>123.675</b> <b>273.55</b> (17-35) <b>123.95</b> <b>273.55</b> (12L-30R) <b>126.7</b> <b>273.55</b> (12R-30L, 4-22)	GND CON <b>N 121.8</b> <b>348.6</b> <b>S 121.9</b> <b>348.6</b> <b>W 127.925</b> <b>348.6</b>	CLNC DEL <b>133.2</b>
--	---	--	--	--------------------------



ELEV 842	TDZE 841
----------	----------



CATEGORY	A	B	C	D	E
S-ILS 12L	1041/18 200 (200-½)				
S-LOC 12L	1220/24	379 (400-½)	1220/35 379 (400-¾)		
CIRCLING	1360-1 518 (600-1)	1460-1¾	1660-2¾	1800-3	
		618 (700-1¾)	818 (900-2¾)	958 (1000-3)	

Knots	60	90	120	150	180
Min:Sec	6:36	4:24	3:18	2:38	2:12

NC-1, 02 DEC 2021 to 30 DEC 2021

NC-1, 02 DEC 2021 to 30 DEC 2021