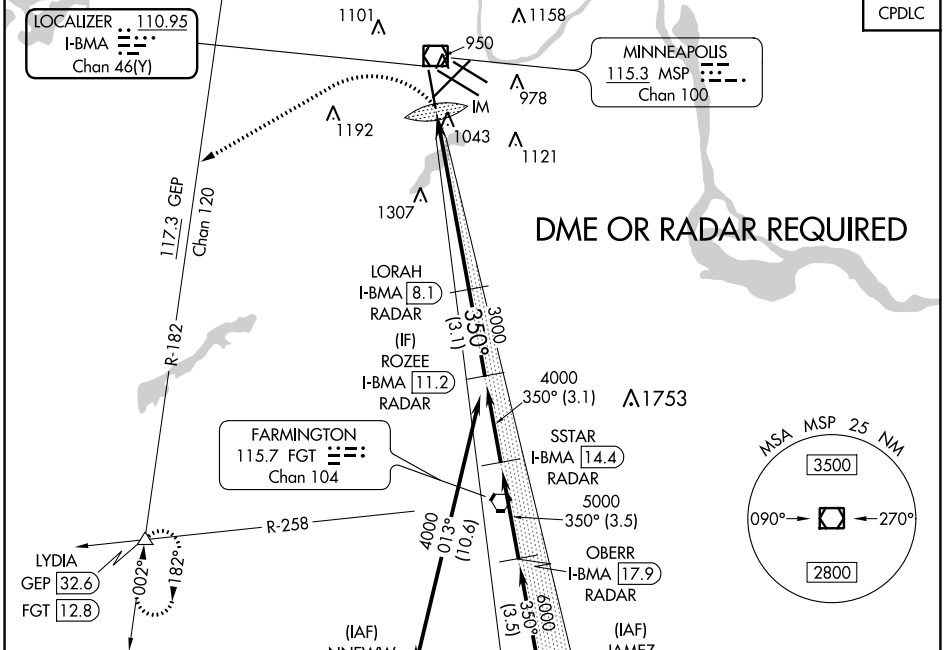


LOC/DME I-BMA 110.95 Chan 46 (Y)	APP CRS 350°	Rwy ldg TDZE Apt Elev	8000 834 842
--	------------------------	-----------------------------	---

ILS V RWY 35 (CONVERGING)
MINNEAPOLIS-ST PAUL INTL/WOLD-CHAMBERLAIN (MSP)

<p>▼ Inop table does not apply. ▲ NA No autoland on ILS V RWY 35 (CONVERGING). Simultaneous approach authorized.</p>	<p>ALSf-2</p>	<p>MISSED APPROACH: Climbing left turn to 3000 on heading 240° and on GEP VORTAC R-182 to LYDIA INT/GEp 32.6 DME and hold.</p>
--	---------------	--

<p>D-ATIS ARR 135.35 239.275 DEP 120.8</p>	<p>MINNEAPOLIS APP CON 118.725 335.65 (Rwy 35) 119.3 335.65 (12L-30R, 4-22, 17) 126.95 335.65 (12R-30L)</p>	<p>MINNEAPOLIS TOWER 123.675 273.55 (17-35) 123.95 273.55 (12L-30R) 126.7 273.55 (12R-30L, 4-22)</p>	<p>GND CON N 121.8 348.6 S 121.9 348.6 W 127.925 348.6</p>	<p>CLNC DEL 133.2</p>
--	--	---	---	----------------------------------

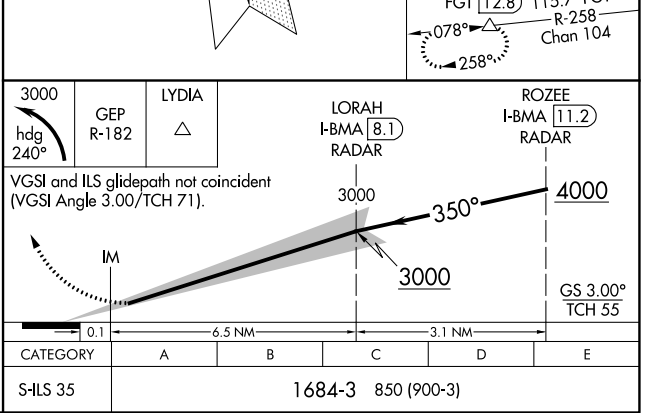
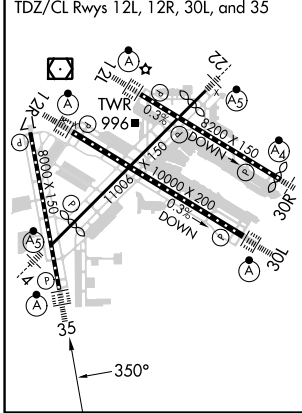


ELEV 842	D	TDZE 834
----------	----------	----------

HIRL all Rwys
REL Rwy 17
TDZ/CL Rwys 12L, 12R, 30L, and 35

(IAF) NNEWW 7000 (GPS REQD)	(IAF) JAMEZ 7000 I-BMA 21.4 RADAR
-----------------------------------	--

ALTERNATE MISSED APCH FIX LYDIA FGT 12.8	115.7 FGT R-258 Chan 104
--	--------------------------------



NC-1, 02 DEC 2021 to 30 DEC 2021

NC-1, 02 DEC 2021 to 30 DEC 2021