

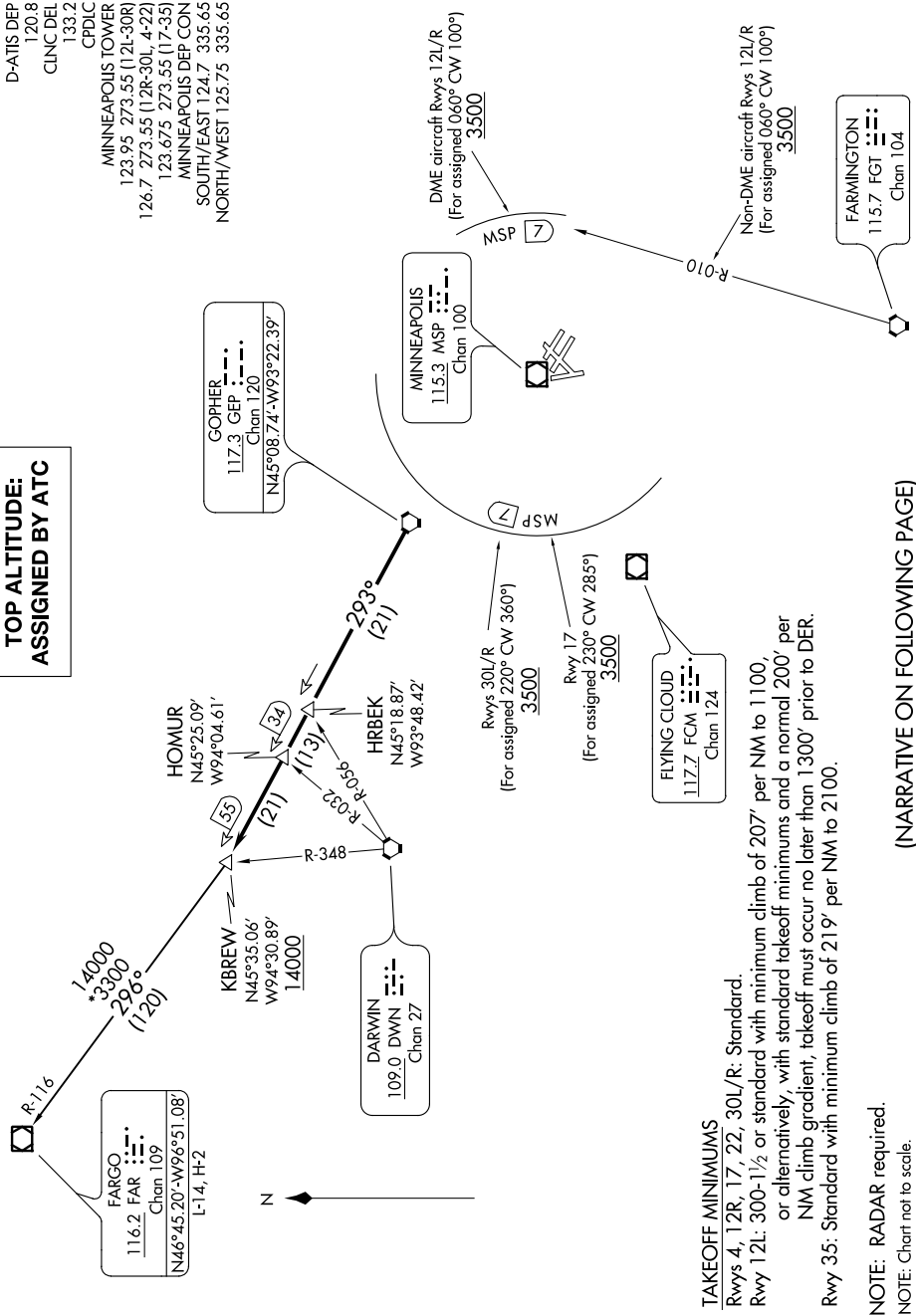
KBREW ONE DEPARTURE

NC-1, 02 DEC 2021 to 30 DEC 2021

TOP ALTITUDE: ASSIGNED BY ATC

D-AITIS DEP
120.8
CLNCDEL
133.2
CPDLC

MINNEAPOLIS TOWER
123.95 273.55 (12L-30R)
126.7 273.55 (12R-30L, 4-22)
123.675 273.55 (17-35)
MINNEAPOLIS DEP CON
SOUTH/EAST 124.7 335.65
NORTH/WEST 125.75 335.65



KBREW ONE DEPARTURE

TAKEOFF MINIMUMS
 Rwy 4: 12R, 17, 22, 30L/R: Standard.
 Rwy 12L: 300-1½ or standard with minimum climb of 207' per NM to 1100,
 or alternatively, with standard takeoff minimums and a normal 200' per
 NM climb gradient, takeoff must occur no later than 1300' prior to DER.
 Rwy 35: Standard with minimum climb of 219' per NM to 2100.

NOTE: RADAR required.
 NOTE: Chart not to scale.

(NARRATIVE ON FOLLOWING PAGE)

NC-1, 02 DEC 2021 to 30 DEC 2021