

ARRIVAL ROUTE DESCRIPTION

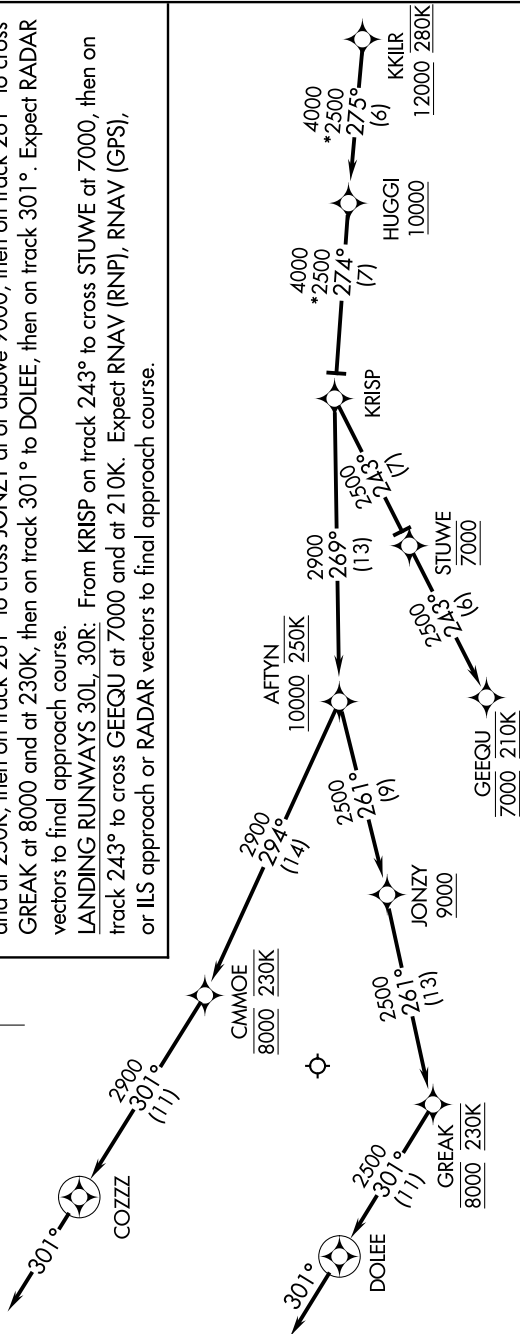
From KKILR on track 275° to cross HUGGI at or above 10000, then on track 274° to KRISP.

LANDING RUNWAYS 4, 12L, 17, 22: From KRISP on track 269° to cross AFTYN at or above 10000 and at 250K, then on track 294° to cross CMMOE at 8000 and at 230K, then on track 301° to COZZZ, then on track 301°. Expect RADAR vectors to final approach course.

LANDING RUNWAYS 12R, 35: From KRISP on track 269° to cross AFTYN at or above 10000 and at 250K, then on track 261° to cross JONZY at or above 9000, then on track 261° to cross GREAK at 8000 and at 230K, then on track 301° to DOLEE, then on track 301°. Expect RADAR vectors to final approach course.

LANDING RUNWAYS 30L, 30R: From KRISP on track 243° to cross STUWE at 7000, then on track 243° to cross GEEQU at 7000 and at 210K. Expect RNAV (RNP), RNAV (GPS), or ILS approach or RADAR vectors to final approach course.

MINNEAPOLIS APP CON  
126.35 335.5  
D-ATIS ARR  
135.35 239.275



NOTE: Expect "descend via" clearance and runway transition assignment by Center.

Approach will assign landing Rwy.

NOTE: Turbojet aircraft descend via Mach number until intercepting 280K. Maintain 280K until slowed by the STAR, or assigned by ATC.

NOTE: DME/DME/IRU or GPS required.

NOTE: For Turbojet aircraft only.

NOTE: RADAR required.

NOTE: RNAV 1.

NOTE: Chart not to scale.