

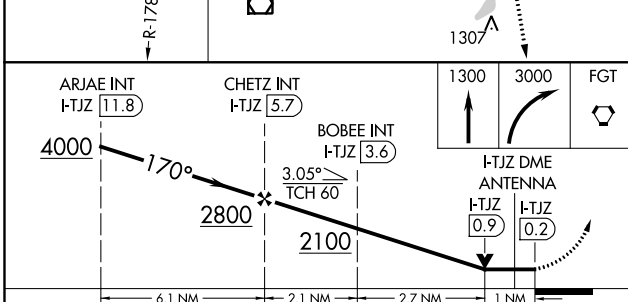
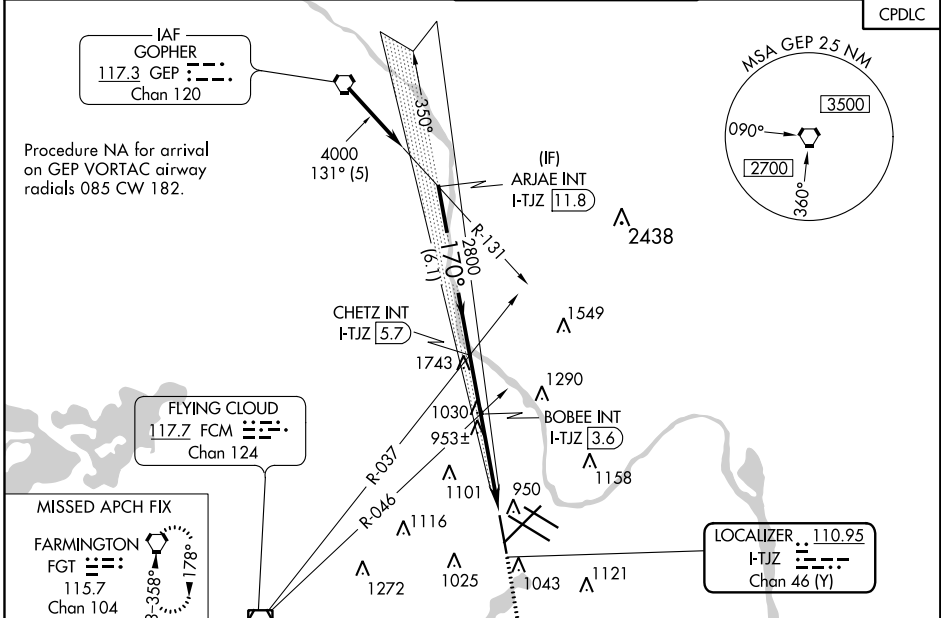
LOC/DME I-TJZ 110.95 Chan 46 (Y)	APP CRS 170°	Rwy Idg 8000 TDZE 840 Apt Elev 842
---	------------------------	---

LOC RWY 17

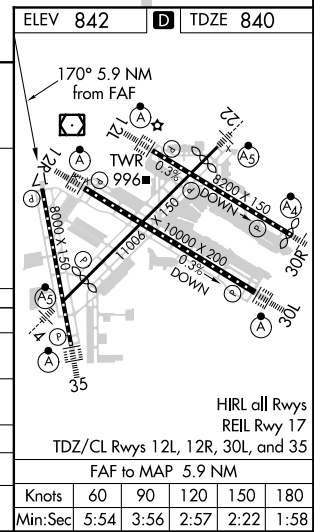
MINNEAPOLIS-ST PAUL INTL/WOLD-CHAMBERLAIN (MSP)

⚠ Helicopter visibility reduction below RVR 4000 NA. MISSED APPROACH: Climb to 1300 then climbing right turn to 3000 direct FGT VORTAC and hold.

D-ATIS ARR 135.35 239.275 DEP 120.8	MINNEAPOLIS APP CON 118.725 335.65 (Rwy 35) 119.3 335.65 (12L-30R, 4-22, 17) 126.95 335.65 (12R-30L)	MINNEAPOLIS TOWER 123.675 273.55 (17-35) 123.95 273.55 (12L-30R) 126.7 273.55 (12R-30L, 4-22)	GND CON N 121.8 348.6 S 121.9 348.6 W 127.925 348.6	CLNC DEL 133.2
---	--	---	---	--------------------------



CATEGORY	A	B	C	D
S-17	2100/60 1260 (1300-1½)	2100-1½ 1260 (1300-1½)	2100-3	1260 (1300-3)
C CIRCLING	2100-1¼ 1258 (1300-1¼)	2100-1½ 1258 (1300-1½)	2100-3	1258 (1300-3)
BOBEE FIX MINIMUMS (DUAL VOR RECEIVERS OR DME REQUIRED)				
S-17	1220/55		380 (400-1)	
C CIRCLING	1360-1	518 (600-1)	1460-1¾ 618 (700-1¾)	1660-2¾ 818 (900-2¾)



LOC RWY 17

NC-1, 02 DEC 2021 to 30 DEC 2021

NC-1, 02 DEC 2021 to 30 DEC 2021