

(NITZR.NITZR3) 18032

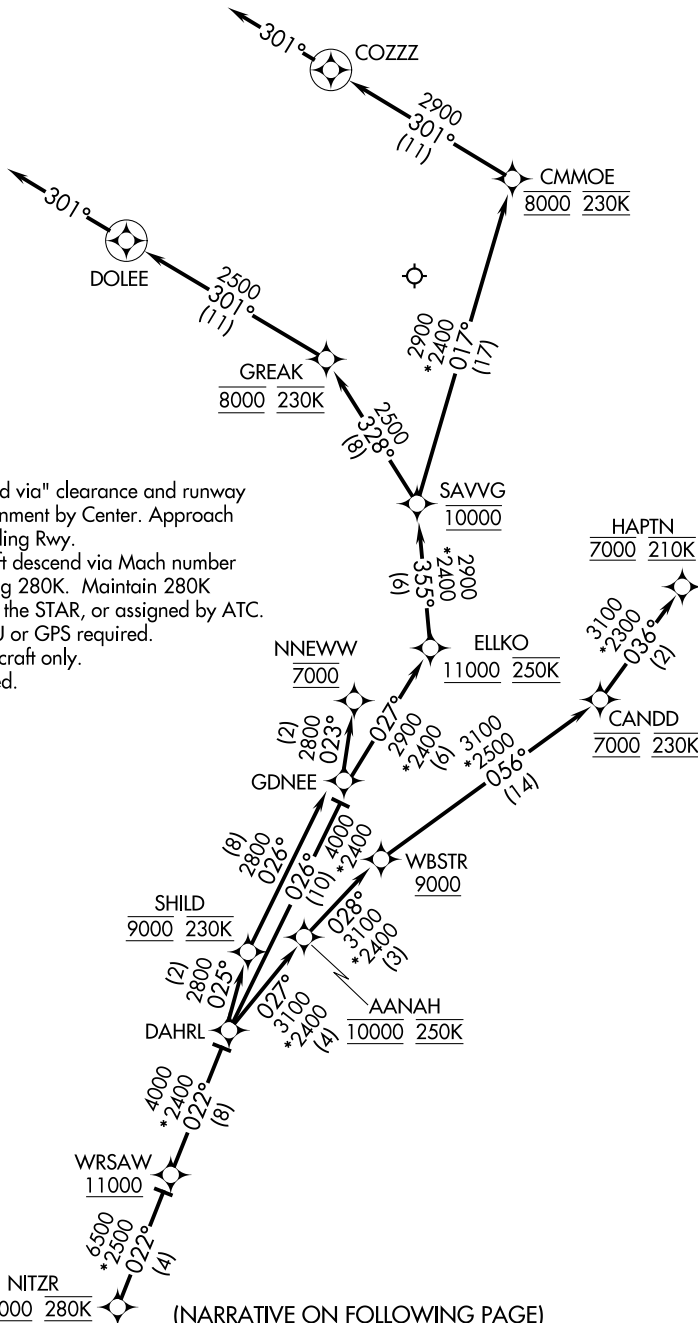
MINNEAPOLIS-ST PAUL INTL/WOLD-CHAMBERLAIN (MSP)

NITZR THREE ARRIVAL (RNAV) Arrival Routes

AI-264 (FAA)

MINNEAPOLIS, MINNESOTA

MINNEAPOLIS APP CON
135.475 335.5
D-ATIS ARR
135.35 239.275



- NOTE: Expect "descend via" clearance and runway transition assignment by Center. Approach will assign landing Rwy.
- NOTE: Turbojet aircraft descend via Mach number until intercepting 280K. Maintain 280K until slowed by the STAR, or assigned by ATC.
- NOTE: DME/DME/IRU or GPS required.
- NOTE: For turbojet aircraft only.
- NOTE: RADAR required.
- NOTE: RNAV 1.

NOTE: Chart not to scale.

(NARRATIVE ON FOLLOWING PAGE)

NITZR THREE ARRIVAL (RNAV) Arrival Routes

MINNEAPOLIS, MINNESOTA

(NITZR.NITZR3) 05JAN17

MINNEAPOLIS-ST PAUL INTL/WOLD-CHAMBERLAIN (MSP)

NC-1, 02 DEC 2021 to 30 DEC 2021

NC-1, 02 DEC 2021 to 30 DEC 2021