

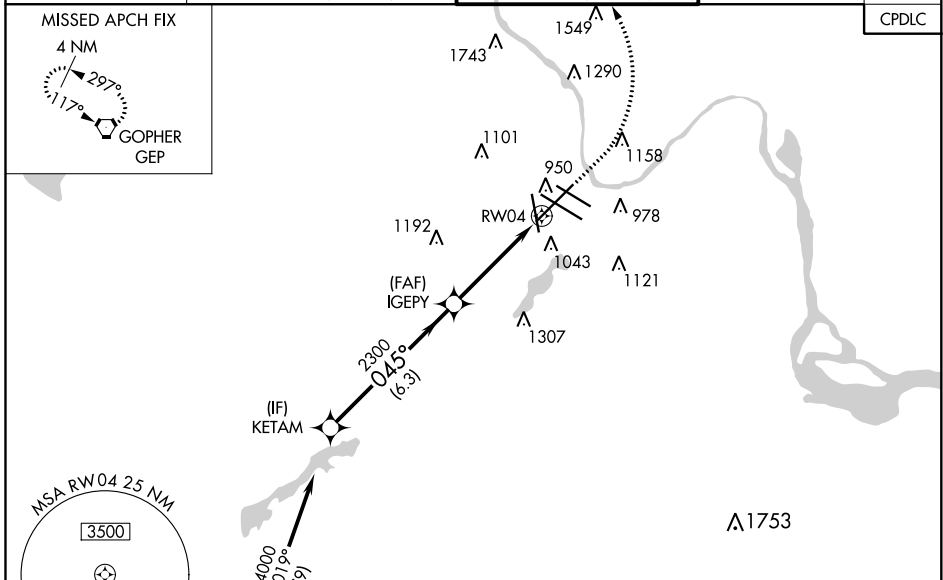
WAAS CH 72931 W04A	APP CRS 045°	Rwy Idg 9456 TDZE 832 Apt Elev 842
--	------------------------	---

RNAV (GPS) RWY 4

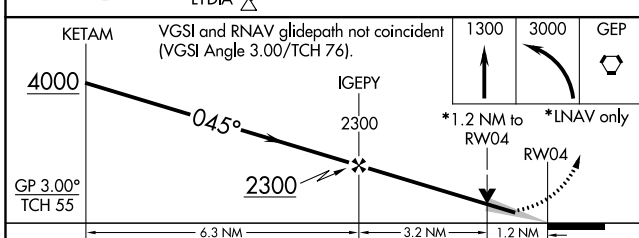
MINNEAPOLIS-ST PAUL INTL/WOLD-CHAMBERLAIN (MSP)

RNP APCH.	MALSRL	MISSED APPROACH: Climb to 1300 then climbing left turn to 3000 direct GEP VORTAC and hold.
<p>▼ For uncompensated Baro-VNAV systems, LNAV/VNAV NA below -19°C or above 54°C. For inop ALS, increase LPV Cat E visibility to RVR 4000, LNAV/VNAV Cat E visibility to 1 3/8 SM, LNAV Cat C/D/E visibility to 1 3/8 SM. #RVR 1800 authorized with use of FD or AP or HUD to DA.</p>		

D-ATIS ARR 135.35 239.275 DEP 120.8	MINNEAPOLIS APP CON 118.725 335.65 (Rwy 35) 119.3 335.65 (12L-30R, 4-22, 17) 126.95 335.65 (12R-30L)	MINNEAPOLIS TOWER 123.675 273.55 (17-35) 123.95 273.55 (1 2L-30R) 126.7 273.55 (12R-30L, 4-22)	GND CON N 121.8 348.6 S 121.9 348.6 W 127.925 348.6	CLNC DEL 133.2
---	--	--	---	--------------------------



Procedure NA for arrivals at LYDIA on V505 southbound and on V26 westbound.



CATEGORY	A	B	C	D	E
LPV DA#	1032/24 200 (200-1/2)				
LNAV/VNAV DA	1281/45 449 (500-7/8)				
LNAV MDA	1300/24 468 (500-1/2)	1300/50 468 (500-1)			
CIRCLING	1360-1 518 (600-1)	1460-1 3/4 618 (700-1 3/4)	1660-2 3/4 818 (900-2 3/4)	1800-3 958 (1000-3)	

ELEV 842	D TDZE 832
----------	-------------------

045° to RWY04

HIRL all Rwws
REIL Rwy 17
TDZ/CL Rwws 12L, 12R, 30L, and 35

NC-1, 02 DEC 2021 to 30 DEC 2021

NC-1, 02 DEC 2021 to 30 DEC 2021

RNAV (GPS) RWY 4