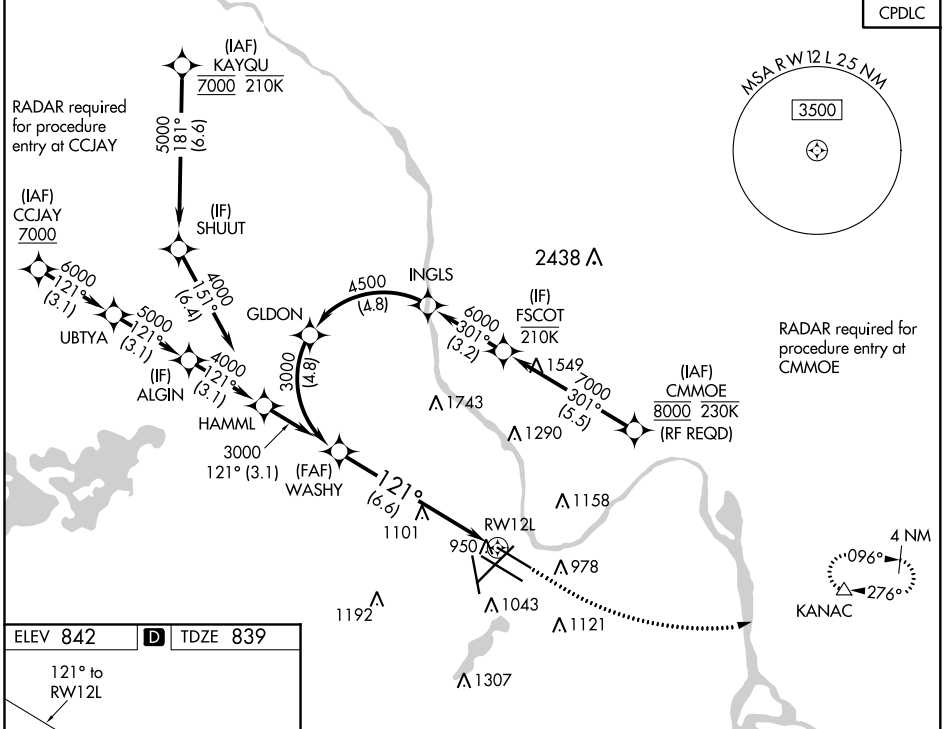


APP CRS	Rwy Idg	7620
121°	TDZE	839
	Apt Elev	842

RNAV (RNP) Y RWY 12L

MINNEAPOLIS-ST PAUL INTL/WOLD-CHAMBERLAIN (MSP)

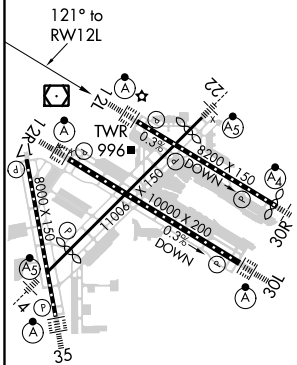
<p>▼ For uncompensated Baro-VNAV systems, procedure NA below -20°C (-4°F) or above 54°C (130°F). GPS required.</p>	<p>MINNEAPOLIS APP CON</p>		<p>MINNEAPOLIS TOWER</p>		<p>GND CON</p>		<p>CLNC DEL 133.2</p>	
	<p>D-ATIS ARR 135.35 239.275 DEP 120.8</p>	<p>118.725 335.65 (Rwy 35) 119.3 335.65 (12L-30R, 4-22, 17) 126.95 335.65 (12R-30L)</p>		<p>123.675 273.55 (17-35) 123.95 273.55 (1 2L-30R) 126.7 273.55 (12R-30L, 4-22)</p>		<p>N 121.8 348.6 S 121.9 348.6 W 127.925 348.6</p>		
	<p>ALSf-2</p> <p>MISSED APPROACH: Climb to 1300 then climbing left turn to 3000 direct KANAC and hold.</p>							



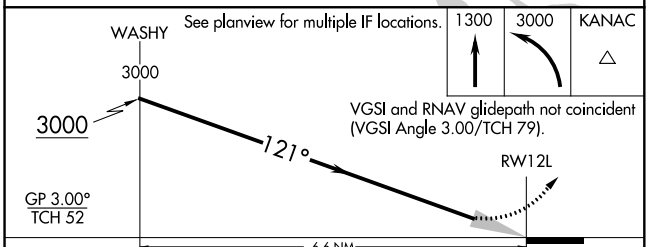
NC-1, 02 DEC 2021 to 30 DEC 2021

NC-1, 02 DEC 2021 to 30 DEC 2021

ELEV 842	D	TDZE 839
----------	----------	----------



HIRL all Rwys
REIL Rwy 17
TDZ/CL Rwys 12L, 12R, 30L, and 35



GP 3.00° TCH 52	6.6 NM			
CATEGORY	A	B	C	D
RNP 0.15 DA	1150/24 311 (400-½)			
RNP 0.30 DA	1241/45 402 (400-⅔)			

AUTHORIZATION REQUIRED