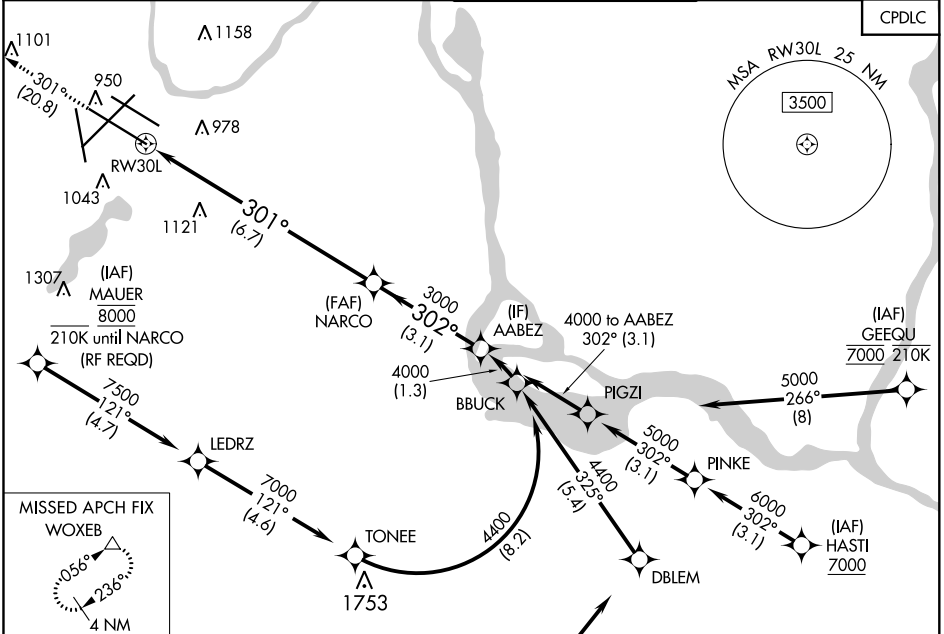


APP CRS 301°	Rwy Idg 10000 TDZE 823 Apt Elev 842
------------------------	--

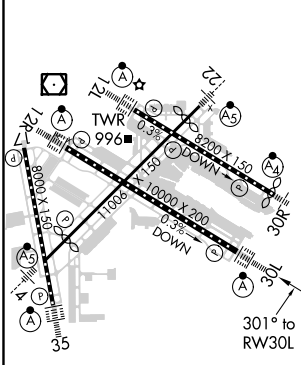
RNAV (RNP) Y RWY 30L

MINNEAPOLIS-ST PAUL INTL/WOLD-CHAMBERLAIN (MSP)

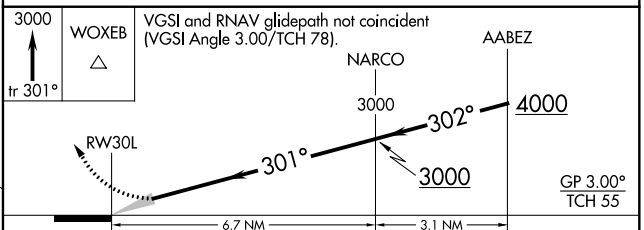
▽ For uncompensated Baro-VNAV systems, procedure NA below -19°C (-2°F) or above 54°C (130°F). GPS required. Simultaneous approaches authorized with Rwy 30R and ILS V RWY 35 (CONVERGING).	ALSIF-2	MISSED APPROACH: Climb to 3000 on track 301° to WOXEB and hold.		
	D-ATIS ARR 135.35 239.275 DEP 120.8	MINNEAPOLIS APP CON 118.725 335.65 (Rwy 35) 119.3 335.65 (12L-30R, 4-22, 17) 126.95 335.65 (12R-30L)	MINNEAPOLIS TOWER 123.675 273.55 (17-35) 123.95 273.55 (12L-30R) 126.7 273.55 (12R-30L, 4-22)	GND CON N 121.8 348.6 S 121.9 348.6 W 127.925 348.6



ELEV 842	D	TDZE 823
-----------------	----------	-----------------



HIRL all Rwys
REIL Rwy 17
TDZ/CL Rwys 12L, 12R, 30L, and 35



CATEGORY	A	B	C	D
RNP 0.30 DA	1150/30 327 (400-%)			

AUTHORIZATION REQUIRED

NC-1, 02 DEC 2021 to 30 DEC 2021

NC-1, 02 DEC 2021 to 30 DEC 2021