

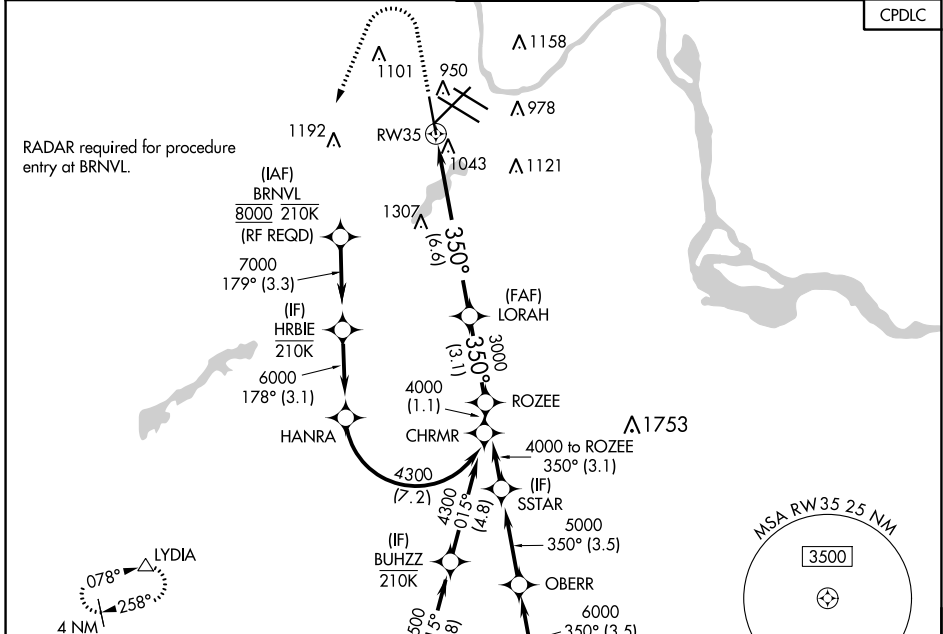
| | | |
|-------------|----------|-------------|
| APP CRS | Rwy Idg | 8000 |
| 350° | TDZE | 834 |
| | Apt Elev | 842 |

RNAV (RNP) Y RWY 35

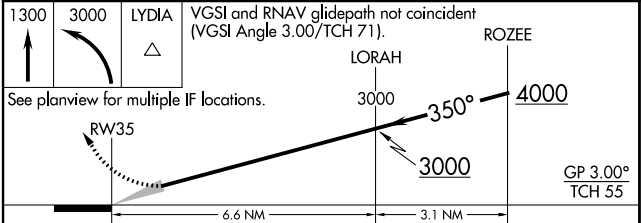
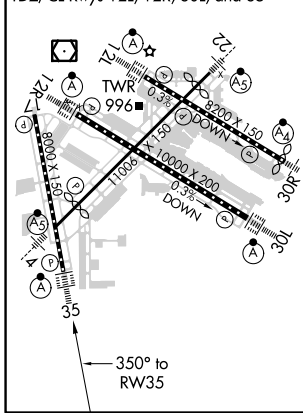
MINNEAPOLIS-ST PAUL INTL/WOLD-CHAMBERLAIN (MSP)

| | | |
|--|---------------|--|
| <p>▼ For uncompensated Baro-VNAV systems, procedure NA below -19°C (-2°F) or above 54°C (130°F). For inop ALSF, increase RNP 0.30 all Cats visibility to 1½ miles. GPS required.</p> | <p>ALSF-2</p> | <p>MISSED APPROACH: Climb to 1300 then climbing left turn to 3000 direct LYDIA and hold.</p> |
| | | |

| | | | | |
|--|---|--|--|-------------------------------------|
| <p>D-ATIS</p> <p>ARR 135.35 239.275</p> <p>DEP 120.8</p> | <p>MINNEAPOLIS APP CON</p> <p>118.725 335.65 (Rwy 35)</p> <p>119.3 335.65 (12L-30R, 4-22, 17)</p> <p>126.95 335.65 (12R-30L)</p> | <p>MINNEAPOLIS TOWER</p> <p>123.675 273.55 (17-35)</p> <p>123.95 273.55 (12L-30R)</p> <p>126.7 273.55 (12R-30L, 4-22)</p> | <p>GND CON</p> <p>N 121.8 348.6</p> <p>S 121.9 348.6</p> <p>W 127.925 348.6</p> | <p>CLNC DEL</p> <p>133.2</p> |
|--|---|--|--|-------------------------------------|



| | | |
|-----------------------------------|----------|-----------------|
| ELEV 842 | D | TDZE 834 |
| HIRL all Rwys | | |
| REIL Rwy 17 | | |
| TDZ/CL Rwys 12L, 12R, 30L, and 35 | | |



| CATEGORY | A | B | C | D |
|-------------|---|---------|--------------|---|
| RNP 0.11 DA | | 1213/40 | 379 (400-¾) | |
| RNP 0.16 DA | | 1291/60 | 457 (500-1¼) | |
| RNP 0.30 DA | | 1345-1¼ | 511 (600-1¼) | |

AUTHORIZATION REQUIRED

RNAV (RNP) Y RWY 35

NC-1, 02 DEC 2021 to 30 DEC 2021

NC-1, 02 DEC 2021 to 30 DEC 2021