

WAAS
CH **56225**
W30A

APP CRS
301°

Rwy Idg **10000**
TDZE **823**
Apt Elev **842**

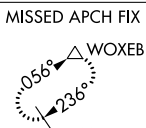
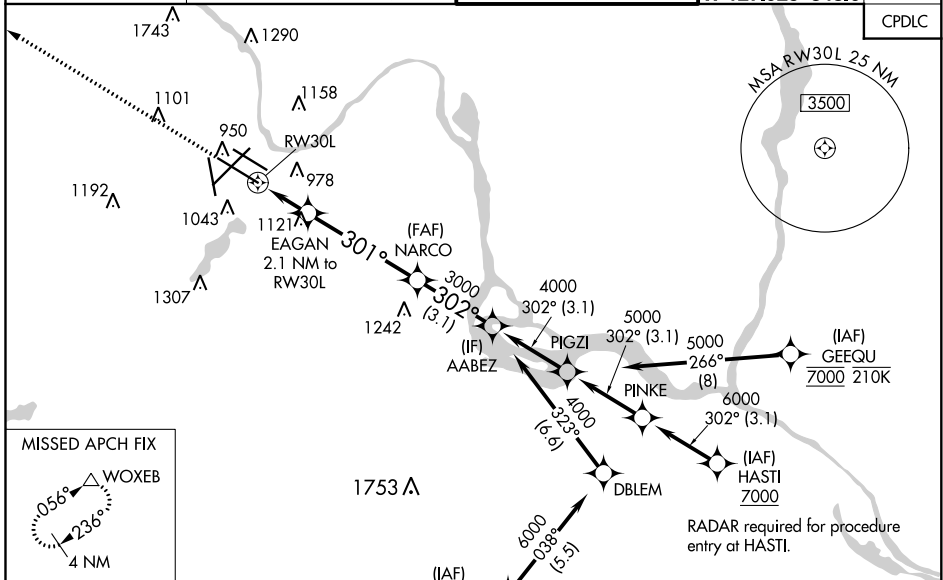
RNAV (GPS) Z RWY 30L

MINNEAPOLIS-ST PAUL INTL/WOLD-CHAMBERLAIN (MSP)

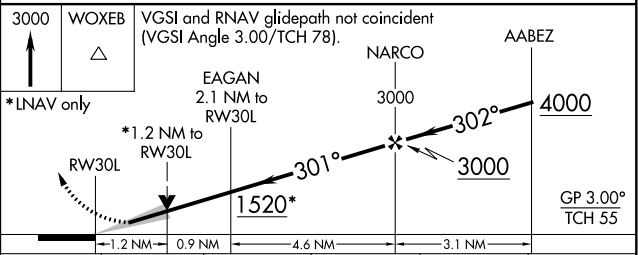
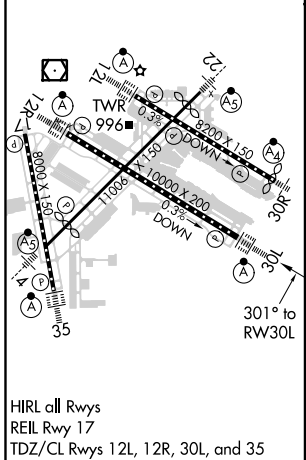
▼ For uncompensated Baro-VNAV systems, LNAV/VNAV NA below -19°C (-2°F) or above 54°C (130°F). DME/DME RNP-0.3 NA. Simultaneous approaches authorized with Rwy 30R and ILS V RWY 35 (CONVERGING). Use of FD or AP providing RNAV track guidance required during simultaneous operations. LNAV procedure NA during simultaneous operations. For inop ALS, increase LPV Cat E visibility to RVR 4000, increase LNAV/VNAV Cat E visibility to RVR 5000, and LNAV Cat E visibility to 1/2 SM.

ALSF-2 MISSED APPROACH: Climb to 3000 direct WOXEB and hold.

D-ATIS ARR 135.35 239.275 DEP 120.8	MINNEAPOLIS APP CON 118.725 335.65 (Rwy 35) 119.3 335.65 (12L-30R, 4-22, 17) 126.95 335.65 (12R-30L)	MINNEAPOLIS TOWER 123.675 273.55 (17-35) 123.95 273.55 (12L-30R) 126.7 273.55 (12R-30L, 4-22)	GND CON N 121.8 348.6 S 121.9 348.6 W 127.925 348.6	CLNC DEL 133.2
--	--	---	---	--------------------------



ELEV 842 **D** TDZE 823



CATEGORY	A	B	C	D	E
LPV DA		1023/18	200 (200-1/2)		
LNAV/VNAV DA		1130/24	307 (300-1/2)		
LNAV MDA	1280/24	457 (500-1/2)	1280/45	457 (500-7/8)	
CIRCLING	1360-1	518 (600-1)	1460-1 3/4 618 (700-1 3/4)	1660-2 3/4 818 (900-2 3/4)	1800-3 958 (1000-3)