

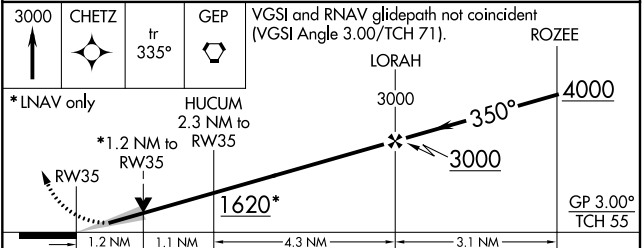
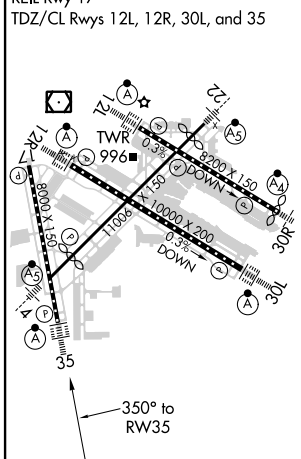
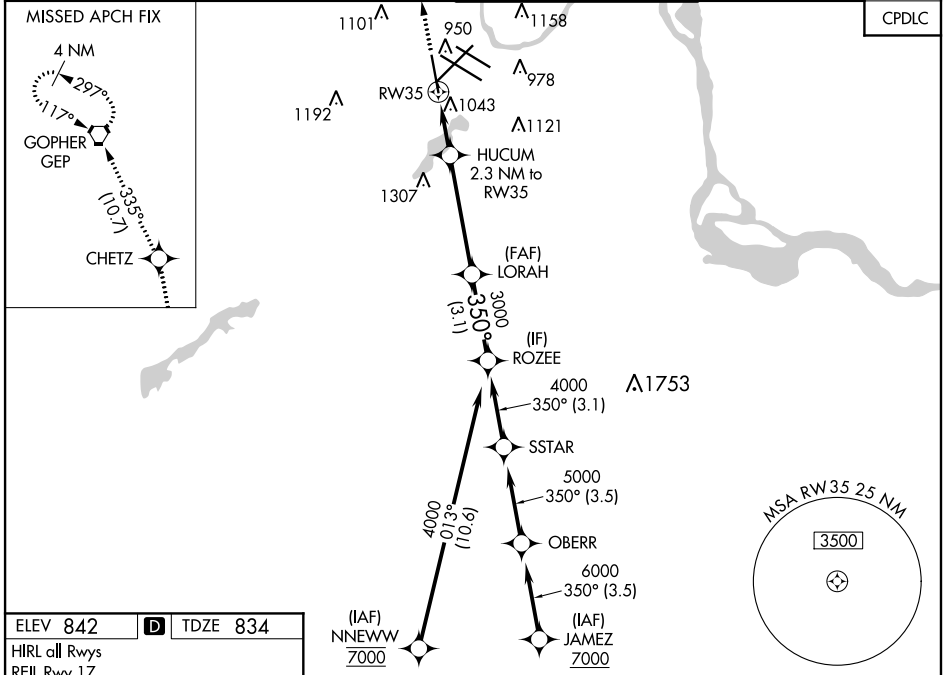
| | | |
|--|------------------------|---|
| WAAS CH 90128 W35A | APP CRS 350° | Rwy Idg TDZE 834 Apt Elev 842 |
|--|------------------------|---|

RNAV (GPS) Z RWY 35

MINNEAPOLIS-ST PAUL INTL/WOLD-CHAMBERLAIN (MSP)

| | | |
|---|----------------|--|
| <p>⚠ For uncompensated Baro-VNAV systems, LNAV/VNAV NA below -19°C (-2°F) or above 54°C (130°F). DME/DME RNP-0.3 NA. For inop ALS, increase LPV Cat E visibility to RVR 4000, LNAV/VNAV Cat E visibility to 1¼ SM and LNAV Cats C/D/E visibility to 1½ SM.</p> | <p>ALSIF-2</p> | <p>MISSED APPROACH: Climb to 3000 direct CHETZ and on track 335° to GEP VORTAC and hold.</p> |
|---|----------------|--|

| | | | | |
|---|--|---|---|--------------------------|
| D-ATIS ARR 135.35 239.275 DEP 120.8 | MINNEAPOLIS APP CON 118.725 335.65 (Rwy 35) 119.3 335.65 (12L-30R, 4-22, 17) 126.95 335.65 (12R-30L) | MINNEAPOLIS TOWER 123.675 273.55 (17-35) 123.95 273.55 (12L-30R) 126.7 273.55 (12R-30L, 4-22) | GND CON N 121.8 348.6 S 121.9 348.6 W 127.925 348.6 | CLNC DEL 133.2 |
|---|--|---|---|--------------------------|



| CATEGORY | A | B | C | D | E |
|-------------------|---------------------|---|-------------------------|-------------------------|------------------------|
| LPV DA | 1034/18 200 (200-½) | | | | |
| LNAV/VNAV DA | 1204/40 370 (400-¾) | | | | |
| LNAV MDA | 1300/24 466 (500-½) | | 1300/50 466 (500-1) | | |
| C CIRCLING | 1360-1 518 (600-1) | | 1460-1¾ 618 (700-1¾) | 1660-2¾ 818 (900-2¾) | 1800-3 958 (1000-3) |