

LOC I-MGM	APP CRS	Rwy Idg	9020
109.9	097°	TDZE	219
		Apt Elev	221

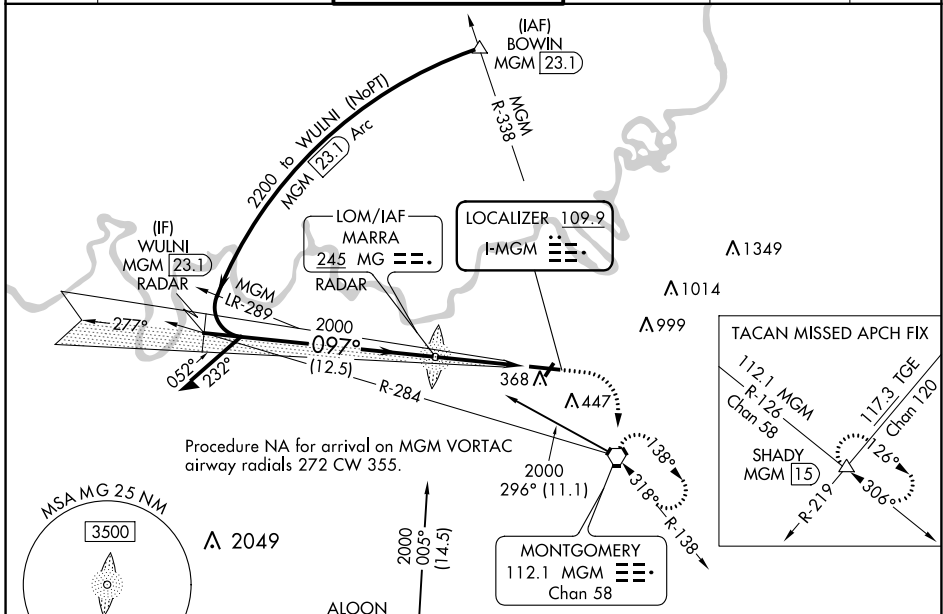
ILS or LOC RWY 10

MONTGOMERY RGNL (DANNELLY FLD) (MGM)

⚠ Circling for Cat E NA north of Rwy 10-28. For inop ALS, increase S-ILS 10 Cat E visibility to RVR 4000, and increase S-LOC 10 Cat E visibility to 1 $\frac{1}{2}$ SM.
ASR ** RVR 1800 authorized with the use of FD or AP or HUD to DA.

MALSR MISSED APPROACH: Climb to 700 then climbing right turn to 3000 direct MGM VORTAC and hold, continue climb-in-hold to 3000 (TACAN aircraft continue 3500 on MGM VORTAC R-126 to SHADY INT/MGM 15 DME and hold SE, RT, 306° inbound).

ATIS	MONTGOMERY APP CON *	DANNELLY TOWER *	GND CON	CLNC DEL	UNICOM
120.675	124.0 363.025	119.7 (CTAF) 360.85	121.7 348.6	118.3 270.3	122.95

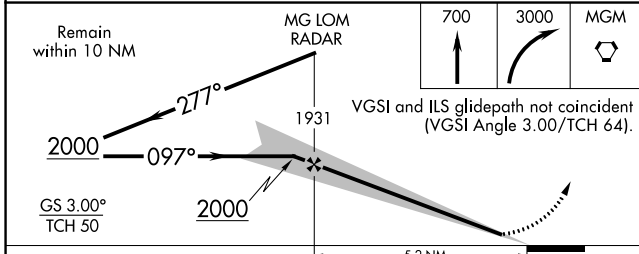


SE-4, 02 DEC 2021 to 30 DEC 2021

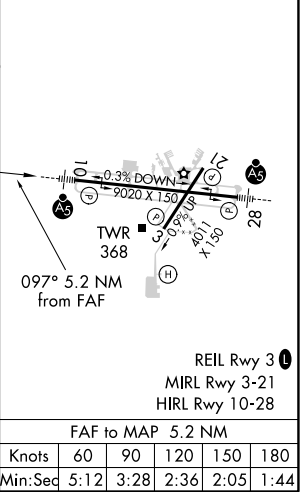
SE-4, 02 DEC 2021 to 30 DEC 2021

Procedure NA for arrival on MGM VORTAC airway radials 272 CW 355.

ADF or DME or RADAR REQUIRED



ELEV	221	TDZE	219
------	-----	------	-----



CATEGORY	A	B	C	D	E
S-ILS 10**	419/24 200 (200- $\frac{1}{2}$)				
S-LOC 10	660/24	441 (500- $\frac{1}{2}$)	660/45	441 (500- $\frac{3}{4}$)	
C CIRCLING	700-1	479 (500-1)	800-1 $\frac{1}{2}$ 579 (600-1 $\frac{1}{2}$)	860-2 639 (700-2)	860-2 $\frac{1}{4}$ 639 (700-2 $\frac{1}{4}$)

FAF to MAP 5.2 NM					
Knots	60	90	120	150	180
Min:Sec	5:12	3:28	2:36	2:05	1:44

ILS or LOC RWY 10