

WAAS CH 56200 W28A	APP CRS 277°	Rwy Idg TDZE Apt Elev	9020 197 221
--	------------------------	-----------------------------	---

RNAV (GPS) RWY 28

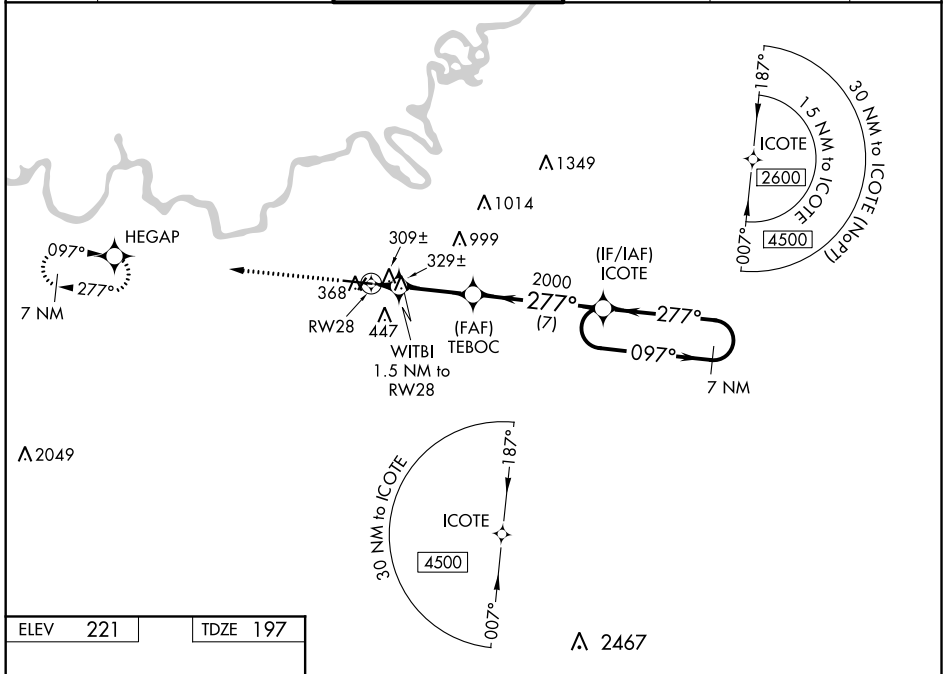
MONTGOMERY RGNL (DANNELLY FLD) (MGM)

⚠ For uncompensated Baro-VNAV systems, LNAV/VNAV NA below -8°C (18°F) or above 54°C (130°F). DME/DME RNP-0.3 NA. For inop MALSR, increase LPV Cat E visibility to ¾ mile; increase LNAV/VNAV Cat E visibility to 1⅓ mile; increase LNAV Cat E visibility to 1⅓ mile. Circling for Cat E NA north of Rwy 10-28.

MALSR

MISSED APPROACH:
Climb to 3100 direct HEGAP and hold.

ATIS 120.675	MONTGOMERY APP CON * 124.0 363.025	DANNELLY TOWER * 119.7 (CTAF) 0 360.85	GND CON 121.7 348.6	CLNC DEL 118.3 270.3	UNICOM 122.95
------------------------	--	--	-------------------------------	--------------------------------	-------------------------



ELEV 221	TDZE 197
----------	----------

REIL Rwy 3
MIRL Rwy 3-21
HIRL Rwy 10-28

3100	HEGAP	VGSI and RNAV glidepath not coincident (VGSI Angle 3.00/TCH 75).	7 NM Holding Pattern		
* LNAV only	WITBI 1.5 NM to RW28	TEBOC 2000	ICOTE 2600		
	* 1 NM to RW28	720*	2000		
	1 NM	0.5	4 NM	7 NM	
GP 3.00° TCH 56					
CATEGORY	A	B	C	D	E
LPV DA		397-½	200 (200-½)		
LNAV/VNAV DA		606-⅞	409 (400-⅞)		
LNAV MDA	580-½	383 (400-½)	580-⅝	383 (400-⅝)	
C CIRCLING	700-1	479 (500-1)	800-1½ 579 (600-1½)	860-2 639 (700-2)	860-2¼ 639 (700-2¼)

RNAV (GPS) RWY 28

SE-4, 02 DEC 2021 to 30 DEC 2021

SE-4, 02 DEC 2021 to 30 DEC 2021