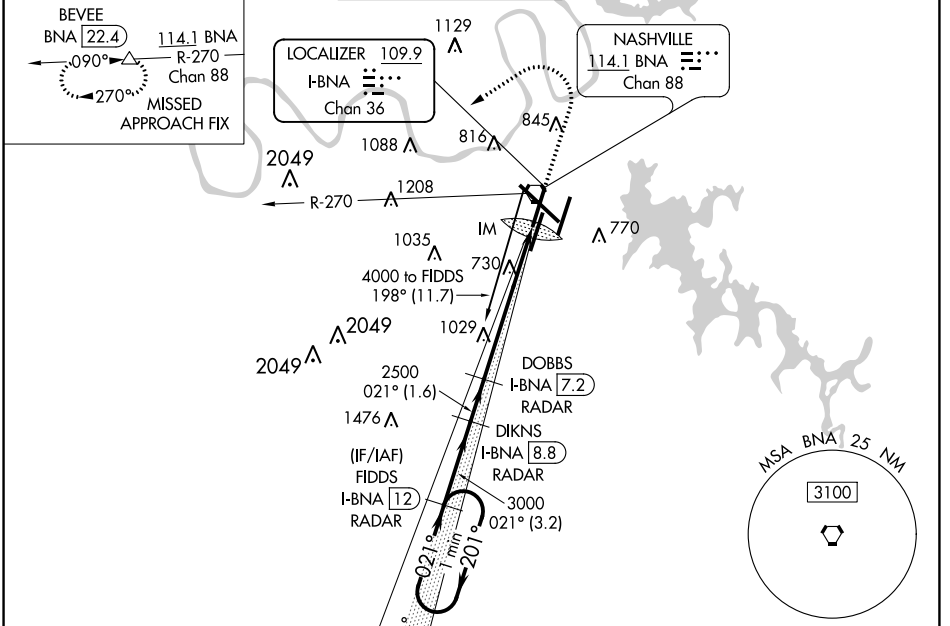


LOC/DME I-BNA 109.9 Chan 36	APP CRS 021°	Rwy ldg TDZE Apt Elev 7702 599 599
--	------------------------	--

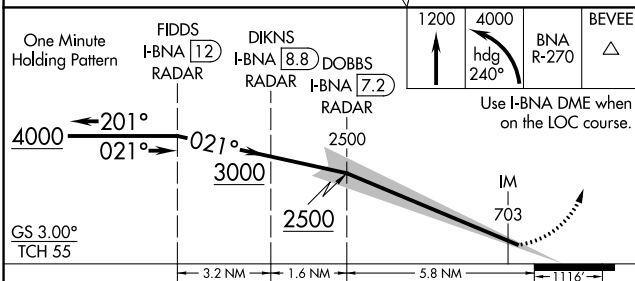
ILS RWY 2L (CAT II & III)

NASHVILLE INTL (BNA)

<p>Simultaneous approach authorized with Rwy 2R. DME or radar required. Cat II: RVR 1000 authorized with specific OPSPEC, MSPEC, or LOA approval and use of Autoland or HUD to touchdown.</p>	ALSF-2	MISSED APPROACH: Climb to 1200 then climbing left turn to 4000 on heading 240° and on BNA VORTAC R-270 to BEVEE/BNA 22.4 DME and hold.			
	D-ATIS 135.1	NASHVILLE APP CON 118.4 360.7	NASHVILLE TOWER 118.6 257.8	GND CON 121.9 348.6	CLNC DEL 126.05



DME or RADAR REQUIRED



CATEGORY	A	B	C	D
S-ILS 2L	CAT II RA 104/12 100 DA 699			
S-ILS 2L	CAT III RVR 600			

CATEGORY II & III ILS - SPECIAL AIRCREW & AIRCRAFT CERTIFICATION REQUIRED

ELEV 599 TDZE 599

Terminal area diagram showing taxiways (A, B, C, D, E, F, G, H, I, J, K, L, M, N, O, P, Q, R, S, T, U, V, W, X, Y, Z), runways (2L, 2R), and tower (TWR 762). Altitudes and distances are indicated for various points.

HIRL all Rwws
TDZ/CL Rwws 2L and 2R
REIL Rwws 13, 20C, and 31

SE-1, 02 DEC 2021 to 30 DEC 2021

SE-1, 02 DEC 2021 to 30 DEC 2021